



MLS 7059046 Residential

\$739,900

3,339 sq ft
5 bedrooms
4 baths

5044 Mary Allen Lane
Brainerd MN 56401

Status: Active

Description:

Experience serene privacy in this ****custom-built 3,300+ sq ft retreat**** on nearly three wooded acres between Baxter and Nisswa. Tucked away on a quiet cul-de-sac, this home features a main-level owner's suite and a kitchen with a granite island, stainless appliances, and a pantry. Relax by two fireplaces or entertain in the walkout lower level with its custom wet bar. With ****5 bedrooms, 4 baths, and a 3-car garage****, it's a wildlife lover's dream with room for everyone.

Additional Details:

| | |
|------------------------|-----------------|
| Year Built | 2009 |
| Lot Acres | 2.89 |
| Lot Dimensions | 420x454x149x420 |
| Garage Stalls | 3 |
| School District | 181 |
| Taxes | \$3,151 |
| Taxes with Assessments | \$3,176 |
| Tax Year | 2026 |

Additional Features:

Basement: Finished, Full, Walkout **Fuel:** Array **Garage:** 3 **Heat:** Forced Air **Sewer:** Private Sewer, Septic System Compliant - Yes **Water:** Well
Air Conditioning: Central Air

Driving Directions:

N on MN 371, left onto Gull Dam Rd, left onto Lake Allen Dr, right to 5044 Mary Allen



Listed By:
Positive Realty

Affinity Real Estate Inc. participates in the Regional Multiple Listing Service of Minnesota, Inc Broker Reciprocity (sm) program, allowing us to display other broker's listings on our website. All properties are subject to prior sale, change or withdrawal.



Call Affinity Real Estate

218-237-3333

info@affinityrealestate.com



Affinity Real Estate - 600 Park Avenue South - Park Rapids MN 56470



website: www.AffinityRealEstate.com | email: info@affinityrealestate.com | office: 218-237-3333 | fax: 218-237-3377

Affinity
REAL ESTATE INC

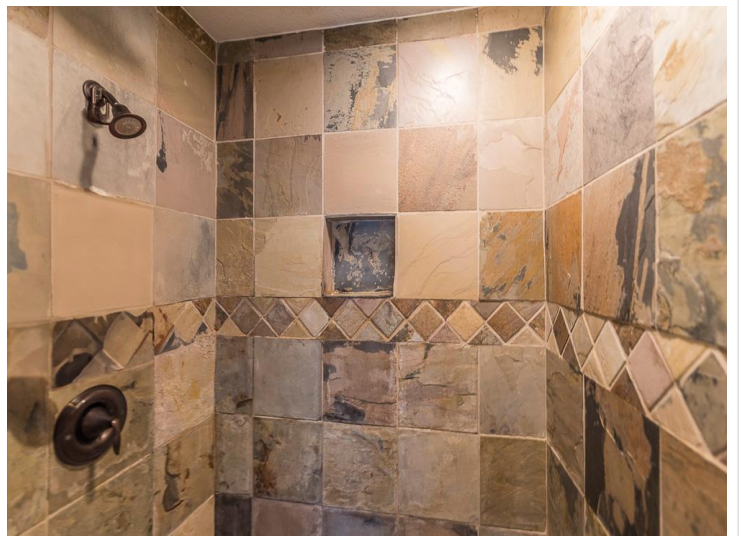
\$739,900
MLS 7059046 Residential
5044 Mary Allen Lane
Brainerd MN 56401



website: www.AffinityRealEstate.com | email: info@affinityrealestate.com | office: 218-237-3333 | fax: 218-237-3377

Affinity
REAL ESTATE INC

\$739,900
MLS 7059046 Residential
5044 Mary Allen Lane
Brainerd MN 56401



website: www.AffinityRealEstate.com | email: info@affinityrealestate.com | office: 218-237-3333 | fax:218-237-3377

Affinity
REAL ESTATE INC

\$739,900
MLS 7059046 Residential
5044 Mary Allen Lane
Brainerd MN 56401



website: www.AffinityRealEstate.com | email: info@affinityrealestate.com | office: 218-237-3333 | fax: 218-237-3377

Affinity
REAL ESTATE INC

\$739,900
MLS 7059046 Residential
5044 Mary Allen Lane
Brainerd MN 56401



website: www.AffinityRealEstate.com | email: info@affinityrealestate.com | office: 218-237-3333 | fax:218-237-3377



\$739,900
MLS 7059046 Residential
5044 Mary Allen Lane
Brainerd MN 56401



website: www.AffinityRealEstate.com | email: info@affinityrealestate.com | office: 218-237-3333 | fax:218-237-3377

Affinity
REAL ESTATE INC

\$739,900
MLS 7059046 Residential
5044 Mary Allen Lane
Brainerd MN 56401



website: www.AffinityRealEstate.com | email: info@affinityrealestate.com | office: 218-237-3333 | fax:218-237-3377



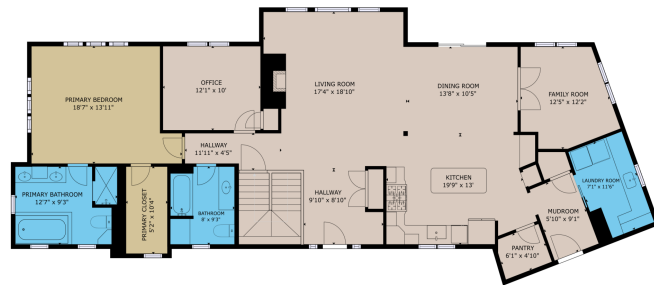
\$739,900
MLS 7059046 Residential
5044 Mary Allen Lane
Brainerd MN 56401



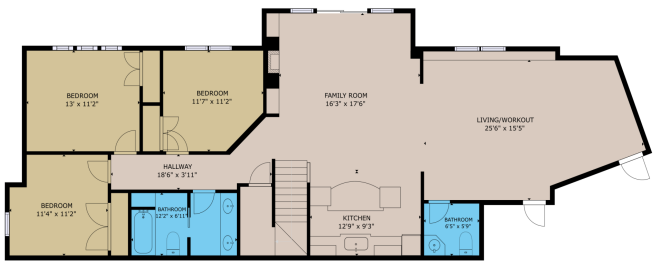
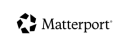
website: www.AffinityRealEstate.com | email: info@affinityrealestate.com | office: 218-237-3333 | fax: 218-237-3377

Affinity
REAL ESTATE INC

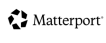
\$739,900
MLS 7059046 Residential
5044 Mary Allen Lane
Brainerd MN 56401



FLOOR 1
GRID SYSTEM AREA:
 ROOM 1: 180' x 9' FLOOR 2: 187' x 9'
 TOTAL: 357' x 9'
 SIZES AND DIMENSIONS ARE APPROXIMATE. ACTUAL MAY VARY.



FLOOR 2
GRID SYSTEM AREA:
 ROOM 1: 180' x 9' FLOOR 2: 187' x 9'
 TOTAL: 357' x 9'
 SIZES AND DIMENSIONS ARE APPROXIMATE. ACTUAL MAY VARY.



website: www.AffinityRealEstate.com | email: info@affinityrealestate.com | office: 218-237-3333 | fax: 218-237-3377



\$739,900
 MLS 7059046 Residential
 5044 Mary Allen Lane
 Brainerd MN 56401