



MLS 7059122 Residential

\$39,500

0 sq ft
0 bedrooms
0 baths

5630 Bemidji Avenue
Bemidji MN 56601

Status: Active



Description:

Location Location Location. This beautiful wooded 1 acre property north of Bemidji and near Lake Bemidji boat launch is ready for a new story! There is an abandoned home and could be a fixer upper, handyman special or tear down, either way this property is being sold "as is" and would not qualify for financing. Take advantage of opportunities when they arrive.

Additional Details:

Year Built	1938
Lot Acres	0.97
Lot Dimensions	148x290
School District	31
Taxes	\$448
Taxes with Assessments	\$448
Tax Year	2026

Additional Features:

Basement: Other **Fuel:** Array **Heat:** None **Sewer:** None **Water:** None **Air Conditioning:** None

Driving Directions:

North on Bemidji Ave, property on right 5630



Listed By:
RE/MAX Results - Nisswa

Affinity Real Estate Inc. participates in the Regional Multiple Listing Service of Minnesota, Inc Broker Reciprocity (sm) program, allowing us to display other broker's listings on our website. All properties are subject to prior sale, change or withdrawal.



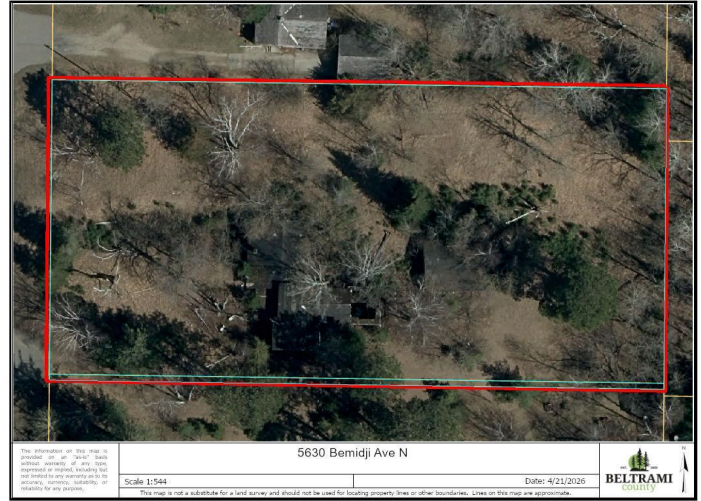
Call Affinity Real Estate

218-237-3333

info@affinityrealestate.com



Affinity Real Estate - 600 Park Avenue South - Park Rapids MN 56470



website: www.AffinityRealEstate.com | email: info@affinityrealestate.com | office: 218-237-3333 | fax: 218-237-3377

Affinity
REAL ESTATE INC

\$39,500
MLS 7059122 Residential
5630 Bemidji Avenue
Bemidji MN 56601