



MLS 7059285 Land

**\$68,500**

1.2 Acres  
Raw Land

TBD Fawn Lake Road  
Merrifield MN 56465

Status: Active

**Description:**

Transform these lots into versatile storage facilities for your lake toys, car collection, or other valuable items, or consider it for your residential home. Situated on level-to-gradual rolling sites, these wooded lots are conveniently located near the south shore of Cross Lake. Enjoy additional privacy and safety with a no-cut zone and no-hunting covenant on the property. Benefit from easy access to the nearby city of Crosslake, Mission Township, and Breezy Point, along with recreational attractions such as the Whitefish Chain, Ossie Chain, Pelican Lake and Horseshoe Lake. This tract is situated in Mission Township, and there will not be a restriction on building a residential, storage, or commercial building.

**Additional Details:**

Lot Acres	1.2
Lot Dimensions	195 x 250
School District	186
Taxes	\$378
Taxes with Assessments	\$366
Tax Year	2026

**Additional Features:**

**Driving Directions:**

From the intersection of County Road 3 and County Road 66 in Crosslake, take County Road 3 South. Go 2.9 miles, turn right onto Fawn Lake Rd. Go 0.2 miles, and The property will be on the left side of the road.



Listed By:  
Larson Group Real Estate/Kelle

Affinity Real Estate Inc. participates in the Regional Multiple Listing Service of Minnesota, Inc Broker Reciprocity (sm) program, allowing us to display other broker's listings on our website. All properties are subject to prior sale, change or withdrawal.



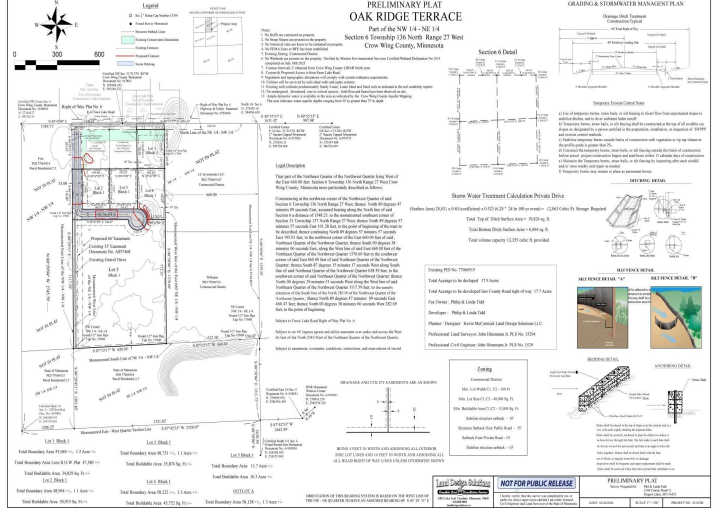
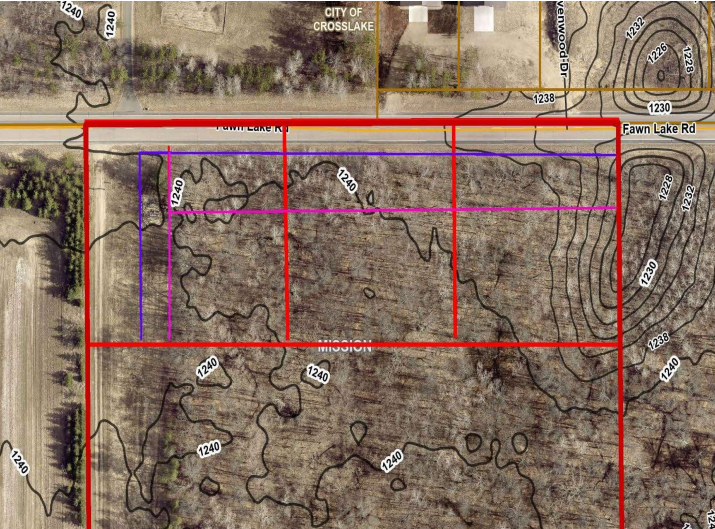
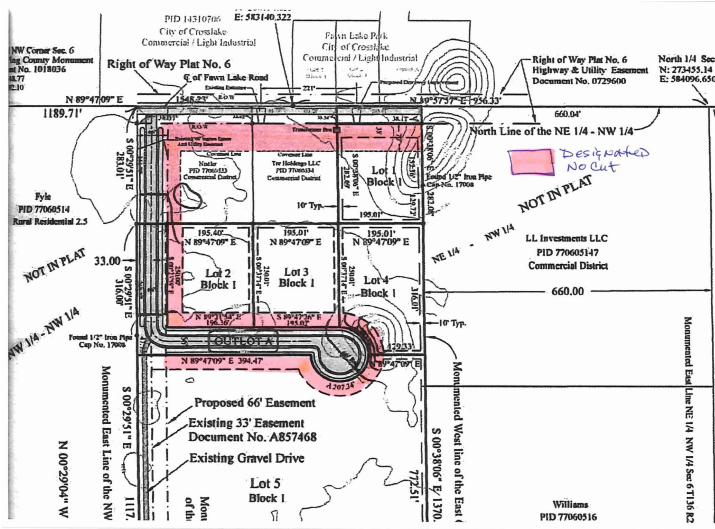
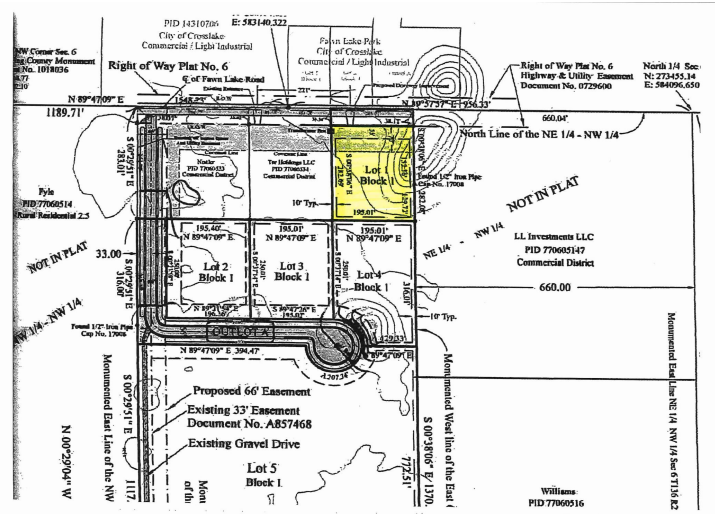
**Call Affinity Real Estate**

**218-237-3333**

**info@affinityrealestate.com**



**Affinity Real Estate - 600 Park Avenue South - Park Rapids MN 56470**



website: [www.AffinityRealEstate.com](http://www.AffinityRealEstate.com) | email: [info@affinityrealestate.com](mailto:info@affinityrealestate.com) | office: 218-237-3333 | fax: 218-237-3377



**\$68,500**  
 MLS 7059285 Land  
 TBD Fawn Lake Road  
 Merrifield MN 56465