



MLS 7059333 Residential

\$529,000

2,521 sq ft
3 bedrooms
3 baths

19648 County Highway 57
Vining MN 56588

Status: Coming Soon

Description:

Come check out the setting for this Storybook home located on 40 acres of beautiful rolling hills. This 3 bedroom 3 bath home offers many updates including a very large ensuite with walk-in closets, large shower and whirlpool tub. You can walk right onto the massive deck from the bedroom or house. The home has kept its turn of the century character while still modernizing. The 4 stall (5 cars) detached garage offers infloor heat for the cold Minnesota winters. This is a must see home to appreciate.

Additional Details:

Year Built	1890
Lot Acres	40
Lot Dimensions	40 ac
Garage Stalls	4
School District	545
Taxes	\$2,152
Taxes with Assessments	\$2,152
Tax Year	2025

Additional Features:

Basement: Block, Partial **Fuel:** Array **Garage:** 4 **Heat:** Baseboard **Sewer:** Private Sewer **Water:** Drilled **Air Conditioning:** Wall Unit(s)

Driving Directions:

From Vining go 1 mile west on Hwy 210 to Cty 57. Drive south on 57 about 1 mile. Property is on the East side of the road.



Listed By:
Weichert, Realtors - Paulson Land Co

Affinity Real Estate Inc. participates in the Regional Multiple Listing Service of Minnesota, Inc Broker Reciprocity (sm) program, allowing us to display other broker's listings on our website. All properties are subject to prior sale, change or withdrawal.



Call Affinity Real Estate

218-237-3333

info@affinityrealestate.com



Affinity Real Estate - 600 Park Avenue South - Park Rapids MN 56470



website: www.AffinityRealEstate.com | email: info@affinityrealestate.com | office: 218-237-3333 | fax:218-237-3377

Affinity
REAL ESTATE INC

\$529,000
MLS 7059333 Residential
19648 County Highway 57
Vining MN 56588



website: www.AffinityRealEstate.com | email: info@affinityrealestate.com | office: 218-237-3333 | fax:218-237-3377

Affinity
REAL ESTATE INC

\$529,000
MLS 7059333 Residential
19648 County Highway 57
Vining MN 56588



website: www.AffinityRealEstate.com | email: info@affinityrealestate.com | office: 218-237-3333 | fax:218-237-3377

Affinity
REAL ESTATE INC

\$529,000
MLS 7059333 Residential
19648 County Highway 57
Vining MN 56588



website: www.AffinityRealEstate.com | email: info@affinityrealestate.com | office: 218-237-3333 | fax:218-237-3377



\$529,000
MLS 7059333 Residential
19648 County Highway 57
Vining MN 56588



website: www.AffinityRealEstate.com | email: info@affinityrealestate.com | office: 218-237-3333 | fax:218-237-3377



\$529,000
MLS 7059333 Residential
19648 County Highway 57
Vining MN 56588



website: www.AffinityRealEstate.com | email: info@affinityrealestate.com | office: 218-237-3333 | fax: 218-237-3377

Affinity
REAL ESTATE INC

\$529,000
MLS 7059333 Residential
19648 County Highway 57
Vining MN 56588



website: www.AffinityRealEstate.com | email: info@affinityrealestate.com | office: 218-237-3333 | fax:218-237-3377



\$529,000
MLS 7059333 Residential
19648 County Highway 57
Vining MN 56588



website: www.AffinityRealEstate.com | email: info@affinityrealestate.com | office: 218-237-3333 | fax:218-237-3377

Affinity
REAL ESTATE INC

\$529,000
MLS 7059333 Residential
19648 County Highway 57
Vining MN 56588



website: www.AffinityRealEstate.com | email: info@affinityrealestate.com | office: 218-237-3333 | fax:218-237-3377

Affinity
REAL ESTATE INC

\$529,000
MLS 7059333 Residential
19648 County Highway 57
Vining MN 56588



website: www.AffinityRealEstate.com | email: info@affinityrealestate.com | office: 218-237-3333 | fax:218-237-3377



\$529,000
MLS 7059333 Residential
19648 County Highway 57
Vining MN 56588



website: www.AffinityRealEstate.com | email: info@affinityrealestate.com | office: 218-237-3333 | fax:218-237-3377

Affinity
REAL ESTATE INC

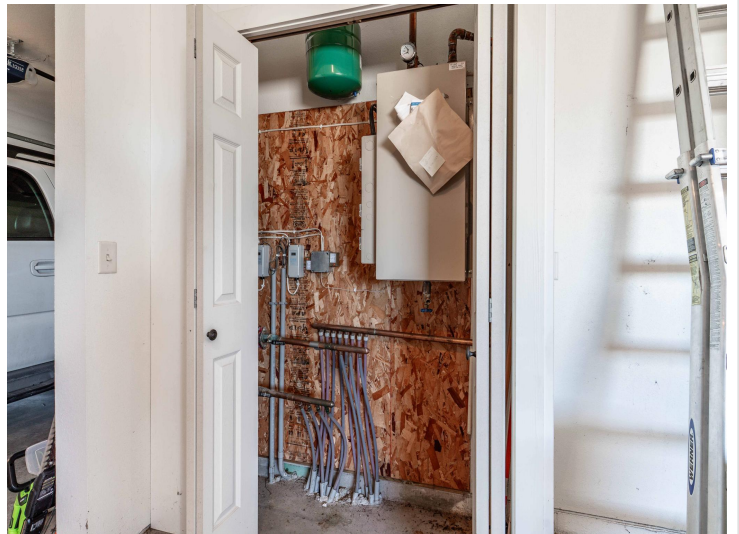
\$529,000
MLS 7059333 Residential
19648 County Highway 57
Vining MN 56588



website: www.AffinityRealEstate.com | email: info@affinityrealestate.com | office: 218-237-3333 | fax:218-237-3377

Affinity
REAL ESTATE INC

\$529,000
MLS 7059333 Residential
19648 County Highway 57
Vining MN 56588



website: www.AffinityRealEstate.com | email: info@affinityrealestate.com | office: 218-237-3333 | fax:218-237-3377

Affinity
REAL ESTATE INC

\$529,000
MLS 7059333 Residential
19648 County Highway 57
Vining MN 56588



website: www.AffinityRealEstate.com | email: info@affinityrealestate.com | office: 218-237-3333 | fax:218-237-3377



\$529,000
MLS 7059333 Residential
19648 County Highway 57
Vining MN 56588



website: www.AffinityRealEstate.com | email: info@affinityrealestate.com | office: 218-237-3333 | fax: 218-237-3377

Affinity
REAL ESTATE INC

\$529,000
MLS 7059333 Residential
19648 County Highway 57
Vining MN 56588