



MLS 7059563 Land

\$189,900

2.67 Acres
Raw Land

TBD Tract A Swanson Road
Deerwood MN 56444

Status: Active

Description:

Rare lakefront opportunity on Ann Lake — a pristine, natural environment lake prized for its seclusion, clear water, and excellent fishing. This 2.67-acre parcel offers an impressive 676 feet of shoreline, lake depths reaching 46 feet, and high, buildable ground set among a heavily wooded, gently rolling landscape. Whether you're planning a year-round home or a seasonal getaway, this exceptional lot provides the ideal setting to build exactly what you've been envisioning. Utilities are available, and the location puts you just minutes from Deerwood and Crosby. Properties like this rarely come available — don't let this one pass you by. More acreage available. See MLS # 7059587

Additional Details:

Lot Acres	2.67
Lot Dimensions	676x310x289
School District	182
Taxes	\$532
Taxes with Assessments	\$532
Tax Year	2025

Additional Features:

Driving Directions:

From 4 Way stop in Crosby go East on HWY 6 to 3 Way stop in Deerwood, Go East on Great River Road to Right on HWY 6 Going South. Left on Swanson Road to Left to sign on Left.



Listed By:
Coldwell Banker Crown Realtors

Affinity Real Estate Inc. participates in the Regional Multiple Listing Service of Minnesota, Inc Broker Reciprocity (sm) program, allowing us to display other broker's listings on our website. All properties are subject to prior sale, change or withdrawal.



Call Affinity Real Estate

218-237-3333

info@affinityrealestate.com



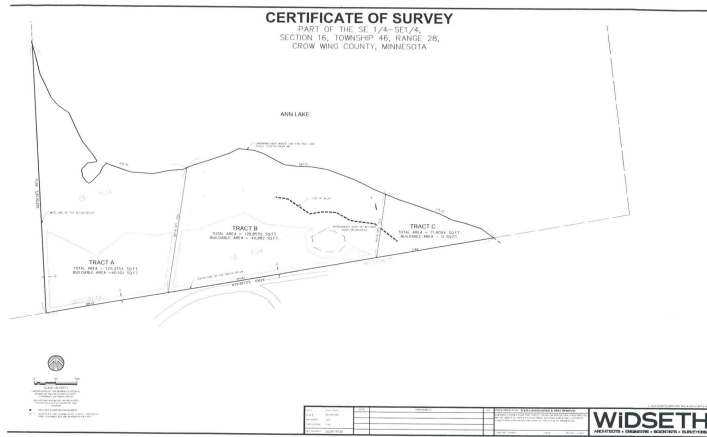
Affinity Real Estate - 600 Park Avenue South - Park Rapids MN 56470



website: www.AffinityRealEstate.com | email: info@affinityrealestate.com | office: 218-237-3333 | fax:218-237-3377



\$189,900
MLS 7059563 Land
TBD Tract A Swanson Road
Deerwood MN 56444



website: www.AffinityRealEstate.com | email: info@affinityrealestate.com | office: 218-237-3333 | fax:218-237-3377



\$189,900
 MLS 7059563 Land
 TBD Tract A Swanson Road
 Deerwood MN 56444