



MLS 7059590 Residential

\$296,800

2,160 sq ft
3 bedrooms
3 baths

1028 Woodward Drive
Bemidji MN 56601

Status: Active

Description:

Country living but close to town, need privacy? Well, search no more! Charming 3 bedroom 3 bath home perfectly situated on the hilltop with some great views. You'll find an open floor plan on main floor with good sized rooms and a formal office area that could also be used as a 4th bedroom. There is a large deck off the kitchen living area, perfect for year-round grilling & entertaining as it also steps off into the yard. In the lower level there is storage space and a room perfect for fitness or family room. Seller is motivated so do not miss out on this beautiful solid, well-built home.

Additional Details:

Year Built	1999
Lot Acres	1.27
Lot Dimensions	154x350
Garage Stalls	2
School District	31
Taxes	\$2,554
Taxes with Assessments	\$2,554
Tax Year	2026

Additional Features:

Fuel: Array **Heat:** Forced Air

Driving Directions:

From Bemidji, Washington Ave S to Cty 11 (Carr Lake Rd SW) and go right (west) and take a left on Monroe Ave, then right on Woodward, follow through to the end (left side)



Listed By:
RE/MAX Results - Nisswa

Affinity Real Estate Inc. participates in the Regional Multiple Listing Service of Minnesota, Inc Broker Reciprocity (sm) program, allowing us to display other broker's listings on our website. All properties are subject to prior sale, change or withdrawal.



Call Affinity Real Estate

218-237-3333

info@affinityrealestate.com



Affinity Real Estate - 600 Park Avenue South - Park Rapids MN 56470



website: www.AffinityRealEstate.com | email: info@affinityrealestate.com | office: 218-237-3333 | fax: 218-237-3377

Affinity
REAL ESTATE INC

\$296,800
MLS 7059590 Residential
1028 Woodward Drive
Bemidji MN 56601



website: www.AffinityRealEstate.com | email: info@affinityrealestate.com | office: 218-237-3333 | fax:218-237-3377

Affinity
REAL ESTATE INC

\$296,800
MLS 7059590 Residential
1028 Woodward Drive
Bemidji MN 56601



website: www.AffinityRealEstate.com | email: info@affinityrealestate.com | office: 218-237-3333 | fax: 218-237-3377

Affinity
REAL ESTATE INC

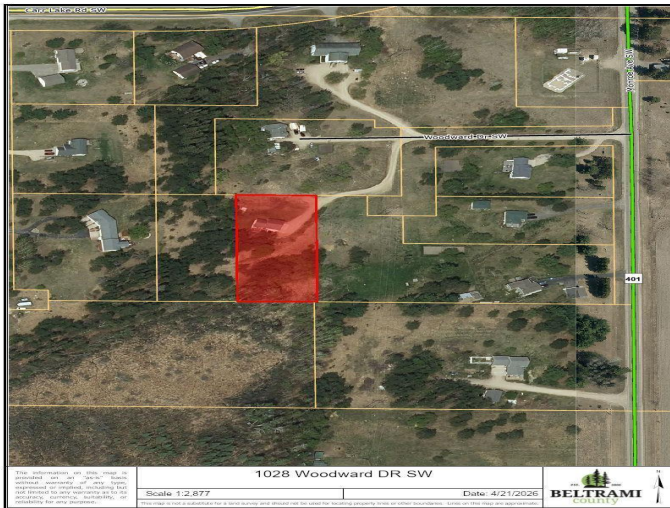
\$296,800
MLS 7059590 Residential
1028 Woodward Drive
Bemidji MN 56601



website: www.AffinityRealEstate.com | email: info@affinityrealestate.com | office: 218-237-3333 | fax:218-237-3377



\$296,800
MLS 7059590 Residential
1028 Woodward Drive
Bemidji MN 56601



website: www.AffinityRealEstate.com | email: info@affinityrealestate.com | office: 218-237-3333 | fax:218-237-3377



\$296,800
 MLS 7059590 Residential
 1028 Woodward Drive
 Bemidji MN 56601