



MLS 7059641 Residential

\$429,000

3,874 sq ft
4 bedrooms
2 baths

3999 Graycalm Court
Bemidji MN 56601

Status: Active

Description:

Highly sought-after one-level living in this immaculate, one-owner home! Tucked at the end of a quiet cul-de-sac on a private wooded lot, this property offers a serene retreat just minutes from Bemidji. Featuring 4 bedrooms, 2 bathrooms, and a thoughtfully designed split-bedroom floor plan, the private primary suite is set apart from the additional bedrooms—creating a true sense of space and seclusion. Extra-wide doors and hallways provide accessibility, while in-floor heat, a cozy gas fireplace, and rich hardwood and tile floors add warmth and comfort throughout. A paved driveway, in-ground sprinkler system, and a secluded backyard patio set the stage for effortless outdoor living and entertaining. The heated and zoned attached 3-stall garage with a dedicated workshop offers exceptional versatility. Move-in ready with quality construction—this home was built for a structural engineer and has been meticulously maintained. This is more than a home, it's your own private retreat.

Additional Details:

Year Built	2005
Lot Acres	2.45
Lot Dimensions	452x477x655
Garage Stalls	3
School District	31
Taxes	\$3,340
Taxes with Assessments	\$3,340
Tax Year	2026

Additional Features:

Basement: None **Fuel:** Array **Garage:** 3 **Heat:** Dual Fuel/Off Peak, Forced Air, In-Floor Heating **Sewer:** Septic System Compliant - Yes **Water:** Well **Air Conditioning:** Central Air

Driving Directions:

From Bemidji take Bemidji Ave S to US Hwy 2 E to Graycalm Ct SE. Turn right on Graycalm Ct SE. Affinity Real Estate has your right.



Listed By:
Better Homes and Gardens Real Estate First Choice

Affinity Real Estate Inc. participates in the Regional Multiple Listing Service of Minnesota, Inc Broker Reciprocity (sm) program, allowing us to display other broker's listings on our website. All properties are subject to prior sale, change or withdrawal.



218-237-3333
info@affinityrealestate.com



Affinity Real Estate - 600 Park Avenue South - Park Rapids MN 56470



website: www.AffinityRealEstate.com | email: info@affinityrealestate.com | office: 218-237-3333 | fax: 218-237-3377

Affinity
REAL ESTATE INC

\$429,000
MLS 7059641 Residential
3999 Graycalm Court
Bemidji MN 56601



website: www.AffinityRealEstate.com | email: info@affinityrealestate.com | office: 218-237-3333 | fax: 218-237-3377

Affinity
REAL ESTATE INC

\$429,000
MLS 7059641 Residential
3999 Graycalm Court
Bemidji MN 56601



website: www.AffinityRealEstate.com | email: info@affinityrealestate.com | office: 218-237-3333 | fax: 218-237-3377

Affinity
REAL ESTATE INC

\$429,000
MLS 7059641 Residential
3999 Graycalm Court
Bemidji MN 56601



website: www.AffinityRealEstate.com | email: info@affinityrealestate.com | office: 218-237-3333 | fax: 218-237-3377

Affinity
REAL ESTATE INC

\$429,000
MLS 7059641 Residential
3999 Graycalm Court
Bemidji MN 56601



website: www.AffinityRealEstate.com | email: info@affinityrealestate.com | office: 218-237-3333 | fax:218-237-3377

Affinity
REAL ESTATE INC

\$429,000
MLS 7059641 Residential
3999 Graycalm Court
Bemidji MN 56601



website: www.AffinityRealEstate.com | email: info@affinityrealestate.com | office: 218-237-3333 | fax:218-237-3377



\$429,000
MLS 7059641 Residential
3999 Graycalm Court
Bemidji MN 56601



website: www.AffinityRealEstate.com | email: info@affinityrealestate.com | office: 218-237-3333 | fax:218-237-3377



\$429,000
MLS 7059641 Residential
3999 Graycalm Court
Bemidji MN 56601



website: www.AffinityRealEstate.com | email: info@affinityrealestate.com | office: 218-237-3333 | fax:218-237-3377

Affinity
REAL ESTATE INC

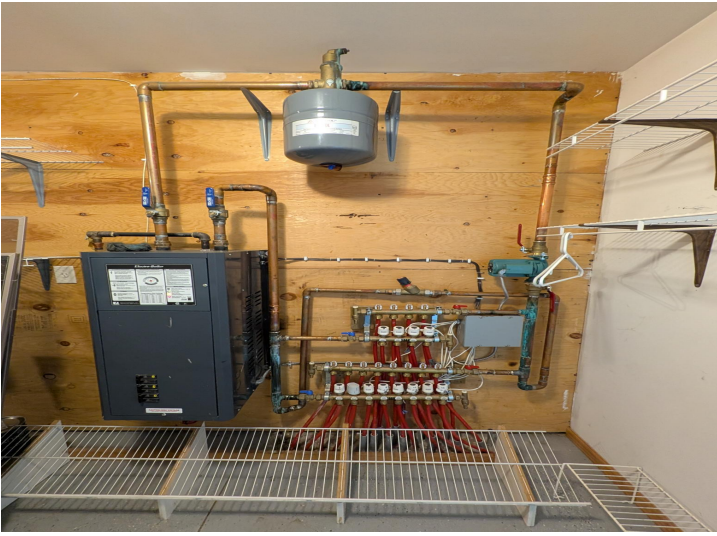
\$429,000
MLS 7059641 Residential
3999 Graycalm Court
Bemidji MN 56601



website: www.AffinityRealEstate.com | email: info@affinityrealestate.com | office: 218-237-3333 | fax:218-237-3377



\$429,000
MLS 7059641 Residential
3999 Graycalm Court
Bemidji MN 56601



website: www.AffinityRealEstate.com | email: info@affinityrealestate.com | office: 218-237-3333 | fax:218-237-3377



\$429,000
MLS 7059641 Residential
3999 Graycalm Court
Bemidji MN 56601



website: www.AffinityRealEstate.com | email: info@affinityrealestate.com | office: 218-237-3333 | fax:218-237-3377



\$429,000
MLS 7059641 Residential
3999 Graycalm Court
Bemidji MN 56601