



MLS 7059719 Residential

\$499,900

1,877 sq ft
3 bedrooms
2 baths

18216 County Highway 29
Fergus Falls MN 56537

Status: Active

Description:

Set on nearly 23 acres just 10 minutes from Fergus Falls and minutes from the public access to Swan Lake, this updated quintessential farmhouse delivers the space, privacy, and versatility you're looking for. This 3 bedroom, 2 bathroom home blends timeless character with modern upgrades, and features a brand new kitchen with custom cabinetry, sleek countertops, and stainless steel appliances, plus the convenience of main floor living with a bedroom, bathroom, and laundry all on one level. Steel siding, updated windows, a high efficiency furnace with central air, and a composite deck ensure comfort and low maintenance year round, while the partially finished lower level offers additional flexible space. Outside, the quality continues with an impressive number of outbuildings including a double detached garage, heated shop, classic barn with workshop space, two metal pole buildings with power, and a cattle shed, creating endless potential for hobbies, storage, or business use. With direct access to the Central Lakes Trail right out your back door and acreage that invites recreation, animals, or future expansion, this is more than a home, it is an opportunity. Properties offering this type of land, improvements, and location rarely come available, schedule your private showing today. The neighboring 16 acres is available for purchase for the buyer who wants even more room to roam.

Additional Details:

Year Built	1941
Lot Acres	22.96
Lot Dimensions	Irregular
Garage Stalls	2
School District	544
Taxes	\$146
Taxes with Assessments	\$146
Tax Year	2026

Additional Features:

Fuel: Array **Heat:** Forced Air

Driving Directions:

Head S on S Union Ave. Turn E onto W Vernon Ave and continue following Pebble Lake Rd. Turn NE onto MN-210 E, then turn S onto Co Hwy 29 then turn E into the property.



Listed By:
Keller Williams Realty Professionals

Affinity Real Estate Inc. participates in the Regional Multiple Listing Service of Minnesota, Inc Broker Reciprocity (sm) program, allowing us to display other broker's listings on our website. All properties are subject to prior sale, change or withdrawal.



Call Affinity Real Estate

218-237-3333

info@affinityrealestate.com



Affinity Real Estate - 600 Park Avenue South - Park Rapids MN 56470



website: www.AffinityRealEstate.com | email: info@affinityrealestate.com | office: 218-237-3333 | fax:218-237-3377



\$499,900
MLS 7059719 Residential
18216 County Highway 29
Fergus Falls MN 56537



website: www.AffinityRealEstate.com | email: info@affinityrealestate.com | office: 218-237-3333 | fax: 218-237-3377

Affinity
REAL ESTATE INC

\$499,900
MLS 7059719 Residential
18216 County Highway 29
Fergus Falls MN 56537



website: www.AffinityRealEstate.com | email: info@affinityrealestate.com | office: 218-237-3333 | fax:218-237-3377

Affinity
REAL ESTATE INC

\$499,900
MLS 7059719 Residential
18216 County Highway 29
Fergus Falls MN 56537



website: www.AffinityRealEstate.com | email: info@affinityrealestate.com | office: 218-237-3333 | fax: 218-237-3377

Affinity
REAL ESTATE INC

\$499,900
MLS 7059719 Residential
18216 County Highway 29
Fergus Falls MN 56537



website: www.AffinityRealEstate.com | email: info@affinityrealestate.com | office: 218-237-3333 | fax: 218-237-3377

Affinity
REAL ESTATE INC

\$499,900
MLS 7059719 Residential
18216 County Highway 29
Fergus Falls MN 56537



website: www.AffinityRealEstate.com | email: info@affinityrealestate.com | office: 218-237-3333 | fax:218-237-3377



\$499,900
MLS 7059719 Residential
18216 County Highway 29
Fergus Falls MN 56537



website: www.AffinityRealEstate.com | email: info@affinityrealestate.com | office: 218-237-3333 | fax:218-237-3377



\$499,900
MLS 7059719 Residential
18216 County Highway 29
Fergus Falls MN 56537



website: www.AffinityRealEstate.com | email: info@affinityrealestate.com | office: 218-237-3333 | fax: 218-237-3377

Affinity
REAL ESTATE INC

\$499,900
MLS 7059719 Residential
18216 County Highway 29
Fergus Falls MN 56537



website: www.AffinityRealEstate.com | email: info@affinityrealestate.com | office: 218-237-3333 | fax:218-237-3377

Affinity
REAL ESTATE INC

\$499,900
MLS 7059719 Residential
18216 County Highway 29
Fergus Falls MN 56537



website: www.AffinityRealEstate.com | email: info@affinityrealestate.com | office: 218-237-3333 | fax:218-237-3377



\$499,900
MLS 7059719 Residential
18216 County Highway 29
Fergus Falls MN 56537



website: www.AffinityRealEstate.com | email: info@affinityrealestate.com | office: 218-237-3333 | fax:218-237-3377



\$499,900
MLS 7059719 Residential
18216 County Highway 29
Fergus Falls MN 56537



website: www.AffinityRealEstate.com | email: info@affinityrealestate.com | office: 218-237-3333 | fax:218-237-3377



\$499,900
MLS 7059719 Residential
18216 County Highway 29
Fergus Falls MN 56537



website: www.AffinityRealEstate.com | email: info@affinityrealestate.com | office: 218-237-3333 | fax:218-237-3377



\$499,900
MLS 7059719 Residential
18216 County Highway 29
Fergus Falls MN 56537



website: www.AffinityRealEstate.com | email: info@affinityrealestate.com | office: 218-237-3333 | fax:218-237-3377

Affinity
REAL ESTATE INC

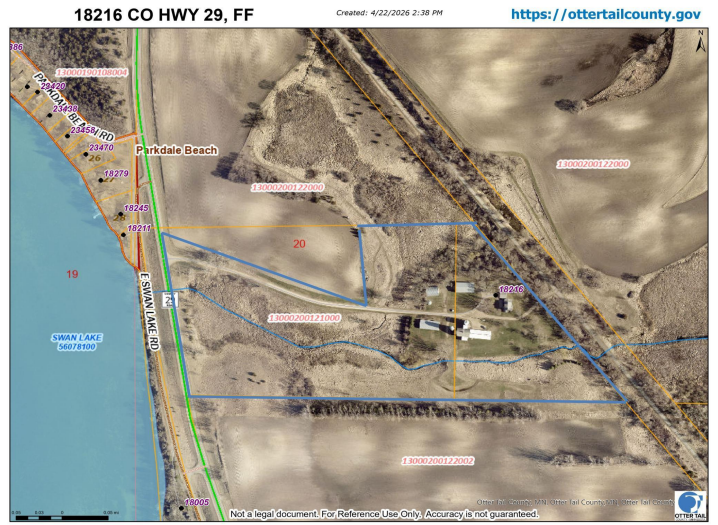
\$499,900
MLS 7059719 Residential
18216 County Highway 29
Fergus Falls MN 56537



website: www.AffinityRealEstate.com | email: info@affinityrealestate.com | office: 218-237-3333 | fax:218-237-3377



\$499,900
MLS 7059719 Residential
18216 County Highway 29
Fergus Falls MN 56537



website: www.AffinityRealEstate.com | email: info@affinityrealestate.com | office: 218-237-3333 | fax:218-237-3377



\$499,900
MLS 7059719 Residential
18216 County Highway 29
Fergus Falls MN 56537