



MLS 7060204 Residential

\$699,900

3,024 sq ft
2 bedrooms
3 baths

19605 Jigsaw Drive
Park Rapids MN 56470

Status: Active

Description:

Your Dream Log Home on Bad Axe Lake Awaits! Discover the beauty of custom living in this stunning log home, perfectly situated on the tranquil shores of Bad Axe Lake. With spectacular views and surrounded by hundreds of acres of county land for you to explore, this property offers the ultimate escape. Step inside to find a welcoming open layout featuring oak flooring and a cozy fieldstone propane fireplace, creating a warm ambiance perfect for those chilly evenings. The kitchen is excellent for cooking and entertaining, featuring granite counters and a modern design. This home offers two spacious bedrooms and three bathrooms. The fully finished basement has two bonus rooms with full egress windows, in-floor heating, and elegant ceramic tile. An energy-efficient dual fuel high-efficiency furnace keeps you comfortable year-round, while LED lighting ensures a bright, modern feel. Plus, you'll love the convenience of the heated attached garage, providing ample space for all your outdoor gear. Enjoy excellent fishing on Bad Axe Lake, known for its undisturbed beauty due to the limited development of the lake's pristine shoreline and the absence of public boat access. Don't miss this exceptional opportunity to own a slice of paradise! A driveable path down to the lake provides convenient access. Schedule your showing today and experience lakeside living at its finest!

Additional Details:


| | |
|------------------------|-----------------|
| Year Built | 2004 |
| Lot Acres | 1.04 |
| Lot Dimensions | 155x279x157x303 |
| Garage Stalls | 2 |
| School District | 309 |
| Taxes | \$2,925 |
| Taxes with Assessments | \$3,170 |
| Tax Year | 2026 |

Additional Features:

Fuel: Array **Heat:** Dual Fuel/Off Peak, Forced Air, Fireplace(s), In-Floor Heating

Driving Directions:

Traveling North from Park Rapids on Highway 4, travel past Emmaville, and in about 2 miles, take a right onto Jigsaw Drive. Follow until the property is on the right.



Listed By:
Wolff & Simon Real Estate

Affinity Real Estate Inc. participates in the Regional Multiple Listing Service of Minnesota, Inc Broker Reciprocity (sm) program, allowing us to display other broker's listings on our website. All properties are subject to prior sale, change or withdrawal.



Call Affinity Real Estate

218-237-3333

info@affinityrealestate.com



Affinity Real Estate - 600 Park Avenue South - Park Rapids MN 56470



website: www.AffinityRealEstate.com | email: info@affinityrealestate.com | office: 218-237-3333 | fax:218-237-3377



\$699,900
MLS 7060204 Residential
19605 Jigsaw Drive
Park Rapids MN 56470



website: www.AffinityRealEstate.com | email: info@affinityrealestate.com | office: 218-237-3333 | fax:218-237-3377



\$699,900
MLS 7060204 Residential
19605 Jigsaw Drive
Park Rapids MN 56470



website: www.AffinityRealEstate.com | email: info@affinityrealestate.com | office: 218-237-3333 | fax: 218-237-3377

Affinity
REAL ESTATE INC

\$699,900
MLS 7060204 Residential
19605 Jigsaw Drive
Park Rapids MN 56470



website: www.AffinityRealEstate.com | email: info@affinityrealestate.com | office: 218-237-3333 | fax:218-237-3377

Affinity
REAL ESTATE INC

\$699,900
MLS 7060204 Residential
19605 Jigsaw Drive
Park Rapids MN 56470



website: www.AffinityRealEstate.com | email: info@affinityrealestate.com | office: 218-237-3333 | fax: 218-237-3377

Affinity
REAL ESTATE INC

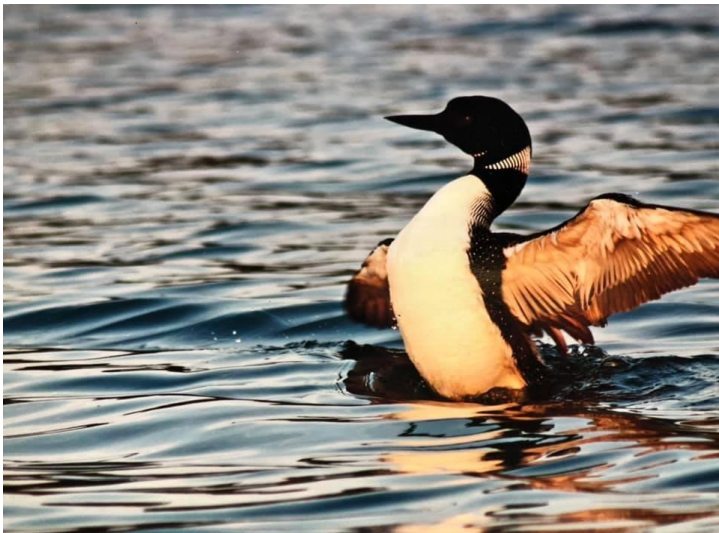
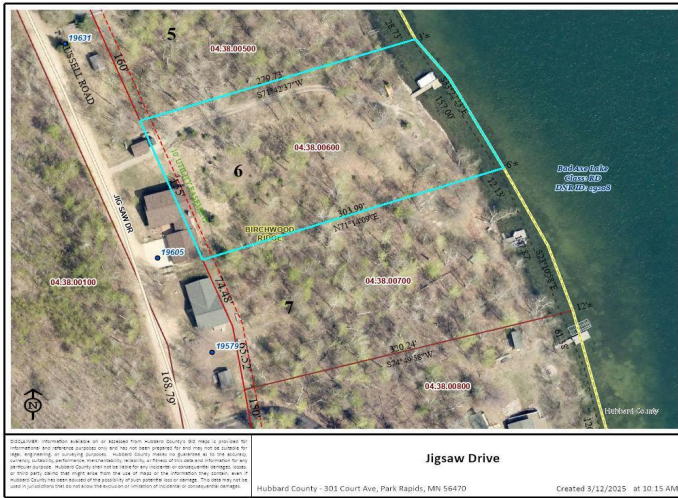
\$699,900
MLS 7060204 Residential
19605 Jigsaw Drive
Park Rapids MN 56470



website: www.AffinityRealEstate.com | email: info@affinityrealestate.com | office: 218-237-3333 | fax:218-237-3377

Affinity
REAL ESTATE INC

\$699,900
MLS 7060204 Residential
19605 Jigsaw Drive
Park Rapids MN 56470



website: www.AffinityRealEstate.com | email: info@affinityrealestate.com | office: 218-237-3333 | fax: 218-237-3377

Affinity
REAL ESTATE INC

\$699,900
MLS 7060204 Residential
19605 Jigsaw Drive
Park Rapids MN 56470



website: www.AffinityRealEstate.com | email: info@affinityrealestate.com | office: 218-237-3333 | fax:218-237-3377

Affinity
REAL ESTATE INC

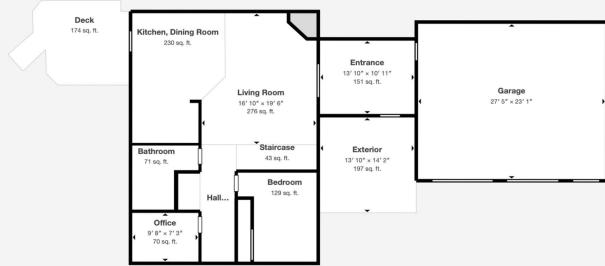
\$699,900
MLS 7060204 Residential
19605 Jigsaw Drive
Park Rapids MN 56470



website: www.AffinityRealEstate.com | email: info@affinityrealestate.com | office: 218-237-3333 | fax:218-237-3377

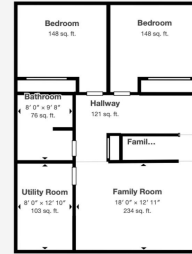
Affinity
REAL ESTATE INC

\$699,900
MLS 7060204 Residential
19605 Jigsaw Drive
Park Rapids MN 56470



Matterport Property Report
 19605 Jig Saw Dr
 Gross Floor Area - Full Property 3,337 sq. ft. | Floor 2 1,241 sq. ft.
Sizes and dimensions are approximate, actual may vary.

Visit 3D space on
 Matterport



Matterport Property Report
 19605 Jig Saw Dr
 Gross Floor Area - Full Property 3,337 sq. ft. | Floor 1 1,067 sq. ft.
Sizes and dimensions are approximate, actual may vary.

Visit 3D space on
 Matterport



Matterport Property Report
 19605 Jig Saw Dr
 Gross Floor Area - Full Property 3,337 sq. ft. | Floor 3 1,030 sq. ft.
Sizes and dimensions are approximate, actual may vary.

Visit 3D space on
 Matterport

website: www.AffinityRealEstate.com | email: info@affinityrealestate.com | office: 218-237-3333 | fax:218-237-3377



\$699,900
 MLS 7060204 Residential
 19605 Jigsaw Drive
 Park Rapids MN 56470