



MLS 7060365 Residential

\$599,900

2,402 sq ft
2 bedrooms
2 baths

33649 Lupine Drive
Cushing MN 56443

Status: Coming Soon

Description:

Enjoy panoramic lake views the moment you step inside this beautiful Pine Island home in the Cushing area. The main living area features vaulted tongue-and-groove ceilings, a classic brick wood-burning fireplace, and granite countertops, creating a warm and comfortable space. Patio doors lead out to a large deck—perfect for entertaining or relaxing while taking in the sunsets.

You'll find great lake views from both levels of the home, along with convenient touches like laundry on each floor. The walkout lower level adds even more living space, including a summer kitchen, large family and recreation areas, a bathroom, and a potential additional bedroom—ideal for guests, a home office, or future use.

Situated on a spacious .52+/- acre lot, there's also room to add another garage or outbuilding for extra storage or lake equipment. A great opportunity to enjoy lake living with plenty of space inside and out.

Additional Details:

Year Built	1986
Lot Acres	0.52
Lot Dimensions	91x275x96x248
School District	787
Taxes	\$3,624
Taxes with Assessments	\$3,624
Tax Year	2025

Additional Features:

Fuel: Array **Heat:** Forced Air, Heat Pump

Driving Directions:

From HWY 10 turn West onto 260th street/county rd 16 and go 6 miles to 321st avenue and go down to the second Lupine Dr approach and take a right, properties driveway will be the first left.



Listed By:
Edina Realty, Inc.

Affinity Real Estate Inc. participates in the Regional Multiple Listing Service of Minnesota, Inc Broker Reciprocity (sm) program, allowing us to display other broker's listings on our website. All properties are subject to prior sale, change or withdrawal.



Call Affinity Real Estate

218-237-3333

info@affinityrealestate.com



Affinity Real Estate - 600 Park Avenue South - Park Rapids MN 56470



website: www.AffinityRealEstate.com | email: info@affinityrealestate.com | office: 218-237-3333 | fax: 218-237-3377

Affinity
REAL ESTATE INC

\$599,900
MLS 7060365 Residential
33649 Lupine Drive
Cushing MN 56443



website: www.AffinityRealEstate.com | email: info@affinityrealestate.com | office: 218-237-3333 | fax: 218-237-3377

Affinity
REAL ESTATE INC

\$599,900
MLS 7060365 Residential
33649 Lupine Drive
Cushing MN 56443



website: www.AffinityRealEstate.com | email: info@affinityrealestate.com | office: 218-237-3333 | fax: 218-237-3377

Affinity
REAL ESTATE INC

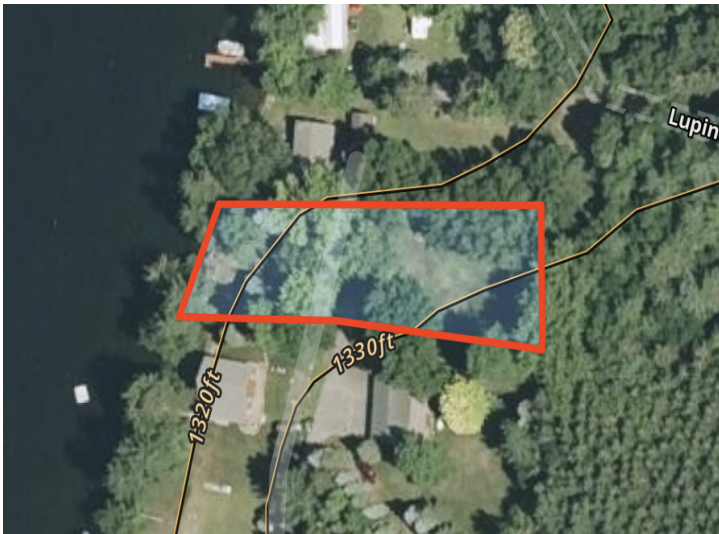
\$599,900
MLS 7060365 Residential
33649 Lupine Drive
Cushing MN 56443



website: www.AffinityRealEstate.com | email: info@affinityrealestate.com | office: 218-237-3333 | fax:218-237-3377



\$599,900
MLS 7060365 Residential
33649 Lupine Drive
Cushing MN 56443



website: www.AffinityRealEstate.com | email: info@affinityrealestate.com | office: 218-237-3333 | fax:218-237-3377



\$599,900
MLS 7060365 Residential
33649 Lupine Drive
Cushing MN 56443



website: www.AffinityRealEstate.com | email: info@affinityrealestate.com | office: 218-237-3333 | fax:218-237-3377



\$599,900
MLS 7060365 Residential
33649 Lupine Drive
Cushing MN 56443