



MLS 7060376 Lake Land

\$49,900

Description:

Beautiful 3.69-acre lot with shared access to the scenic 10th Crow Wing Lake, part of the sought-after Crow Wing Lake chain! With power already on the lot and level areas ready for your dream home or cabin, you can start enjoying lake life right away. Don't miss this rare opportunity call today!

Additional Details:

Lot Acres	3.69
Lot Dimensions	Irr
School District	113
Taxes	\$162
Taxes with Assessments	\$162
Tax Year	2026

Additional Features:

Driving Directions:

From 34/71 in Park Rapids, east on 34 to a right on Gateway Lane, just before Akeley. Take a left on Gopher Lane follow sign.



Listed By:
Wolff & Simon Real Estate

Affinity Real Estate Inc. participates in the Regional Multiple Listing Service of Minnesota, Inc Broker Reciprocity (sm) program, allowing us to display other broker's listings on our website. All properties are subject to prior sale, change or withdrawal.



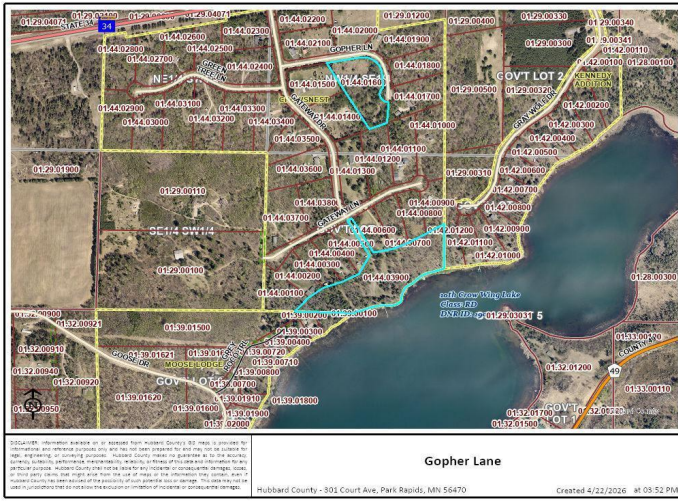
Call Affinity Real Estate

218-237-3333

info@affinityrealestate.com



Affinity Real Estate - 600 Park Avenue South - Park Rapids MN 56470



website: www.AffinityRealEstate.com | email: info@affinityrealestate.com | office: 218-237-3333 | fax:218-237-3377



\$49,900
 MLS 7060376 Lake Land
 29145 Gopher Lane
 Akeley MN 56433



website: www.AffinityRealEstate.com | email: info@affinityrealestate.com | office: 218-237-3333 | fax:218-237-3377

Affinity
REAL ESTATE INC

\$49,900
MLS 7060376 Lake Land
29145 Gopher Lane
Akeley MN 56433



website: www.AffinityRealEstate.com | email: info@affinityrealestate.com | office: 218-237-3333 | fax:218-237-3377



\$49,900
MLS 7060376 Lake Land
29145 Gopher Lane
Akeley MN 56433