



MLS 7060535 Residential

\$269,000

1,431 sq ft
3 bedrooms
2 baths

1625 2nd Street
Bemidji MN 56601

Status: Active

Description:

Welcome to easy, single-level living in this beautifully updated 3-bedroom, 2-bath home! Designed for comfort and convenience, this property features a primary suite complete with a private en suite bathroom. Step inside to discover fresh new flooring and a suite of new appliances, giving the home a modern, move-in-ready feel. Natural light fills the living spaces, creating a warm and welcoming atmosphere throughout. Situated on a large corner lot, this property offers plenty of outdoor space to enjoy. The expansive deck is perfect for entertaining, relaxing, or hosting summer gatherings. Located just minutes from parks and trails, you'll love the blend of tranquility and accessibility. This home truly checks all the boxes, comfort, updates, location, and charm. A true gem you won't want to miss!

Additional Details:

Year Built	2012
Lot Acres	0.321
Lot Dimensions	100x140
Garage Stalls	2
School District	31
Taxes	\$2,870
Taxes with Assessments	\$2,870
Tax Year	2025

Additional Features:

Basement: None **Fuel:** Natural Gas **Garage:** 2 **Heat:** Ductless Mini-Split, Forced Air **Sewer:** City Sewer/Connected **Water:** City Water/Connected
Air Conditioning: Ductless Mini-Split

Driving Directions:

Take 1st street head East, left at Stoner Ave, left on 2nd Street home is on the corner of 2nd Street.



Listed By:
Grimes Realty

Affinity Real Estate Inc. participates in the Regional Multiple Listing Service of Minnesota, Inc Broker Reciprocity (sm) program, allowing us to display other broker's listings on our website. All properties are subject to prior sale, change or withdrawal.



Call Affinity Real Estate

218-237-3333

info@affinityrealestate.com



Affinity Real Estate - 600 Park Avenue South - Park Rapids MN 56470



website: www.AffinityRealEstate.com | email: info@affinityrealestate.com | office: 218-237-3333 | fax:218-237-3377

Affinity
REAL ESTATE INC

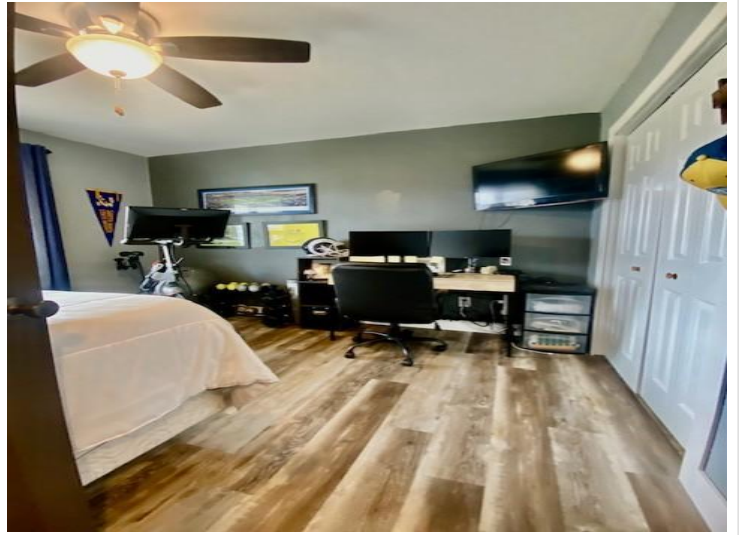
\$269,000
MLS 7060535 Residential
1625 2nd Street
Bemidji MN 56601



website: www.AffinityRealEstate.com | email: info@affinityrealestate.com | office: 218-237-3333 | fax:218-237-3377



\$269,000
MLS 7060535 Residential
1625 2nd Street
Bemidji MN 56601



website: www.AffinityRealEstate.com | email: info@affinityrealestate.com | office: 218-237-3333 | fax:218-237-3377

Affinity
REAL ESTATE INC

\$269,000
MLS 7060535 Residential
1625 2nd Street
Bemidji MN 56601



website: www.AffinityRealEstate.com | email: info@affinityrealestate.com | office: 218-237-3333 | fax: 218-237-3377

Affinity
REAL ESTATE INC

\$269,000
MLS 7060535 Residential
1625 2nd Street
Bemidji MN 56601



website: www.AffinityRealEstate.com | email: info@affinityrealestate.com | office: 218-237-3333 | fax:218-237-3377



\$269,000
MLS 7060535 Residential
1625 2nd Street
Bemidji MN 56601