



MLS 7060569 Residential

\$379,900

2,240 sq ft
2 bedrooms
1 baths

23328 Boreal Road
Shevlin MN 56676

Status: Active

Description:

Nestled among the pines, you'll find a retreat like no other. Set along the shores of Sandy Lake, this property offers the perfect escape into lake life.

The home features 2 bedrooms and 1 bath on the main level, along with a full walkout basement, two fireplaces, and a massive wraparound deck overlooking approximately 7 +/- acres of scenic landscape. An artesian creek meanders through the property, adding to the natural beauty and tranquility. Storage is abundant with a 3-stall detached garage and an impressive 32x64 pole shed - perfect for all your lake and recreational toys. Located near an extensive snowmobile trail system and surrounded by numerous lakes, this property is ideal for year-round enjoyment. Sandy Lake is known for its deep, clear waters, excellent fishing, and sandy shoreline - making it a true Northwoods gem.

Additional Details:

Year Built	1979
Lot Acres	7
Lot Dimensions	710x2500x1050x1400
Garage Stalls	3
School District	31
Taxes	\$2,556
Taxes with Assessments	\$2,556
Tax Year	2025

Additional Features:

Fuel: Array **Heat:** Baseboard, Fireplace(s)

Driving Directions:

HWY 2 west of Bemidji. North on 89 roughly 12 miles. West on Cty 24 (Aure) 3.5 miles. North on Boreal rd 2 miles to property. (About 20 miles NW of Bemidji)



Listed By:
Grimes Realty

Affinity Real Estate Inc. participates in the Regional Multiple Listing Service of Minnesota, Inc Broker Reciprocity (sm) program, allowing us to display other broker's listings on our website. All properties are subject to prior sale, change or withdrawal.



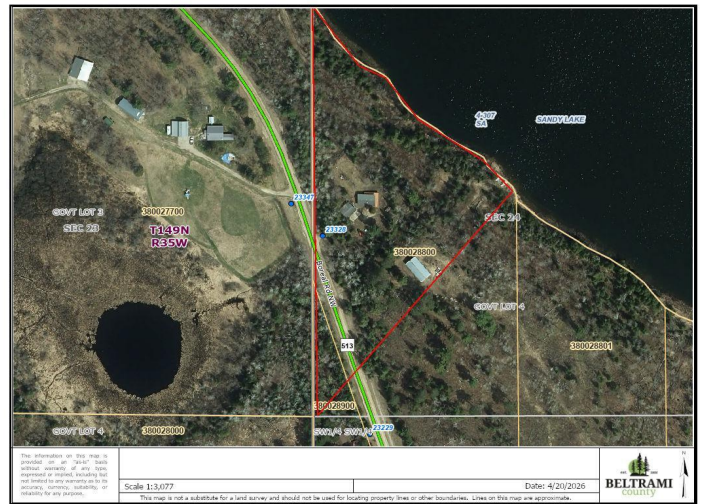
Call Affinity Real Estate

218-237-3333

info@affinityrealestate.com



Affinity Real Estate - 600 Park Avenue South - Park Rapids MN 56470



website: www.AffinityRealEstate.com | email: info@affinityrealestate.com | office: 218-237-3333 | fax: 218-237-3377

Affinity
REAL ESTATE INC

\$379,900
MLS 7060569 Residential
23328 Boreal Road
Shevlin MN 56676



website: www.AffinityRealEstate.com | email: info@affinityrealestate.com | office: 218-237-3333 | fax:218-237-3377



\$379,900
MLS 7060569 Residential
23328 Boreal Road
Shevlin MN 56676



website: www.AffinityRealEstate.com | email: info@affinityrealestate.com | office: 218-237-3333 | fax:218-237-3377



\$379,900
MLS 7060569 Residential
23328 Boreal Road
Shevlin MN 56676



website: www.AffinityRealEstate.com | email: info@affinityrealestate.com | office: 218-237-3333 | fax: 218-237-3377

Affinity
REAL ESTATE INC

\$379,900
MLS 7060569 Residential
23328 Boreal Road
Shevlin MN 56676



website: www.AffinityRealEstate.com | email: info@affinityrealestate.com | office: 218-237-3333 | fax:218-237-3377



\$379,900
MLS 7060569 Residential
23328 Boreal Road
Shevlin MN 56676



website: www.AffinityRealEstate.com | email: info@affinityrealestate.com | office: 218-237-3333 | fax:218-237-3377



\$379,900
MLS 7060569 Residential
23328 Boreal Road
Shevlin MN 56676



website: www.AffinityRealEstate.com | email: info@affinityrealestate.com | office: 218-237-3333 | fax:218-237-3377



\$379,900
MLS 7060569 Residential
23328 Boreal Road
Shevlin MN 56676



website: www.AffinityRealEstate.com | email: info@affinityrealestate.com | office: 218-237-3333 | fax:218-237-3377



\$379,900
MLS 7060569 Residential
23328 Boreal Road
Shevlin MN 56676



website: www.AffinityRealEstate.com | email: info@affinityrealestate.com | office: 218-237-3333 | fax:218-237-3377



\$379,900
MLS 7060569 Residential
23328 Boreal Road
Shevlin MN 56676



website: www.AffinityRealEstate.com | email: info@affinityrealestate.com | office: 218-237-3333 | fax:218-237-3377



\$379,900
MLS 7060569 Residential
23328 Boreal Road
Shevlin MN 56676



website: www.AffinityRealEstate.com | email: info@affinityrealestate.com | office: 218-237-3333 | fax:218-237-3377



\$379,900
MLS 7060569 Residential
23328 Boreal Road
Shevlin MN 56676



website: www.AffinityRealEstate.com | email: info@affinityrealestate.com | office: 218-237-3333 | fax:218-237-3377



\$379,900
MLS 7060569 Residential
23328 Boreal Road
Shevlin MN 56676



website: www.AffinityRealEstate.com | email: info@affinityrealestate.com | office: 218-237-3333 | fax:218-237-3377



\$379,900
MLS 7060569 Residential
23328 Boreal Road
Shevlin MN 56676