



MLS 7060573 Residential

\$419,000

1,064 sq ft
3 bedrooms
2 baths

67161 348th Place
Hill City MN 55748

Status: Active

Description:

Excellent opportunity to own affordable lake front on sought after Hill Lake! This home is situated on a west-facing, level lot, close to town and only a short 15 minutes from Target in Grand Rapids. This property has a newer roof and new septic in 2021. Excellent layout to include a lakeside primary suite with full bath and closet, along with main floor laundry. The kitchen is updated with a modern color pallet and offers access to the new backyard patio. Enjoy the lakeviews while taking in the ambiance of the living room fireplace on those cold Minnesota nights. Multiple gathering spaces and ample storage are added bonuses you'll appreciate. Hill Lake homes do not come up often! This is a rare opportunity for a year round home or cabin!

Additional Details:

Year Built	1986
Lot Acres	0.643
Lot Dimensions	100 x 269 x 101 x 294
Garage Stalls	2
School District	2
Taxes	\$2,582
Taxes with Assessments	\$2,582
Tax Year	2026

Additional Features:

Basement: Block **Fuel:** Array **Garage:** 2 **Heat:** Forced Air **Sewer:** Septic System Compliant - Yes **Water:** Well **Air Conditioning:** Central Air

Driving Directions:

169 South. East on HWY 200. Left on 348th to house on left.



Listed By:
COLDWELL BANKER NORTHWOODS

Affinity Real Estate Inc. participates in the Regional Multiple Listing Service of Minnesota, Inc Broker Reciprocity (sm) program, allowing us to display other broker's listings on our website. All properties are subject to prior sale, change or withdrawal.



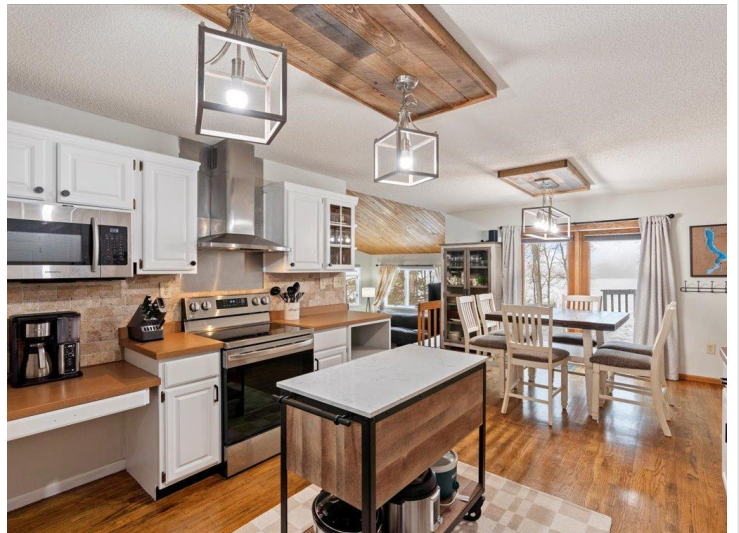
Call Affinity Real Estate

218-237-3333

info@affinityrealestate.com



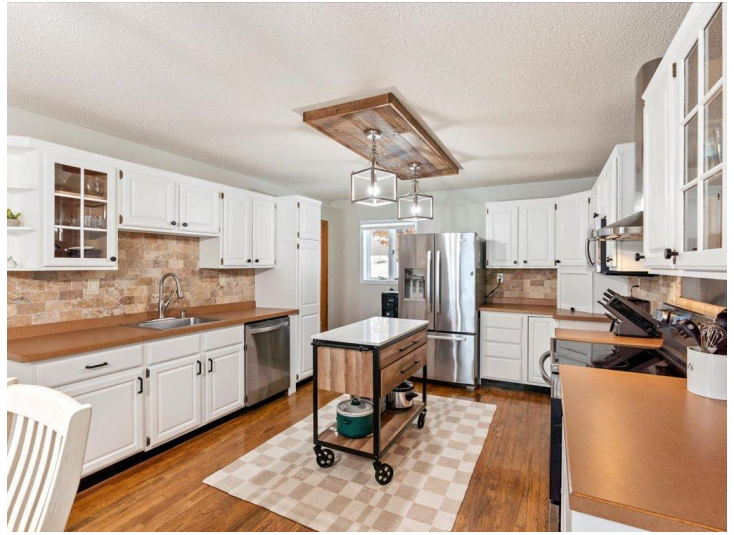
Affinity Real Estate - 600 Park Avenue South - Park Rapids MN 56470



website: www.AffinityRealEstate.com | email: info@affinityrealestate.com | office: 218-237-3333 | fax:218-237-3377



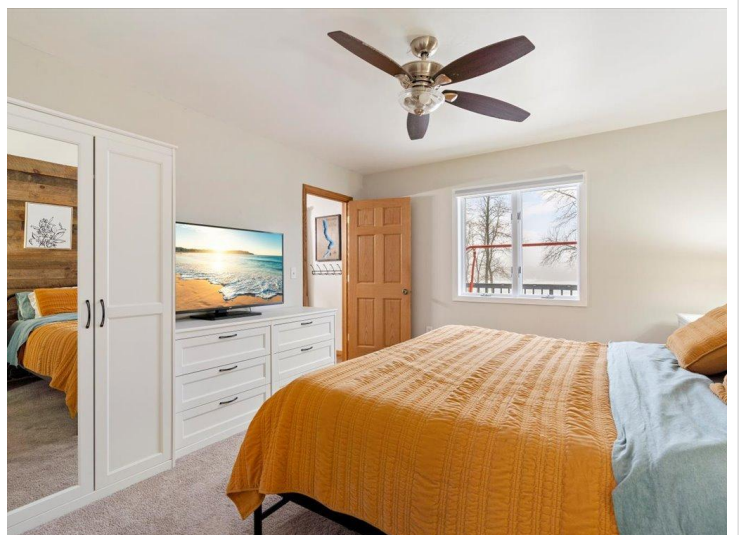
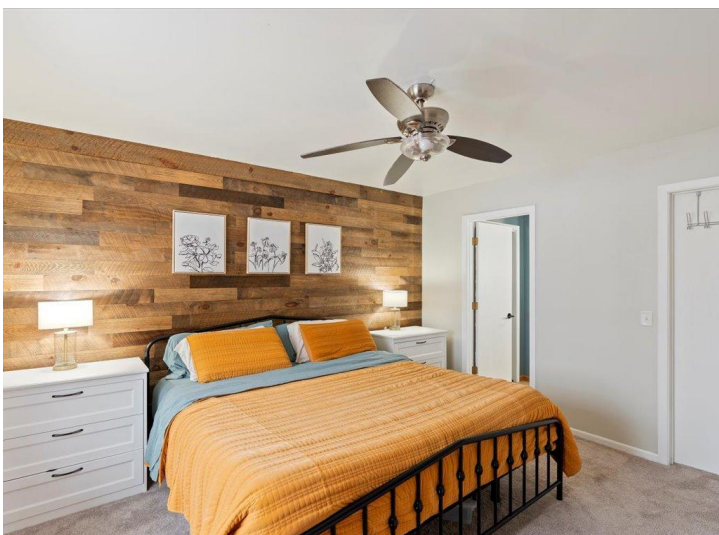
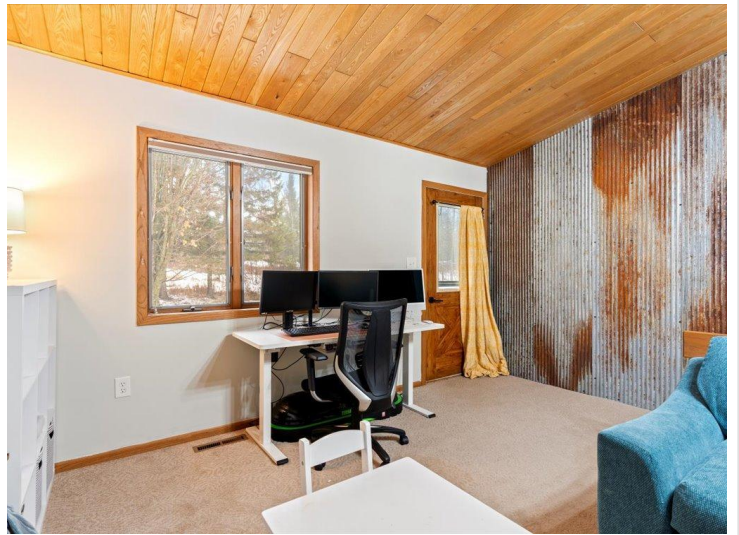
\$419,000
MLS 7060573 Residential
67161 348th Place
Hill City MN 55748



website: www.AffinityRealEstate.com | email: info@affinityrealestate.com | office: 218-237-3333 | fax: 218-237-3377

Affinity
REAL ESTATE INC

\$419,000
MLS 7060573 Residential
67161 348th Place
Hill City MN 55748



website: www.AffinityRealEstate.com | email: info@affinityrealestate.com | office: 218-237-3333 | fax: 218-237-3377



\$419,000
MLS 7060573 Residential
67161 348th Place
Hill City MN 55748



website: www.AffinityRealEstate.com | email: info@affinityrealestate.com | office: 218-237-3333 | fax: 218-237-3377

Affinity
REAL ESTATE INC

\$419,000
MLS 7060573 Residential
67161 348th Place
Hill City MN 55748



website: www.AffinityRealEstate.com | email: info@affinityrealestate.com | office: 218-237-3333 | fax:218-237-3377

Affinity
REAL ESTATE INC

\$419,000
MLS 7060573 Residential
67161 348th Place
Hill City MN 55748



website: www.AffinityRealEstate.com | email: info@affinityrealestate.com | office: 218-237-3333 | fax: 218-237-3377

Affinity
REAL ESTATE INC

\$419,000
MLS 7060573 Residential
67161 348th Place
Hill City MN 55748



website: www.AffinityRealEstate.com | email: info@affinityrealestate.com | office: 218-237-3333 | fax:218-237-3377



\$419,000
MLS 7060573 Residential
67161 348th Place
Hill City MN 55748