



MLS 7060585 Residential

**\$289,900**

945 sq ft  
3 bedrooms  
1 baths

30355 Birchwood Drive  
Pequot Lakes MN 56472

Status: Active

**Description:**

3 BR/1 BT year round home within the gates of Breezy Point Resort! Enjoy golfing, boating, shopping, dining and all that the resort and surrounding Pequot Lakes area has to offer! This updated gem is filled with wonderful features including wood beams, skylights, beautiful wood interior, and wonderfully updated ceramic flooring throughout the home including updated kitchen, bath, etc. (see supplements for list of updates). The 2 car garage is insulated & heated with epoxy flooring. You'll love the spacious patio areas for all your outdoor entertaining!

**Additional Details:**

Year Built	1965
Lot Acres	0.19
Lot Dimensions	125x65
Garage Stalls	2
School District	186
Taxes	\$1,606
Taxes with Assessments	\$1,606
Tax Year	2026

**Additional Features:**

**Fuel:** Array **Heat:** Forced Air, In-Floor Heating

**Driving Directions:**

From 371 in Pequot Lakes go E on 11 towards Breezy Point, then go straight into the Breezy Point Resort gate, take 1st left on Birchwood Dr. home on left.



Listed By:  
RE/MAX Results - Nisswa

Affinity Real Estate Inc. participates in the Regional Multiple Listing Service of Minnesota, Inc Broker Reciprocity (sm) program, allowing us to display other broker's listings on our website. All properties are subject to prior sale, change or withdrawal.



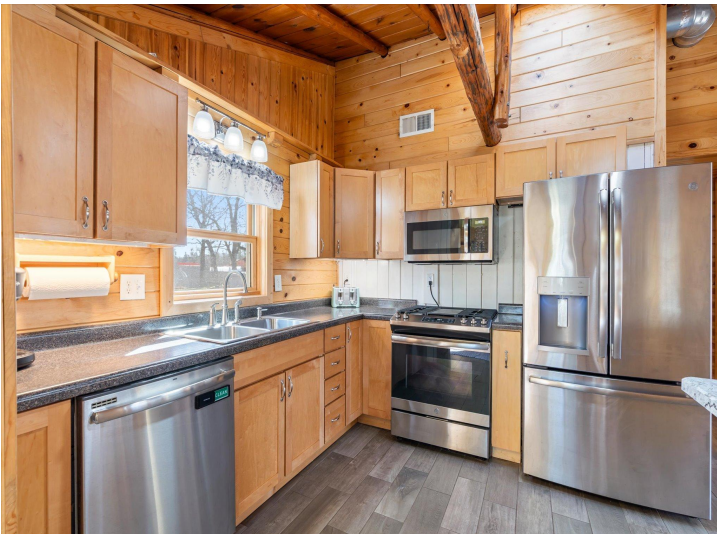
**Call Affinity Real Estate**

**218-237-3333**

**info@affinityrealestate.com**



**Affinity Real Estate - 600 Park Avenue South - Park Rapids MN 56470**



website: [www.AffinityRealEstate.com](http://www.AffinityRealEstate.com) | email: [info@affinityrealestate.com](mailto:info@affinityrealestate.com) | office: 218-237-3333 | fax: 218-237-3377

**Affinity**  
REAL ESTATE INC

**\$289,900**  
MLS 7060585 Residential  
30355 Birchwood Drive  
Pequot Lakes MN 56472



website: [www.AffinityRealEstate.com](http://www.AffinityRealEstate.com) | email: [info@affinityrealestate.com](mailto:info@affinityrealestate.com) | office: 218-237-3333 | fax:218-237-3377

**Affinity**  
REAL ESTATE INC

**\$289,900**  
MLS 7060585 Residential  
30355 Birchwood Drive  
Pequot Lakes MN 56472



website: [www.AffinityRealEstate.com](http://www.AffinityRealEstate.com) | email: [info@affinityrealestate.com](mailto:info@affinityrealestate.com) | office: 218-237-3333 | fax: 218-237-3377

**Affinity**  
REAL ESTATE INC

**\$289,900**  
MLS 7060585 Residential  
30355 Birchwood Drive  
Pequot Lakes MN 56472



website: [www.AffinityRealEstate.com](http://www.AffinityRealEstate.com) | email: [info@affinityrealestate.com](mailto:info@affinityrealestate.com) | office: 218-237-3333 | fax:218-237-3377



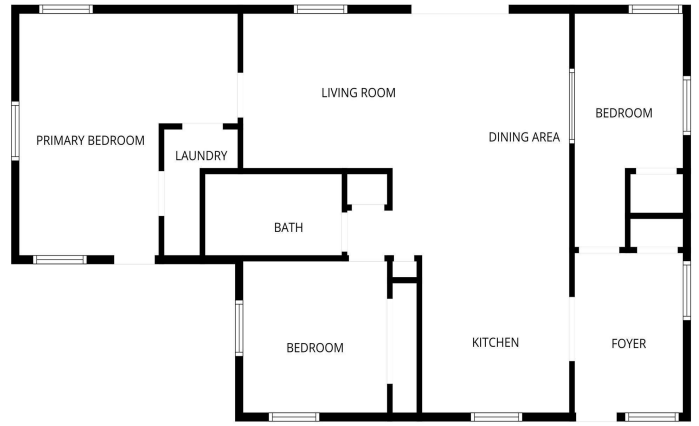
**\$289,900**  
MLS 7060585 Residential  
30355 Birchwood Drive  
Pequot Lakes MN 56472



website: [www.AffinityRealEstate.com](http://www.AffinityRealEstate.com) | email: [info@affinityrealestate.com](mailto:info@affinityrealestate.com) | office: 218-237-3333 | fax: 218-237-3377

**Affinity**  
REAL ESTATE INC

**\$289,900**  
MLS 7060585 Residential  
30355 Birchwood Drive  
Pequot Lakes MN 56472



website: [www.AffinityRealEstate.com](http://www.AffinityRealEstate.com) | email: [info@affinityrealestate.com](mailto:info@affinityrealestate.com) | office: 218-237-3333 | fax:218-237-3377



**\$289,900**  
MLS 7060585 Residential  
30355 Birchwood Drive  
Pequot Lakes MN 56472