



MLS 7060623 Residential

\$424,900

2,640 sq ft
4 bedrooms
2 baths

13910 Cherrywood Drive
Baxter MN 56425

Status: Active

Description:

Tucked into a desirable Baxter neighborhood, this well-maintained 4-bedroom, 2-bath home offers a spacious and functional layout in a convenient location. Situated on a corner lot with mature trees, the property features a refreshed yard and inviting outdoor spaces, including a large back deck that leads to a cozy fire pit area—perfect for entertaining or unwinding at the end of the day.

The main level welcomes you with vaulted ceilings and an open, airy feel, seamlessly connecting the kitchen, dining, and living areas. The deck is easily accessible from this space, making indoor-outdoor living simple and enjoyable.

Upstairs, you'll find two bedrooms along with a spacious primary bedroom featuring vaulted ceilings and a walk-in closet. The home also offers multiple living areas on the lower levels, providing flexibility for a family room, home office, recreation space, or whatever best fits your needs.

Additional highlights include a 3-car garage and ample storage throughout the home. Located near schools, parks, shopping, dining, and healthcare, with convenient access to major routes, this property offers a great balance of comfort, space, and accessibility. Schedule your showing today.

Additional Details:

Year Built	1999
Lot Acres	0.49
Lot Dimensions	178x120
Garage Stalls	3
School District	181
Taxes	\$3,363
Taxes with Assessments	\$3,388
Tax Year	2025

Additional Features:

Basement: Block, Daylight/Lookout Windows, Finished, Full, Storage Space **Fuel:** Array **Garage:** 3 **Heat:** Forced Air **Sewer:** City
Water: City Water/Connected **Air Conditioning:** Central

Listed By:
Coldwell Banker Realty

Affinity Real Estate, Inc. is a participant in the Real Estate Multiple Listing Service of Minnesota, Inc Broker Reciprocity (sm) program, allowing us to display other broker's listings on our website. All properties are subject to prior sale, change or withdrawal.



Call Affinity Real Estate

218-237-3333

info@affinityrealestate.com



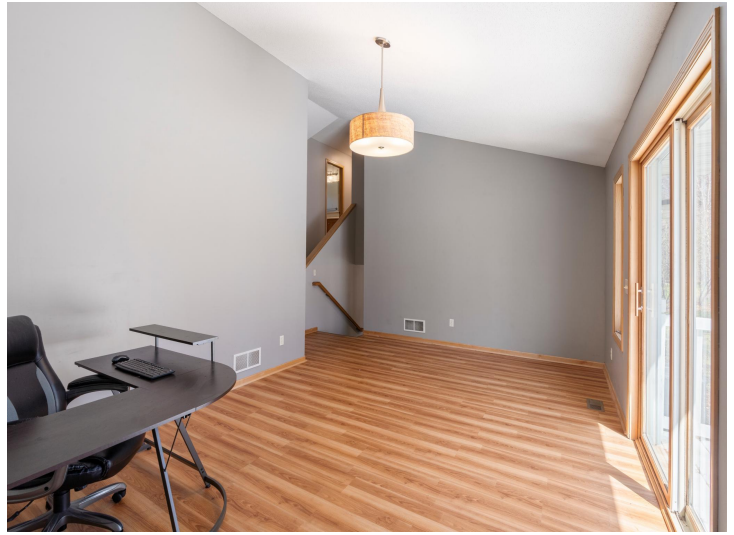
Affinity Real Estate - 600 Park Avenue South - Park Rapids MN 56470



website: www.AffinityRealEstate.com | email: info@affinityrealestate.com | office: 218-237-3333 | fax:218-237-3377



\$424,900
MLS 7060623 Residential
13910 Cherrywood Drive
Baxter MN 56425



website: www.AffinityRealEstate.com | email: info@affinityrealestate.com | office: 218-237-3333 | fax:218-237-3377



\$424,900
MLS 7060623 Residential
13910 Cherrywood Drive
Baxter MN 56425



website: www.AffinityRealEstate.com | email: info@affinityrealestate.com | office: 218-237-3333 | fax:218-237-3377

Affinity
REAL ESTATE INC

\$424,900
MLS 7060623 Residential
13910 Cherrywood Drive
Baxter MN 56425



website: www.AffinityRealEstate.com | email: info@affinityrealestate.com | office: 218-237-3333 | fax: 218-237-3377

Affinity
REAL ESTATE INC

\$424,900
MLS 7060623 Residential
13910 Cherrywood Drive
Baxter MN 56425



website: www.AffinityRealEstate.com | email: info@affinityrealestate.com | office: 218-237-3333 | fax:218-237-3377



\$424,900
MLS 7060623 Residential
13910 Cherrywood Drive
Baxter MN 56425



website: www.AffinityRealEstate.com | email: info@affinityrealestate.com | office: 218-237-3333 | fax:218-237-3377

Affinity
REAL ESTATE INC

\$424,900
MLS 7060623 Residential
13910 Cherrywood Drive
Baxter MN 56425



website: www.AffinityRealEstate.com | email: info@affinityrealestate.com | office: 218-237-3333 | fax:218-237-3377



\$424,900
MLS 7060623 Residential
13910 Cherrywood Drive
Baxter MN 56425