



MLS 7060776 Residential

\$475,000

4,003 sq ft
5 bedrooms
3 baths

922 Douglas Street
Alexandria MN 56308

Status: Active

Description:

Rarely does a home of this caliber become available in Alexandria's historic "Silk Stocking" district—offering a perfect blend of timeless elegance, peaceful surroundings, and functional family living. The thoughtfully designed kitchen will delight any gourmet cook, featuring abundant prep space, extensive cabinetry, upscale double ovens, and a gas cooktop. A large granite center island serves as the heart of the home—ideal for meal preparation, casual dining, or gathering with family and friends. From here, effortlessly entertain in the spacious formal dining room complete with a built-in buffet, or enjoy more relaxed meals in the inviting family room just steps away. The oversized family room provides the perfect setting for everyday living—whether hosting game nights, watching movies, or simply unwinding together. Upstairs, you'll find four generously sized bedrooms, each with ample closet space—an uncommon and highly desirable feature for a home of this era. The lower level expands your living options even further, offering an additional family room, a bedroom with egress window, bathroom, laundry area, game room, and abundant storage. One of the home's most captivating features is the magnificent front porch—an ideal place to relax, connect with neighbors and enjoy the charm of this beloved neighborhood. Practicality meets convenience with a heated, attached oversized two-car garage—perfect for Minnesota winters—along with an additional double-car garage for extra vehicles, hobbies or storage. Adding to its uniqueness, the property with its oversized lot offers dual access with full driveways from both Douglas Street and 10th Avenue. This is a truly special opportunity to own a distinctive home in one of Alexandria's most cherished neighborhoods.

Additional Details:

Year Built	1912
Lot Acres	0.41
Lot Dimensions	150 120 150 120
Garage Stalls	4
School District	206
Taxes	\$720
Taxes with Assessments	\$720
Tax Year	2026

Additional Features:

Egress Window(s), Finished, Storage Space Fuel: Array Garage: Attached Boiler, Ductless Mini-Split, Fireplace(s) Sewer: City
 Listed By: RE/MAX Results
 Air Conditioning: Ductless Mini-Split

Driving Real Estate Inc. participates in the Regional Multiple Listing Service of Minnesota, Inc Broker Reciprocity (sm) program, allowing us to display other broker's listings on our website. All properties are subject to prior sale, change or withdrawal.



Call Affinity Real Estate
218-237-3333
info@affinityrealestate.com



Affinity Real Estate - 600 Park Avenue South - Park Rapids MN 56470



website: www.AffinityRealEstate.com | email: info@affinityrealestate.com | office: 218-237-3333 | fax: 218-237-3377

Affinity
REAL ESTATE INC

\$475,000
MLS 7060776 Residential
922 Douglas Street
Alexandria MN 56308



website: www.AffinityRealEstate.com | email: info@affinityrealestate.com | office: 218-237-3333 | fax: 218-237-3377

Affinity
REAL ESTATE INC

\$475,000
MLS 7060776 Residential
922 Douglas Street
Alexandria MN 56308



website: www.AffinityRealEstate.com | email: info@affinityrealestate.com | office: 218-237-3333 | fax: 218-237-3377

Affinity
REAL ESTATE INC

\$475,000
MLS 7060776 Residential
922 Douglas Street
Alexandria MN 56308



website: www.AffinityRealEstate.com | email: info@affinityrealestate.com | office: 218-237-3333 | fax: 218-237-3377

Affinity
REAL ESTATE INC

\$475,000
MLS 7060776 Residential
922 Douglas Street
Alexandria MN 56308



website: www.AffinityRealEstate.com | email: info@affinityrealestate.com | office: 218-237-3333 | fax:218-237-3377

Affinity
REAL ESTATE INC

\$475,000
MLS 7060776 Residential
922 Douglas Street
Alexandria MN 56308



website: www.AffinityRealEstate.com | email: info@affinityrealestate.com | office: 218-237-3333 | fax:218-237-3377

Affinity
REAL ESTATE INC

\$475,000
MLS 7060776 Residential
922 Douglas Street
Alexandria MN 56308



website: www.AffinityRealEstate.com | email: info@affinityrealestate.com | office: 218-237-3333 | fax:218-237-3377

Affinity
REAL ESTATE INC

\$475,000
MLS 7060776 Residential
922 Douglas Street
Alexandria MN 56308



website: www.AffinityRealEstate.com | email: info@affinityrealestate.com | office: 218-237-3333 | fax:218-237-3377



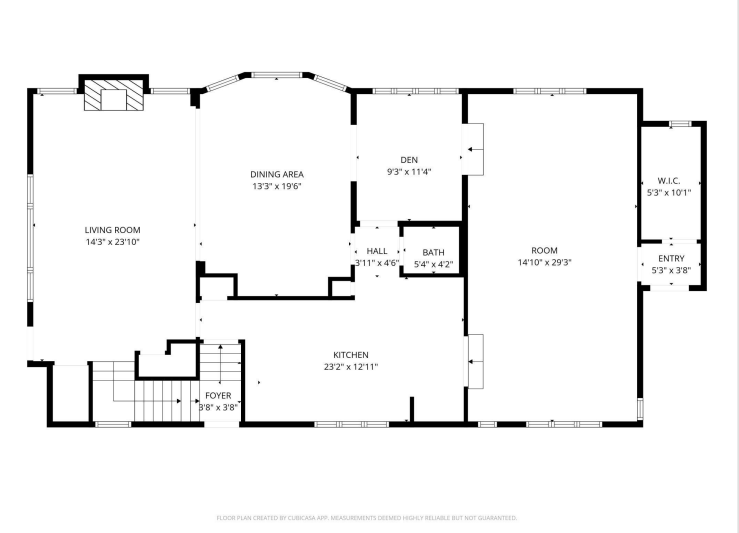
\$475,000
MLS 7060776 Residential
922 Douglas Street
Alexandria MN 56308



website: www.AffinityRealEstate.com | email: info@affinityrealestate.com | office: 218-237-3333 | fax: 218-237-3377

Affinity
REAL ESTATE INC

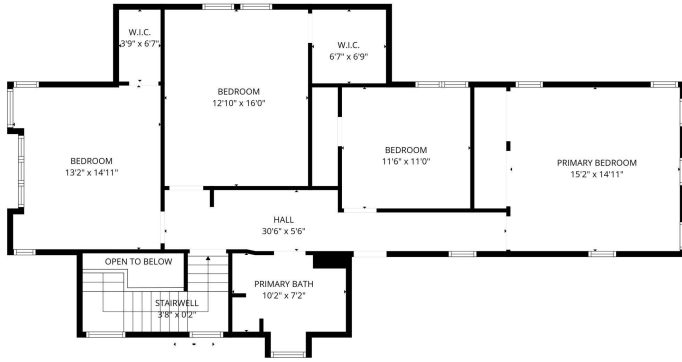
\$475,000
MLS 7060776 Residential
922 Douglas Street
Alexandria MN 56308



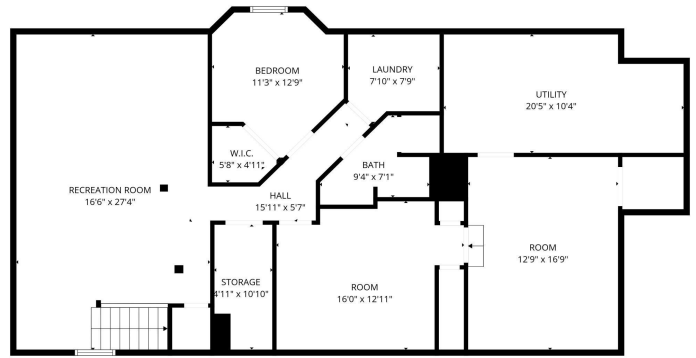
website: www.AffinityRealEstate.com | email: info@affinityrealestate.com | office: 218-237-3333 | fax: 218-237-3377



\$475,000
 MLS 7060776 Residential
 922 Douglas Street
 Alexandria MN 56308



FLOOR PLAN CREATED BY EUBICASA APP. MEASUREMENTS DEEMED HIGHLY RELIABLE BUT NOT GUARANTEED.



FLOOR PLAN CREATED BY EUBICASA APP. MEASUREMENTS DEEMED HIGHLY RELIABLE BUT NOT GUARANTEED.

website: www.AffinityRealEstate.com | email: info@affinityrealestate.com | office: 218-237-3333 | fax: 218-237-3377



\$475,000
 MLS 7060776 Residential
 922 Douglas Street
 Alexandria MN 56308