



MLS 7061011 Land

\$42,999

0.45 Acres
Raw Land

20957 Cole Avenue
Brainerd MN 56401

Status: Active

Description:

Discover the potential of this .45-acre level lot in the desirable Brainerd Lakes Area. This parcel features flat landscape - ideal for a variety of home designs, from a primary residence to a seasonal getaway. With electricity already connected, making it easier to bring your plans to life.

Situated in the heart of the highly sought-after location, you're just minutes from lakes, golf courses, trails, dining, and shopping - providing the perfect mix of convenience and outdoor lifestyle. Whether you're ready to build now or planning for the future, this property presents a strong opportunity to own land in one of Minnesota's most desirable recreational markets.

Additional Details:

Lot Acres	0.45
Lot Dimensions	150x131
School District	181
Taxes	\$242
Taxes with Assessments	\$242
Tax Year	2026

Additional Features:

Driving Directions:

From MN-371 N turn left onto Columbo Rd. to left onto Cole Ave.



Listed By:
Weichert REALTORS Tower Properties

Affinity Real Estate Inc. participates in the Regional Multiple Listing Service of Minnesota, Inc Broker Reciprocity (sm) program, allowing us to display other broker's listings on our website. All properties are subject to prior sale, change or withdrawal.



Call Affinity Real Estate

218-237-3333

info@affinityrealestate.com



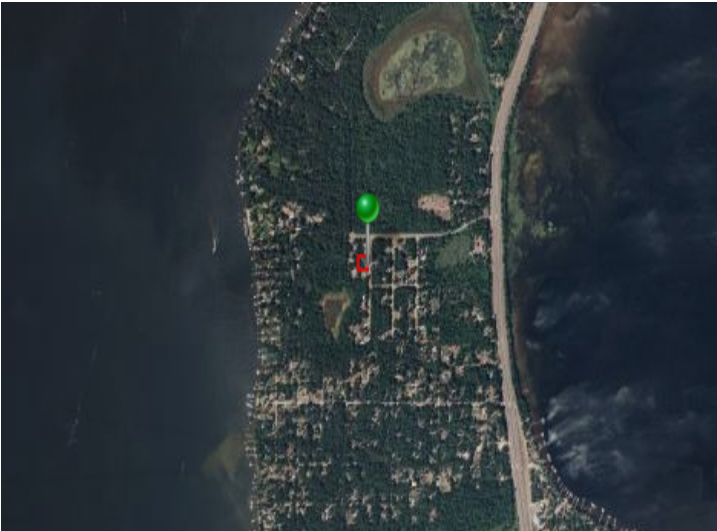
Affinity Real Estate - 600 Park Avenue South - Park Rapids MN 56470



website: www.AffinityRealEstate.com | email: info@affinityrealestate.com | office: 218-237-3333 | fax: 218-237-3377

Affinity
REAL ESTATE INC

\$42,999
MLS 7061011 Land
20957 Cole Avenue
Brainerd MN 56401



website: www.AffinityRealEstate.com | email: info@affinityrealestate.com | office: 218-237-3333 | fax:218-237-3377



\$42,999
MLS 7061011 Land
20957 Cole Avenue
Brainerd MN 56401