



MLS 7061019 Residential

\$389,900

2,600 sq ft
4 bedrooms
3 baths

28445 230TH Street
Akeley MN 56433

Status: Active

Description:

This charming 4-bedroom, 3-bath home is perfectly situated on a peaceful 10-acre parcel, offering a blend of comfort, space and natural beauty. Located just ½ mile from the main highway and minutes from Nevis, Akeley, and numerous lakes, this property provides the ideal setting for a quiet country lifestyle with convenient access to nearby amenities. The main level features an open-concept kitchen, dining, and living area with stunning vaulted pine ceilings. The kitchen is a chef's dream with hickory cabinets, quartz countertops, a gas stove, and all appliances included. The spacious primary bedroom includes a ¾ bath and a walk-in closet. You'll also find main-floor laundry and an attached double garage with breezeway access for added convenience. The lower level boasts two large bedrooms, a spacious family room, and a versatile flex area—ideal for hobbies, a workout space, or a home office. Outdoors, enjoy 10 acres of serene countryside, including approximately 5 wooded acres perfect for exploring or enjoying nature. There's ample space for gardens, additional landscaping, or simply relaxing in your private retreat. Located just ½ mile from the Heartland Trail, this home is a haven for outdoor enthusiasts.

Additional Details:

Year Built	2023
Lot Acres	10
Lot Dimensions	329 x 1313
Garage Stalls	2
School District	113
Taxes	\$1,483
Taxes with Assessments	\$1,728
Tax Year	2026

Additional Features:

Basement: Daylight/Lookout Windows, Egress Window(s), Finished, Full **Fuel:** Array **Garage:** 2 **Heat:** Forced Air **Sewer:** Septic System Compliant - Yes, Tank with Drainage Field **Water:** 4-Inch Submersible, Private **Air Conditioning:** Central Air

Driving Directions:

From Park Rapids - Head E on Hwy 34 15 miles and turn right onto 230th Street, proceed .3 mi and property will be on your right.



Listed By:
Affinity Real Estate Inc.

Affinity Real Estate Inc. participates in the Regional Multiple Listing Service of Minnesota, Inc Broker Reciprocity (sm) program, allowing us to display other broker's listings on our website. All properties are subject to prior sale, change or withdrawal.



Call Affinity Real Estate

218-237-3333

info@affinityrealestate.com



Affinity Real Estate - 600 Park Avenue South - Park Rapids MN 56470



website: www.AffinityRealEstate.com | email: info@affinityrealestate.com | office: 218-237-3333 | fax:218-237-3377



\$389,900
MLS 7061019 Residential
28445 230TH Street
Akeley MN 56433



website: www.AffinityRealEstate.com | email: info@affinityrealestate.com | office: 218-237-3333 | fax:218-237-3377



\$389,900
MLS 7061019 Residential
28445 230TH Street
Akeley MN 56433



website: www.AffinityRealEstate.com | email: info@affinityrealestate.com | office: 218-237-3333 | fax:218-237-3377



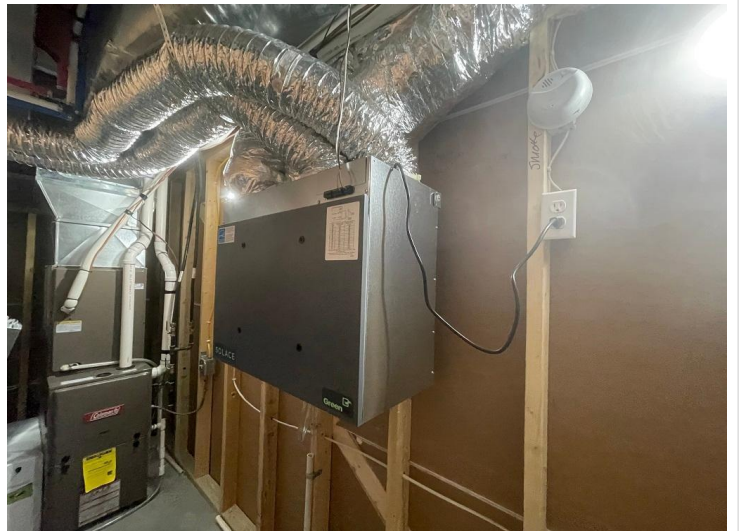
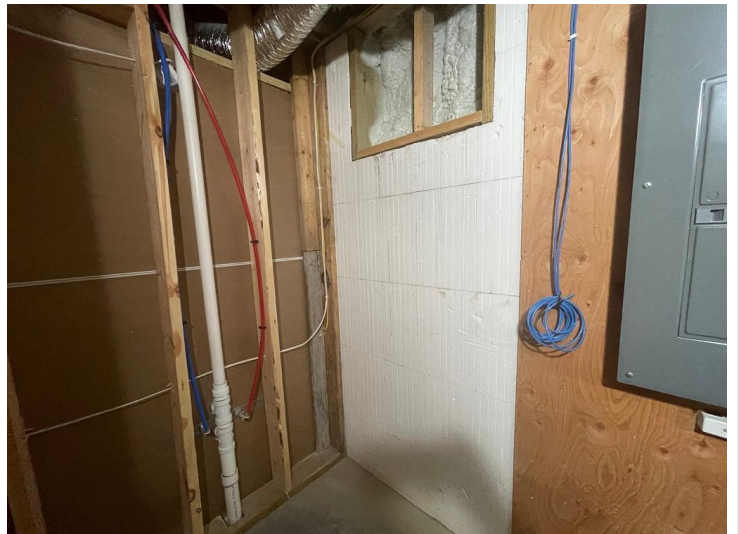
\$389,900
MLS 7061019 Residential
28445 230TH Street
Akeley MN 56433



website: www.AffinityRealEstate.com | email: info@affinityrealestate.com | office: 218-237-3333 | fax:218-237-3377

Affinity
REAL ESTATE INC

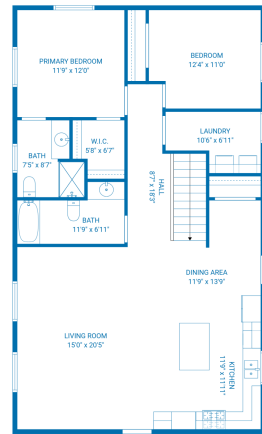
\$389,900
MLS 7061019 Residential
28445 230TH Street
Akeley MN 56433



website: www.AffinityRealEstate.com | email: info@affinityrealestate.com | office: 218-237-3333 | fax:218-237-3377



\$389,900
MLS 7061019 Residential
28445 230TH Street
Akeley MN 56433



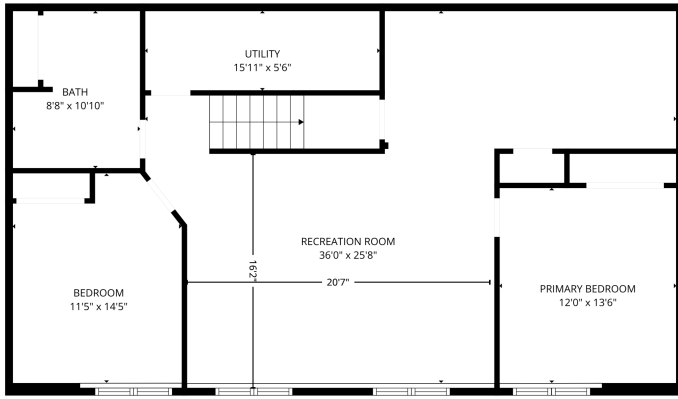
TOTAL: 1254 sq. ft.
 FLOOR 1: 1254 sq. ft.
 EXCLUDED AREAS: WALLS: 75 sq. ft.

FLOOR PLAN CREATED BY CIRCULAR WITH MEASUREMENTS TAKEN FROM HOUSE. MEASUREMENTS MAY VARY SLIGHTLY FROM ACTUAL.

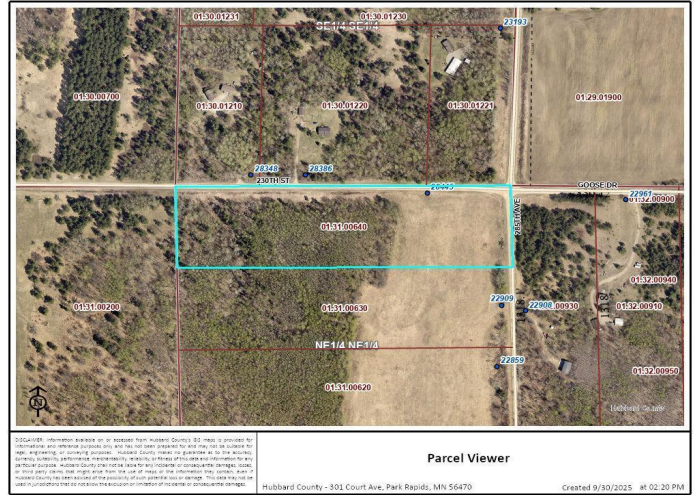
website: www.AffinityRealEstate.com | email: info@affinityrealestate.com | office: 218-237-3333 | fax: 218-237-3377



\$389,900
 MLS 7061019 Residential
 28445 230TH Street
 Akeley MN 56433



FLOOR PLAN CREATED BY GURICASA APP. MEASUREMENTS DEEMED HIGHLY RELIABLE BUT NOT GUARANTEED.



Parcel Viewer
 Hubbard County - 303 Court Ave, Park Rapids, MN 56470
 Created 9/30/2025 at 02:20 PM

website: www.AffinityRealEstate.com | email: info@affinityrealestate.com | office: 218-237-3333 | fax: 218-237-3377



\$389,900
 MLS 7061019 Residential
 28445 230TH Street
 Akeley MN 56433