



MLS 7061057 Lake Home

**\$1,880,000**

5,305 sq ft  
5 bedrooms  
6 baths

27620 Island View Drive  
Park Rapids MN 56470

Waterfront: Mantrap

Status: Coming Soon

**Description:**

Experience a level of luxury and recreation rarely found in the Northwoods. Set on the pristine shores of Big Mantrap Lake with 300 feet of shoreline, you will find a sophisticated main residence and a next-level sports complex. The home features 5,300 finished sq ft with 5 bedrooms, 4+ baths, and a grand display of windows that perfectly integrates the indoor and outdoor living spaces. High-end finishes include custom hickory cabinetry, granite countertops, and rich hardwoods, while luxury amenities like two fireplaces, a sauna, hot tub, and expansive multi-level decking provide the perfect environment for relaxation. The home also includes high-speed fiber optic internet for seamless connectivity. The crown jewel of this property is the 8,600 sq ft, climate-controlled, multi-use recreation center. It was built by Kraus-Anderson to the highest commercial standards. Designed for health, wellness and the ultimate enthusiast. It features a full-size court for basketball, tennis, pickleball and volleyball plus a retractable batting cage and synthetic ice for hockey. The facility also includes a dedicated workout space, viewing area, kitchenette, and half bath. Located on a lake renowned for its limited development, crystal-clear water, and world-class Muskie fishing. This property offers unparalleled privacy with the convenience of blacktop access and no dirt roads. Truly a captivating estate where luxury and adventure meet. Be sure to check out the video.

**Additional Details:**

Year Built	1993
Lot Acres	2.62
Lot Dimensions	300 x 355 x 316 x 404
Garage Stalls	3
School District	309
Taxes	\$14,585
Taxes with Assessments	\$14,830
Tax Year	2026

**Additional Features:**

**Basement:** Egress Window(s), Finished, Full, Walkout **Fuel:** Propane **Garage:** 3 **Heat:** Forced Air, Fireplace(s), In-Floor Heating **Sewer:** Private Sewer, Septic System Compliant - Yes, Tank with Drainage Field **Water:** Drilled, Private, Well **Air Conditioning:** Central Air

**Driving Directions:**



Head E on 7 to a left on Island View Drive. Proceed to property on right. Affinity Real Estate Inc.



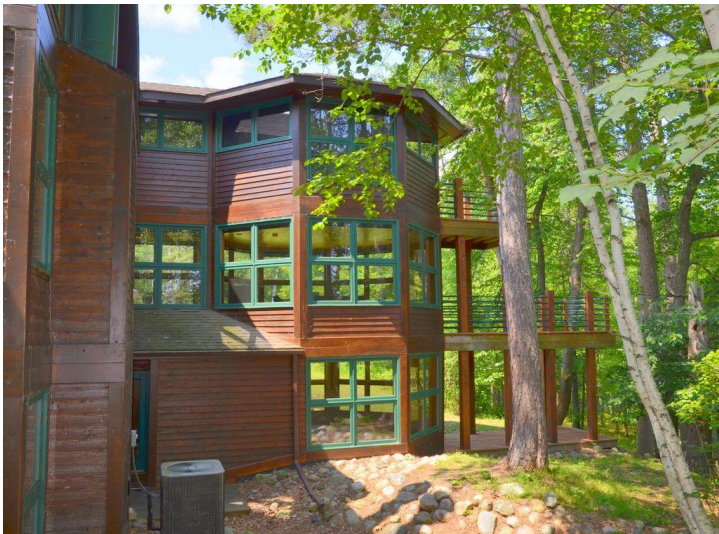
**Call Affinity Real Estate**

**218-237-3333**

**info@affinityrealestate.com**



**Affinity Real Estate - 600 Park Avenue South - Park Rapids MN 56470**



website: [www.AffinityRealEstate.com](http://www.AffinityRealEstate.com) | email: [info@affinityrealestate.com](mailto:info@affinityrealestate.com) | office: 218-237-3333 | fax: 218-237-3377

**Affinity**  
REAL ESTATE INC

**\$1,880,000**  
MLS 7061057 Lake Home  
27620 Island View Drive  
Park Rapids MN 56470



website: [www.AffinityRealEstate.com](http://www.AffinityRealEstate.com) | email: [info@affinityrealestate.com](mailto:info@affinityrealestate.com) | office: 218-237-3333 | fax:218-237-3377



**\$1,880,000**  
MLS 7061057 Lake Home  
27620 Island View Drive  
Park Rapids MN 56470



website: [www.AffinityRealEstate.com](http://www.AffinityRealEstate.com) | email: [info@affinityrealestate.com](mailto:info@affinityrealestate.com) | office: 218-237-3333 | fax: 218-237-3377

**Affinity**  
REAL ESTATE INC

**\$1,880,000**  
MLS 7061057 Lake Home  
27620 Island View Drive  
Park Rapids MN 56470



website: [www.AffinityRealEstate.com](http://www.AffinityRealEstate.com) | email: [info@affinityrealestate.com](mailto:info@affinityrealestate.com) | office: 218-237-3333 | fax:218-237-3377

**Affinity**  
REAL ESTATE INC

**\$1,880,000**  
MLS 7061057 Lake Home  
27620 Island View Drive  
Park Rapids MN 56470



website: [www.AffinityRealEstate.com](http://www.AffinityRealEstate.com) | email: [info@affinityrealestate.com](mailto:info@affinityrealestate.com) | office: 218-237-3333 | fax:218-237-3377

**Affinity**  
REAL ESTATE INC

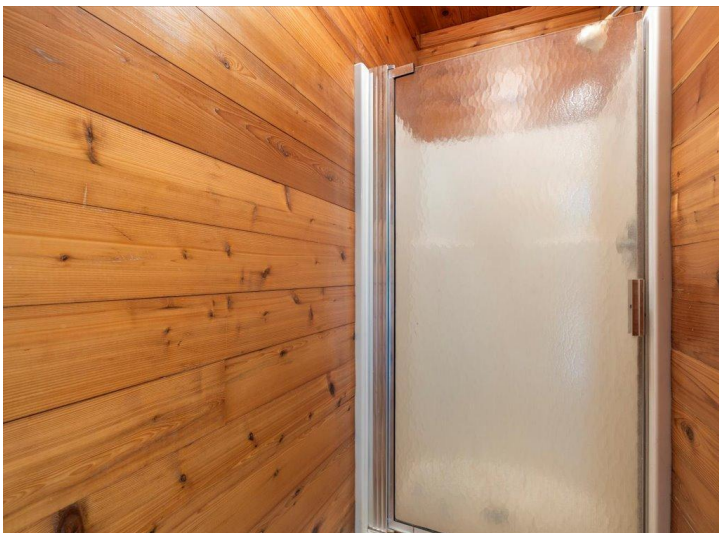
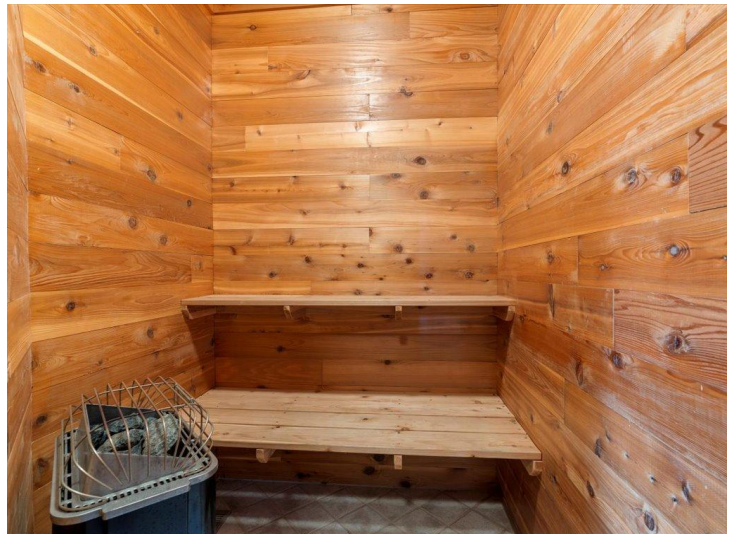
**\$1,880,000**  
MLS 7061057 Lake Home  
27620 Island View Drive  
Park Rapids MN 56470



website: [www.AffinityRealEstate.com](http://www.AffinityRealEstate.com) | email: [info@affinityrealestate.com](mailto:info@affinityrealestate.com) | office: 218-237-3333 | fax:218-237-3377

**Affinity**  
REAL ESTATE INC

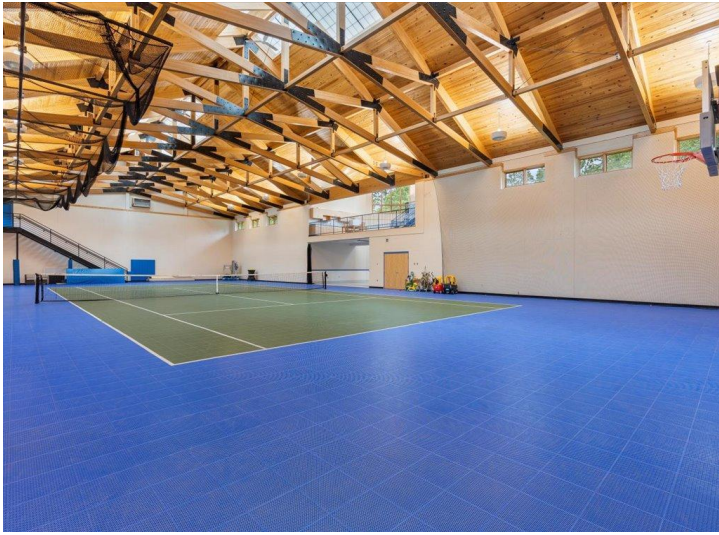
**\$1,880,000**  
MLS 7061057 Lake Home  
27620 Island View Drive  
Park Rapids MN 56470



website: [www.AffinityRealEstate.com](http://www.AffinityRealEstate.com) | email: [info@affinityrealestate.com](mailto:info@affinityrealestate.com) | office: 218-237-3333 | fax:218-237-3377



**\$1,880,000**  
MLS 7061057 Lake Home  
27620 Island View Drive  
Park Rapids MN 56470



website: [www.AffinityRealEstate.com](http://www.AffinityRealEstate.com) | email: [info@affinityrealestate.com](mailto:info@affinityrealestate.com) | office: 218-237-3333 | fax:218-237-3377



**\$1,880,000**  
MLS 7061057 Lake Home  
27620 Island View Drive  
Park Rapids MN 56470



website: [www.AffinityRealEstate.com](http://www.AffinityRealEstate.com) | email: [info@affinityrealestate.com](mailto:info@affinityrealestate.com) | office: 218-237-3333 | fax:218-237-3377



**\$1,880,000**  
MLS 7061057 Lake Home  
27620 Island View Drive  
Park Rapids MN 56470