



MLS 7061233 Residential

\$275,000

1,911 sq ft
3 bedrooms
2 baths

11391 Allord Street
Brainerd MN 56401

Status: Active

Description:

Spacious One-Level Living on a Generous Lot

Enjoy the perfect blend of comfort and space in this well-designed 3-bedroom, 2-bathroom home situated on a .46-acre lot on the outskirts of town. Offering convenient main-level living, all three bedrooms are thoughtfully located on one level—ideal for ease and functionality.

The main floor features a welcoming layout with plenty of natural light, creating a warm and inviting atmosphere for everyday living. Downstairs, you'll find a large family room perfect for entertaining, movie nights, or relaxing, along with a versatile office or flex space that can adapt to your needs—whether it's a home office, gym, or hobby room.

Additional highlights include an attached 2-car garage for convenience and extra storage, plus ample outdoor space with room to enjoy the peaceful surroundings, garden, or expand.

If you're looking for space, flexibility, and a quieter setting just minutes from town, this home checks all the boxes.

Additional Details:

| | |
|------------------------|-----------------|
| Year Built | 1977 |
| Lot Acres | 0.46 |
| Lot Dimensions | 198x100x199x100 |
| Garage Stalls | 2 |
| School District | 181 |
| Taxes | \$1,427 |
| Taxes with Assessments | \$1,452 |
| Tax Year | 2026 |

Additional Features:

Fuel: Array **Heat:** Baseboard, Dual Fuel/Off Peak, Forced Air

Driving Directions:

In Brainerd from the intersection of 18 & 25 go North on 25 to Right on Red Pine Rd to left on Eide Rd. Follow Eide to right on Allord St and house on Right.



Listed By:
LPT Realty, LLC.

Affinity Real Estate Inc. participates in the Regional Multiple Listing Service of Minnesota, Inc Broker Reciprocity (sm) program, allowing us to display other broker's listings on our website. All properties are subject to prior sale, change or withdrawal.



Call Affinity Real Estate

218-237-3333

info@affinityrealestate.com



Affinity Real Estate - 600 Park Avenue South - Park Rapids MN 56470



website: www.AffinityRealEstate.com | email: info@affinityrealestate.com | office: 218-237-3333 | fax: 218-237-3377

Affinity
REAL ESTATE INC

\$275,000
MLS 7061233 Residential
11391 Allord Street
Brainerd MN 56401



website: www.AffinityRealEstate.com | email: info@affinityrealestate.com | office: 218-237-3333 | fax: 218-237-3377

Affinity
REAL ESTATE INC

\$275,000
MLS 7061233 Residential
11391 Allord Street
Brainerd MN 56401



website: www.AffinityRealEstate.com | email: info@affinityrealestate.com | office: 218-237-3333 | fax: 218-237-3377

Affinity
REAL ESTATE INC

\$275,000
MLS 7061233 Residential
11391 Allord Street
Brainerd MN 56401



website: www.AffinityRealEstate.com | email: info@affinityrealestate.com | office: 218-237-3333 | fax:218-237-3377



\$275,000
MLS 7061233 Residential
11391 Allord Street
Brainerd MN 56401



website: www.AffinityRealEstate.com | email: info@affinityrealestate.com | office: 218-237-3333 | fax: 218-237-3377

Affinity
REAL ESTATE INC

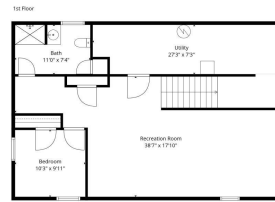
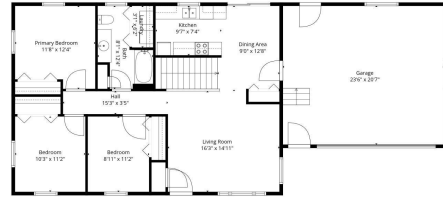
\$275,000
MLS 7061233 Residential
11391 Allord Street
Brainerd MN 56401



website: www.AffinityRealEstate.com | email: info@affinityrealestate.com | office: 218-237-3333 | fax: 218-237-3377

Affinity
REAL ESTATE INC

\$275,000
MLS 7061233 Residential
11391 Allord Street
Brainerd MN 56401



Basement

TOTAL: 1855 sq. ft.
 Basement: 791 sq. ft., 1st floor: 1064 sq. ft.
 EXCLUDED AREAS: UTILITY: 153 sq. ft., GARAGE: 484 sq. ft., WALLS: 167 sq. ft.

Measurements are Estimates And Are Not A Replacement For A Licensed Surveyor

website: www.AffinityRealEstate.com | email: info@affinityrealestate.com | office: 218-237-3333 | fax: 218-237-3377



\$275,000
 MLS 7061233 Residential
 11391 Allord Street
 Brainerd MN 56401