



MLS 7061430 Residential

**\$305,000**

1,633 sq ft  
3 bedrooms  
2 baths

2008 Whiting Road  
Bemidji MN 56601

Status: Active

**Description:**

Welcome to Wheatfield development!

This clean 3 bedroom 2 bath home is move in ready. The home has a spacious feel with vaulted ceiling and large windows with a beautiful view of the backyard. Dining room leads to the back patio where sellers have added a lovely tiled border wall. The home owners have upgraded the property with an irrigation system.

Enjoy the full grown trees surrounding the property. Wheatfield development has walking trail and playground area.

Great Location is minutes from town with all paved roads.

Come see in person this beauty.

**Additional Details:**

Year Built	2016
Lot Acres	0.36
Lot Dimensions	90x175
Garage Stalls	2
School District	31
Taxes	\$3,066
Taxes with Assessments	\$3,066
Tax Year	2026

**Additional Features:**

**Basement:** None **Fuel:** Array **Garage:** 2 **Heat:** Forced Air **Sewer:** Private Sewer **Water:** Private, Well **Air Conditioning:** Central Air

**Driving Directions:**

From Bemidji take Irvine Ave NW to Whiting Rd NW. Left on Whiting Rd to 2008 (Wheatfield). Left into Wheatfield, #40 is the first home on your left.



Listed By:  
Better Homes and Gardens Real Estate First Cho

Affinity Real Estate Inc. participates in the Regional Multiple Listing Service of Minnesota, Inc Broker Reciprocity (sm) program, allowing us to display other broker's listings on our website. All properties are subject to prior sale, change or withdrawal.



**Call Affinity Real Estate**

**218-237-3333**

**info@affinityrealestate.com**



**Affinity Real Estate - 600 Park Avenue South - Park Rapids MN 56470**



website: [www.AffinityRealEstate.com](http://www.AffinityRealEstate.com) | email: [info@affinityrealestate.com](mailto:info@affinityrealestate.com) | office: 218-237-3333 | fax:218-237-3377

**Affinity**  
REAL ESTATE INC

**\$305,000**  
MLS 7061430 Residential  
2008 Whiting Road  
Bemidji MN 56601



website: [www.AffinityRealEstate.com](http://www.AffinityRealEstate.com) | email: [info@affinityrealestate.com](mailto:info@affinityrealestate.com) | office: 218-237-3333 | fax: 218-237-3377

**Affinity**  
REAL ESTATE INC

**\$305,000**  
MLS 7061430 Residential  
2008 Whiting Road  
Bemidji MN 56601



website: [www.AffinityRealEstate.com](http://www.AffinityRealEstate.com) | email: [info@affinityrealestate.com](mailto:info@affinityrealestate.com) | office: 218-237-3333 | fax: 218-237-3377

**Affinity**  
REAL ESTATE INC

**\$305,000**  
MLS 7061430 Residential  
2008 Whiting Road  
Bemidji MN 56601



website: [www.AffinityRealEstate.com](http://www.AffinityRealEstate.com) | email: [info@affinityrealestate.com](mailto:info@affinityrealestate.com) | office: 218-237-3333 | fax:218-237-3377



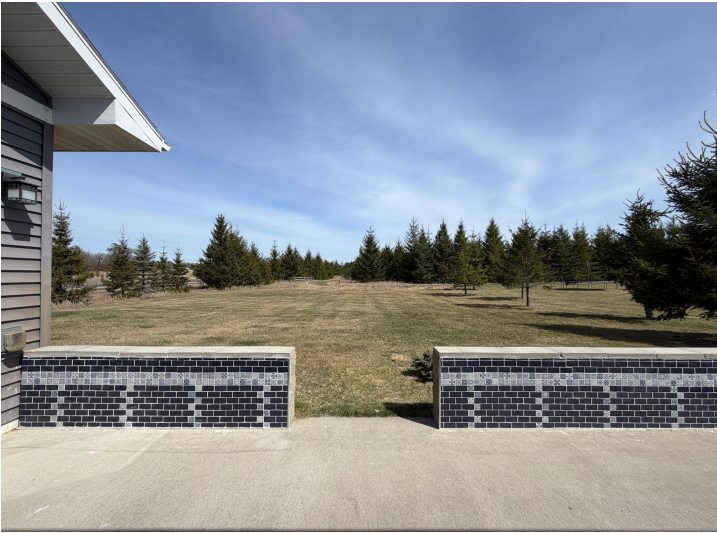
**\$305,000**  
MLS 7061430 Residential  
2008 Whiting Road  
Bemidji MN 56601



website: [www.AffinityRealEstate.com](http://www.AffinityRealEstate.com) | email: [info@affinityrealestate.com](mailto:info@affinityrealestate.com) | office: 218-237-3333 | fax:218-237-3377



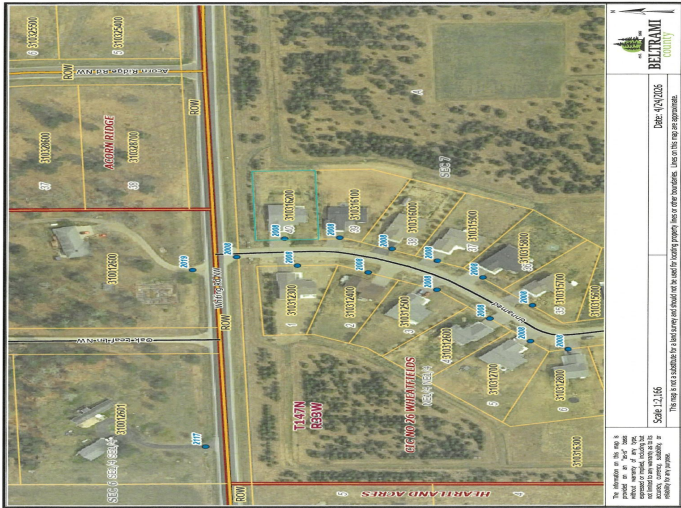
**\$305,000**  
MLS 7061430 Residential  
2008 Whiting Road  
Bemidji MN 56601



website: [www.AffinityRealEstate.com](http://www.AffinityRealEstate.com) | email: [info@affinityrealestate.com](mailto:info@affinityrealestate.com) | office: 218-237-3333 | fax: 218-237-3377

**Affinity**  
REAL ESTATE INC

**\$305,000**  
MLS 7061430 Residential  
2008 Whiting Road  
Bemidji MN 56601



website: [www.AffinityRealEstate.com](http://www.AffinityRealEstate.com) | email: [info@affinityrealestate.com](mailto:info@affinityrealestate.com) | office: 218-237-3333 | fax: 218-237-3377



**\$305,000**  
 MLS 7061430 Residential  
 2008 Whiting Road  
 Bemidji MN 56601