



MLS 7061441 Residential

**\$109,900**

1,260 sq ft  
4 bedrooms  
2 baths

12888 Sceaux Trail  
Pillager MN 56473

Status: Active

**Description:**

4 bedroom/2 bath home on large lot in country setting. Huge detached, 3 car, insulated garage. Mature trees around perimeter for privacy. 2 large decks.

**Additional Details:**

Year Built	1977
Lot Acres	0.086
Lot Dimensions	189x210x188x218
Garage Stalls	3
School District	116
Taxes	\$388
Taxes with Assessments	\$474
Tax Year	2026

**Additional Features:**

**Basement:** None **Fuel:** Array **Garage:** 3 **Heat:** Forced Air **Sewer:** Private Sewer, Tank with Drainage Field **Water:** 4-Inch Submersible, Well **Air Conditioning:** Window Unit(s)

**Driving Directions:**

From Baxter, W on Hwy 210, R on Upper Sylvan Lake Rd, R on Sceauxville Dr. SW. Property on the corner of Sceauxville Dr & Sceaux Trail SW.



Listed By:  
RE/MAX Results - Nisswa

Affinity Real Estate Inc. participates in the Regional Multiple Listing Service of Minnesota, Inc Broker Reciprocity (sm) program, allowing us to display other broker's listings on our website. All properties are subject to prior sale, change or withdrawal.



Call Affinity Real Estate

**218-237-3333**

[info@affinityrealestate.com](mailto:info@affinityrealestate.com)



Affinity Real Estate - 600 Park Avenue South - Park Rapids MN 56470



website: [www.AffinityRealEstate.com](http://www.AffinityRealEstate.com) | email: [info@affinityrealestate.com](mailto:info@affinityrealestate.com) | office: 218-237-3333 | fax:218-237-3377



**\$109,900**  
MLS 7061441 Residential  
12888 Sceaux Trail  
Pillager MN 56473



website: [www.AffinityRealEstate.com](http://www.AffinityRealEstate.com) | email: [info@affinityrealestate.com](mailto:info@affinityrealestate.com) | office: 218-237-3333 | fax:218-237-3377



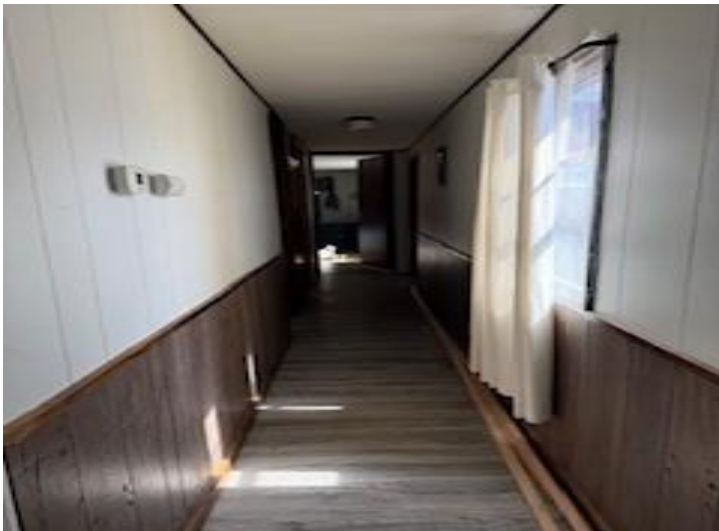
**\$109,900**  
MLS 7061441 Residential  
12888 Sceaux Trail  
Pillager MN 56473



website: [www.AffinityRealEstate.com](http://www.AffinityRealEstate.com) | email: [info@affinityrealestate.com](mailto:info@affinityrealestate.com) | office: 218-237-3333 | fax:218-237-3377



**\$109,900**  
MLS 7061441 Residential  
12888 Sceaux Trail  
Pillager MN 56473



website: [www.AffinityRealEstate.com](http://www.AffinityRealEstate.com) | email: [info@affinityrealestate.com](mailto:info@affinityrealestate.com) | office: 218-237-3333 | fax:218-237-3377



**\$109,900**  
MLS 7061441 Residential  
12888 Sceaux Trail  
Pillager MN 56473

website: [www.AffinityRealEstate.com](http://www.AffinityRealEstate.com) | email: [info@affinityrealestate.com](mailto:info@affinityrealestate.com) | office: 218-237-3333 | fax:218-237-3377



**\$109,900**  
MLS 7061441 Residential  
12888 Sceaux Trail  
Pillager MN 56473