



MLS 7061514 Residential

\$450,000

1,277 sq ft
3 bedrooms
2 baths

22019 Whitetail Drive
Emily MN 56447

Status: Active

Description:

Enjoy lake life on the sought-after Mary/Emily chain in Emily, MN. This inviting cabin features 3 bedrooms and 2 bathrooms, including a private primary suite. Take in beautiful channel views from the spacious deck or relax in the three-season porch— perfect for enjoying summer evenings without the bugs.

The property offers a gradual walk down to the waterfront, making access easy for all ages. Located on a quiet channel, you'll appreciate calm waters ideal for your dock, lift, and boat, along with abundant wildlife right outside your door. Fishing enthusiasts will love the excellent fishing both off the dock and throughout the chain.

Adventure is just as close as relaxation, with ATV trails accessible directly from the driveway. Plus, you're conveniently located near local bars, restaurants, and grocery options—everything you need for the perfect getaway or year-round retreat.

Additional Details:

Year Built	2002
Lot Acres	1.44
Lot Dimensions	Irregular
School District	182
Taxes	\$1,790
Taxes with Assessments	\$1,790
Tax Year	2025

Additional Features:

Basement: None **Fuel:** Array **Heat:** Forced Air **Sewer:** Septic System Compliant - Yes, Tank with Drainage Field **Water:** Well **Air Conditioning:** None

Driving Directions:

Hwy 1 to Whitetail Dr.



Listed By:
RE/MAX Advantage Plus

Affinity Real Estate Inc. participates in the Regional Multiple Listing Service of Minnesota, Inc Broker Reciprocity (sm) program, allowing us to display other broker's listings on our website. All properties are subject to prior sale, change or withdrawal.



Call Affinity Real Estate

218-237-3333

info@affinityrealestate.com



Affinity Real Estate - 600 Park Avenue South - Park Rapids MN 56470



website: www.AffinityRealEstate.com | email: info@affinityrealestate.com | office: 218-237-3333 | fax:218-237-3377



\$450,000
MLS 7061514 Residential
22019 Whitetail Drive
Emily MN 56447



website: www.AffinityRealEstate.com | email: info@affinityrealestate.com | office: 218-237-3333 | fax:218-237-3377



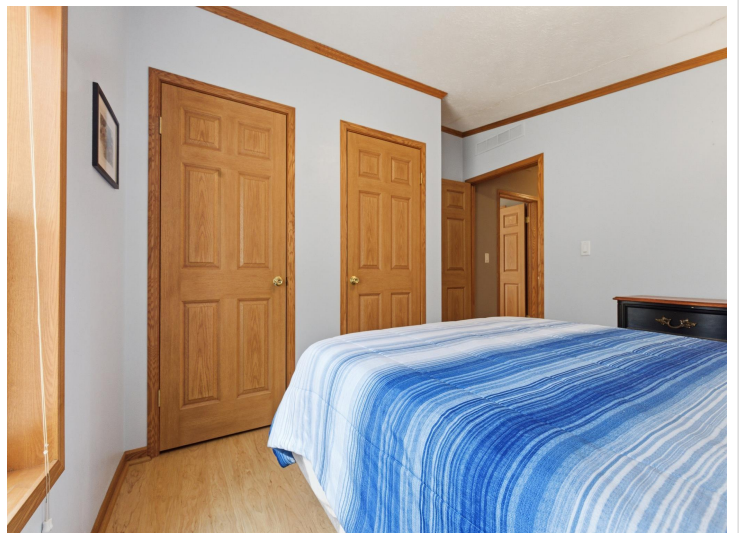
\$450,000
MLS 7061514 Residential
22019 Whitetail Drive
Emily MN 56447



website: www.AffinityRealEstate.com | email: info@affinityrealestate.com | office: 218-237-3333 | fax:218-237-3377



\$450,000
MLS 7061514 Residential
22019 Whitetail Drive
Emily MN 56447



website: www.AffinityRealEstate.com | email: info@affinityrealestate.com | office: 218-237-3333 | fax:218-237-3377

Affinity
REAL ESTATE INC

\$450,000
MLS 7061514 Residential
22019 Whitetail Drive
Emily MN 56447



website: www.AffinityRealEstate.com | email: info@affinityrealestate.com | office: 218-237-3333 | fax:218-237-3377

Affinity
REAL ESTATE INC

\$450,000
MLS 7061514 Residential
22019 Whitetail Drive
Emily MN 56447



website: www.AffinityRealEstate.com | email: info@affinityrealestate.com | office: 218-237-3333 | fax:218-237-3377

Affinity
REAL ESTATE INC

\$450,000
MLS 7061514 Residential
22019 Whitetail Drive
Emily MN 56447



FLOOR PLAN CREATED BY CURICASA APP. MEASUREMENTS DEEMED HIGHLY RELIABLE BUT NOT GUARANTEED.

website: www.AffinityRealEstate.com | email: info@affinityrealestate.com | office: 218-237-3333 | fax: 218-237-3377



\$450,000
MLS 7061514 Residential
22019 Whitetail Drive
Emily MN 56447