



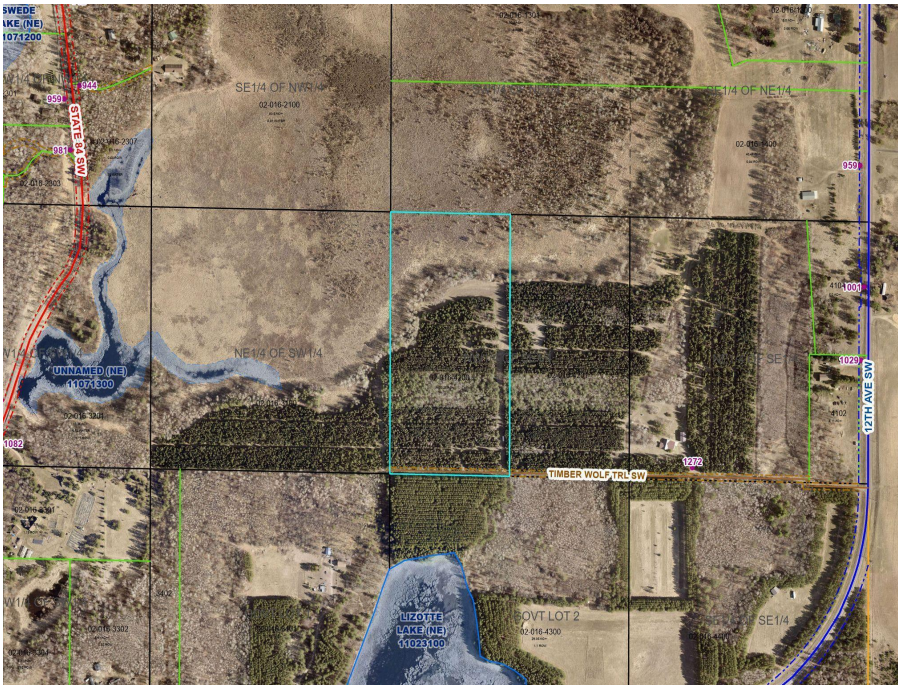
MLS 7061614 Land

\$139,500

20.25 Acres
Raw Land

TBD Timber Wolf Trail
Pine River MN 56435

Status: Active



Description:

Nestled along the quiet stretch of Timber Wolf Trail just outside Pine River, MN, this sprawling 20-acre property carries the charm of its past life as a Christmas tree farm. Rows of mature evergreens still stand tall, their deep green needles whispering in the breeze and filling the air with a faint, resinous scent. The land gently rolls, offering a mix of open clearings and shaded groves, with soft carpets of pine needles underfoot. In winter, the snow settles gracefully on the branches, evoking postcard-perfect scenes, while in summer, the trees provide cool shelter for deer and songbirds. With its rich soil, established tree lines and serene setting, the property feels both timeless and full of potential—ready to be reimagined as a private retreat, hobby farm or simply a peaceful escape into nature.

Additional Details:

Lot Acres	20.25
Lot Dimensions	663x1328
School District	2174
Taxes	\$318
Taxes with Assessments	\$318
Tax Year	2026

Additional Features:

Driving Directions:

From Pine River take MN-84 N then right onto C.R. 42 at Barclay Townhall (12th St. SW) then left onto Timber Wolf Trail SW.



Listed By:
Heartland Real Estate

Affinity Real Estate Inc. participates in the Regional Multiple Listing Service of Minnesota, Inc Broker Reciprocity (sm) program, allowing us to display other broker's listings on our website. All properties are subject to prior sale, change or withdrawal.



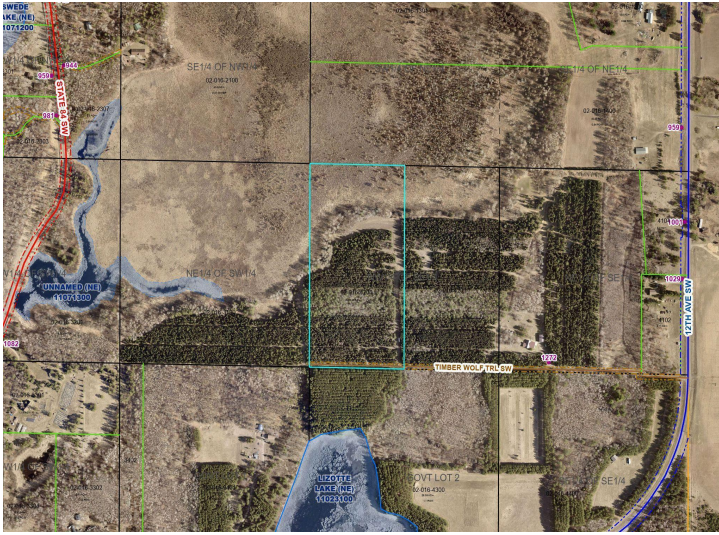
Call Affinity Real Estate

218-237-3333

info@affinityrealestate.com



Affinity Real Estate - 600 Park Avenue South - Park Rapids MN 56470



website: www.AffinityRealEstate.com | email: info@affinityrealestate.com | office: 218-237-3333 | fax:218-237-3377



\$139,500
MLS 7061614 Land
TBD Timber Wolf Trail
Pine River MN 56435

website: www.AffinityRealEstate.com | email: info@affinityrealestate.com | office: 218-237-3333 | fax:218-237-3377



\$139,500

MLS 7061614 Land
TBD Timber Wolf Trail
Pine River MN 56435