



MLS 7061616 Land

\$14,900

0.62 Acres
Raw Land

L23 B32 Shady Trail
Breezy Point MN 56472

Status: Active



Description:

Located in a quiet neighborhood just waiting for your home or cabin building plans. This lot is nicely wooded and a short golf cart ride to Breezy Point Resort and all amenities the area has to offer. Situated in the Pequot Lakes school district. Close to championship golf courses, many public lake accesses of surrounding lakes (Pelican, Ossawinnamakee and Whitefish Chain), public sand beach, playground, fine dining and great shopping. Come take a look.

Additional Details:

Lot Acres	0.62
Lot Dimensions	120'x241'x123'x209'
School District	186
Taxes	\$142
Taxes with Assessments	\$142
Tax Year	2026

Additional Features:

Driving Directions:

From the gates of Breezy Point Resort go N on CR11 - to Lt on Ski Chalet Dr - Rt on Four Seasons Place - Lt on shady Tral to For Sale sign on Rt. (Just before #8308 Shady Trail.)



Listed By:
Edina Realty, Inc.

Affinity Real Estate Inc. participates in the Regional Multiple Listing Service of Minnesota, Inc Broker Reciprocity (sm) program, allowing us to display other broker's listings on our website. All properties are subject to prior sale, change or withdrawal.



Call Affinity Real Estate

218-237-3333

info@affinityrealestate.com



Affinity Real Estate - 600 Park Avenue South - Park Rapids MN 56470



website: www.AffinityRealEstate.com | email: info@affinityrealestate.com | office: 218-237-3333 | fax: 218-237-3377



\$14,900
 MLS 7061616 Land
 L23 B32 Shady Trail
 Breezy Point MN 56472



website: www.AffinityRealEstate.com | email: info@affinityrealestate.com | office: 218-237-3333 | fax:218-237-3377



\$14,900
MLS 7061616 Land
L23 B32 Shady Trail
Breezy Point MN 56472



website: www.AffinityRealEstate.com | email: info@affinityrealestate.com | office: 218-237-3333 | fax: 218-237-3377



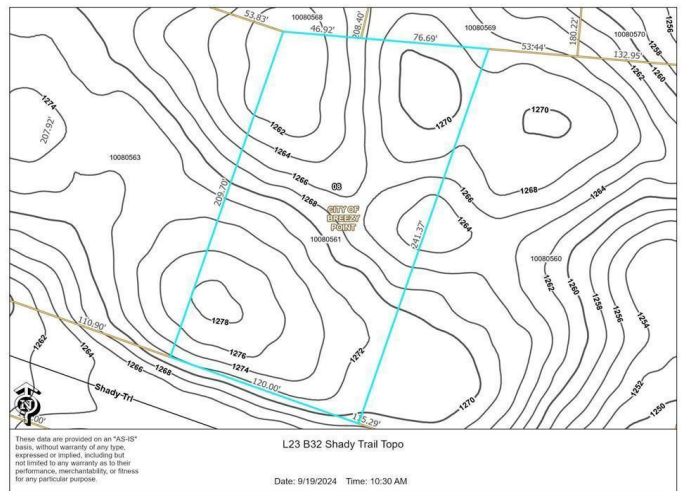
\$14,900
 MLS 7061616 Land
 L23 B32 Shady Trail
 Breezy Point MN 56472



website: www.AffinityRealEstate.com | email: info@affinityrealestate.com | office: 218-237-3333 | fax:218-237-3377



\$14,900
MLS 7061616 Land
L23 B32 Shady Trail
Breezy Point MN 56472



website: www.AffinityRealEstate.com | email: info@affinityrealestate.com | office: 218-237-3333 | fax:218-237-3377



\$14,900
 MLS 7061616 Land
 L23 B32 Shady Trail
 Breezy Point MN 56472