



MLS 7061803 Land

\$420,000

60 Acres
Raw Land

TBD County Highway 31
Detroit Lakes MN 56501

Status: Active

Description:

First time offered in 50 years. Rare 60-acre parcel just minutes from the east Pelican Lake public access. This land is high and dry with acres of mature timber. Ideal hunting and recreational land for those seeking a private, off-grid escape. Priced at \$7,000/acre. Off-road vehicles recommended to navigate minimum maintenance road. Call agent for details.

Additional Details:

Lot Acres	60
Lot Dimensions	irr
School District	548
Taxes	\$1,052
Taxes with Assessments	\$1,052
Tax Year	2026

Additional Features:

Driving Directions:

From East side Pelican Rapids Lake Public Access, head south on Co Hwy 31 for approx one mile and take minimum maintenance road. Follow signs.



Listed By:
REMAX Lakes Region

Affinity Real Estate Inc. participates in the Regional Multiple Listing Service of Minnesota, Inc Broker Reciprocity (sm) program, allowing us to display other broker's listings on our website. All properties are subject to prior sale, change or withdrawal.



Call Affinity Real Estate

218-237-3333

info@affinityrealestate.com



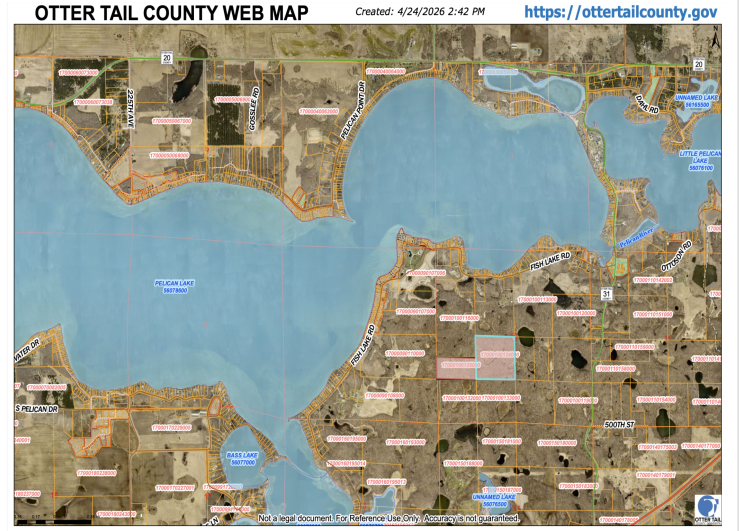
Affinity Real Estate - 600 Park Avenue South - Park Rapids MN 56470



website: www.AffinityRealEstate.com | email: info@affinityrealestate.com | office: 218-237-3333 | fax:218-237-3377



\$420,000
MLS 7061803 Land
TBD County Highway 31
Detroit Lakes MN 56501



website: www.AffinityRealEstate.com | email: info@affinityrealestate.com | office: 218-237-3333 | fax:218-237-3377



\$420,000
MLS 7061803 Land
TBD County Highway 31
Detroit Lakes MN 56501



website: www.AffinityRealEstate.com | email: info@affinityrealestate.com | office: 218-237-3333 | fax:218-237-3377



\$420,000
MLS 7061803 Land
TBD County Highway 31
Detroit Lakes MN 56501