



MLS 7062257 Lake Home

\$595,000

2,118 sq ft
3 bedrooms
2 baths

32061 Primrose Lane
Laporte MN 56461

Waterfront: Steamboat

Status: Active

Description:

Welcome to your fully furnished lake retreat on beautiful Steamboat Lake—part of the highly sought-after Leech Lake Chain!

Turn-key property, This is your opportunity to step right into summer and start enjoying lake life immediately.

Set on approximately 165 feet of private, hard-bottom shoreline, this level lot offers the ideal setting for swimming, fishing, and relaxing right at the water's edge. With stunning views and direct access to incredible fishing, this property delivers the Up North lifestyle buyers are searching for.

Steamboat Lake spans roughly 1,700+ acres and connects to the expansive Leech Lake Chain—over 112,000 acres of water—via Steamboat Bay and the Steamboat River. Enjoy the best of both worlds: peaceful, less crowded waters at home, with the ability to boat into one of Minnesota's premier lake systems for all-day adventures.

Inside, the home is neat, clean, and thoughtfully updated. The brand-new kitchen is a standout feature, showcasing warm hickory cabinetry, a large center island, updated flooring, and excellent storage including a pantry. The dining area flows seamlessly to an oversized lakeside deck—perfect for entertaining—with a heavy-duty patio set already in place.

The main level features two bedrooms and a cozy living room with beautiful lake views, while the lower level offers a guest bedroom, full bathroom, and an expansive family room that walks out to an updated lakeside patio—ideal for gathering after a day on the water.

Additional highlights include an asphalt driveway and parking pad, a functional foyer with built-in storage, and a detached two-stall garage with finished space above currently used as a heated bunkhouse—perfect for guests, a game room, or additional living space. A 10x12 garden shed adds even more storage.

Most furnishings are included, making this a true turnkey opportunity—just bring your suitcase and start enjoying lake life, see the list of items that are included with the sale!

Located near Waiker, Cass Lake, Laporte, and Bemidji, you'll also have quick access to the Hiawatha National State Trail, Paul Bunyan State Park, and the Chippewa National Forest for year-round recreation including biking, hiking, ATV riding, and more. This is your chance to be on the lake this summer—schedule your private showing today!

Affinity Real Estate Inc. participates in the Regional Multiple Listing Service of Minnesota, Inc Broker Reciprocity (sm) program, allowing us to display other broker's listings on our website. All properties are subject to prior sale, change or withdrawal.



Call Affinity Real Estate
218-237-3333
info@affinityrealestate.com



Affinity Real Estate - 600 Park Avenue South - Park Rapids MN 56470

Additional Details:

Year Built	1998
Lot Acres	1.85
Lot Dimensions	107'-500 x 150'-500



website: www.AffinityRealEstate.com | email: info@affinityrealestate.com | office: 218-237-3333 | fax:218-237-3377

Affinity
REAL ESTATE INC

\$595,000
MLS 7062257 Lake Home
32061 Primrose Lane
Laporte MN 56461



website: www.AffinityRealEstate.com | email: info@affinityrealestate.com | office: 218-237-3333 | fax:218-237-3377

Affinity
REAL ESTATE INC

\$595,000
MLS 7062257 Lake Home
32061 Primrose Lane
Laporte MN 56461



website: www.AffinityRealEstate.com | email: info@affinityrealestate.com | office: 218-237-3333 | fax:218-237-3377



\$595,000
MLS 7062257 Lake Home
32061 Primrose Lane
Laporte MN 56461



website: www.AffinityRealEstate.com | email: info@affinityrealestate.com | office: 218-237-3333 | fax:218-237-3377

Affinity
REAL ESTATE INC

\$595,000
MLS 7062257 Lake Home
32061 Primrose Lane
Laporte MN 56461



website: www.AffinityRealEstate.com | email: info@affinityrealestate.com | office: 218-237-3333 | fax:218-237-3377

Affinity
REAL ESTATE INC

\$595,000
MLS 7062257 Lake Home
32061 Primrose Lane
Laporte MN 56461



website: www.AffinityRealEstate.com | email: info@affinityrealestate.com | office: 218-237-3333 | fax: 218-237-3377

Affinity
REAL ESTATE INC

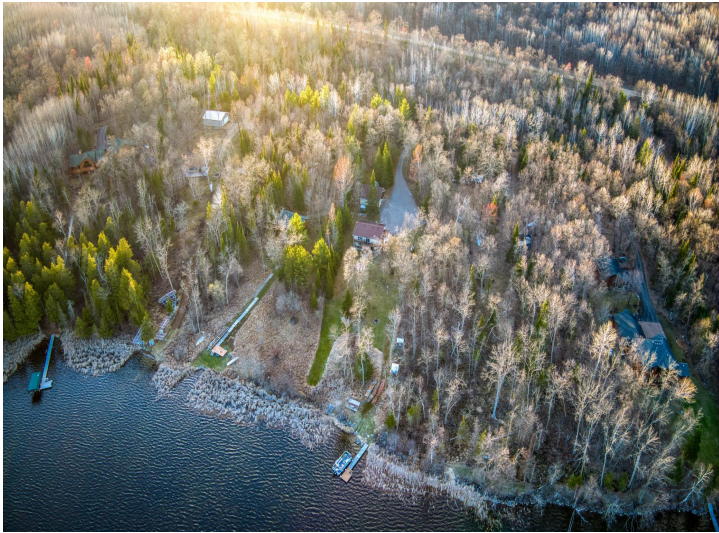
\$595,000
MLS 7062257 Lake Home
32061 Primrose Lane
Laporte MN 56461



website: www.AffinityRealEstate.com | email: info@affinityrealestate.com | office: 218-237-3333 | fax:218-237-3377

Affinity
REAL ESTATE INC

\$595,000
MLS 7062257 Lake Home
32061 Primrose Lane
Laporte MN 56461



website: www.AffinityRealEstate.com | email: info@affinityrealestate.com | office: 218-237-3333 | fax:218-237-3377

Affinity
REAL ESTATE INC

\$595,000
MLS 7062257 Lake Home
32061 Primrose Lane
Laporte MN 56461



website: www.AffinityRealEstate.com | email: info@affinityrealestate.com | office: 218-237-3333 | fax:218-237-3377

Affinity
REAL ESTATE INC

\$595,000
MLS 7062257 Lake Home
32061 Primrose Lane
Laporte MN 56461



website: www.AffinityRealEstate.com | email: info@affinityrealestate.com | office: 218-237-3333 | fax:218-237-3377



\$595,000
MLS 7062257 Lake Home
32061 Primrose Lane
Laporte MN 56461



website: www.AffinityRealEstate.com | email: info@affinityrealestate.com | office: 218-237-3333 | fax:218-237-3377



\$595,000
MLS 7062257 Lake Home
32061 Primrose Lane
Laporte MN 56461



website: www.AffinityRealEstate.com | email: info@affinityrealestate.com | office: 218-237-3333 | fax:218-237-3377



\$595,000
MLS 7062257 Lake Home
32061 Primrose Lane
Laporte MN 56461



website: www.AffinityRealEstate.com | email: info@affinityrealestate.com | office: 218-237-3333 | fax:218-237-3377



\$595,000
MLS 7062257 Lake Home
32061 Primrose Lane
Laporte MN 56461



website: www.AffinityRealEstate.com | email: info@affinityrealestate.com | office: 218-237-3333 | fax: 218-237-3377

Affinity
REAL ESTATE INC

\$595,000
MLS 7062257 Lake Home
32061 Primrose Lane
Laporte MN 56461



website: www.AffinityRealEstate.com | email: info@affinityrealestate.com | office: 218-237-3333 | fax:218-237-3377



\$595,000
MLS 7062257 Lake Home
32061 Primrose Lane
Laporte MN 56461



website: www.AffinityRealEstate.com | email: info@affinityrealestate.com | office: 218-237-3333 | fax:218-237-3377



\$595,000
MLS 7062257 Lake Home
32061 Primrose Lane
Laporte MN 56461



website: www.AffinityRealEstate.com | email: info@affinityrealestate.com | office: 218-237-3333 | fax:218-237-3377



\$595,000
MLS 7062257 Lake Home
32061 Primrose Lane
Laporte MN 56461



website: www.AffinityRealEstate.com | email: info@affinityrealestate.com | office: 218-237-3333 | fax:218-237-3377



\$595,000
MLS 7062257 Lake Home
32061 Primrose Lane
Laporte MN 56461



website: www.AffinityRealEstate.com | email: info@affinityrealestate.com | office: 218-237-3333 | fax:218-237-3377



\$595,000
MLS 7062257 Lake Home
32061 Primrose Lane
Laporte MN 56461

website: www.AffinityRealEstate.com | email: info@affinityrealestate.com | office: 218-237-3333 | fax:218-237-3377



\$595,000
MLS 7062257 Lake Home
32061 Primrose Lane
Laporte MN 56461