



MLS 7062312 Residential

\$328,800

1,467 sq ft
2 bedrooms
2 baths

5500 Timber Ridge Drive
Bemidji MN 56601

Status: Active

Description:

Welcome to 5500 Timber Ridge Dr NE – where comfort, character, and location come together. This well-maintained 2 bedroom, 2 bathroom home offers a warm and inviting layout with an open-concept main level that seamlessly connects the kitchen, dining, and living spaces with the inviting and beautiful double-sided wood-burning fireplace—perfect for cozy evenings and a standout feature that adds charm to both the living room and dining area. The main level is fully finished, providing comfortable everyday living, while the full unfinished basement offers a blank slate for future expansion—whether you’re dreaming of additional living space, a home office, or simply need abundant storage. The home is in great condition and blends timeless character with thoughtful updates. The exterior features attractive brick on the front and cedar siding on the rest, giving the home a distinctive and welcoming curb appeal. You’ll also appreciate the 2-car attached garage, ideal for keeping vehicles and gear protected year-round. Located in a highly desirable area just minutes from Lake Bemidji State Park, the scenic bog walk, and the Paul Bunyan State Trail, this home is perfect for anyone who enjoys outdoor recreation, biking, and nature right out your doorstep.

Additional Details:

Year Built	1984
Lot Acres	1.83
Lot Dimensions	310x401x358x168
Garage Stalls	2
School District	31
Taxes	\$3,038
Taxes with Assessments	\$3,038
Tax Year	2025

Additional Features:

Basement: Block **Fuel:** Electric, Wood **Garage:** 2 **Heat:** Forced Air **Sewer:** Septic System Compliant - Yes **Water:** 4-Inch Submersible, Private, Well **Air Conditioning:** Central Air

Driving Directions:

From Bemidji, North on Bemidji Rd, East on Birchmont Beach Road, W North on Hazen Blvd, East on Timber Ridge Dr NE to



Listed By:
Real Broker, LLC

Affinity Real Estate Inc. participates in the Regional Multiple Listing Service of Minnesota, Inc Broker Reciprocity (sm) program, allowing us to display other broker’s listings on our website. All properties are subject to prior sale, change or withdrawal.



Call Affinity Real Estate

218-237-3333

info@affinityrealestate.com



Affinity Real Estate - 600 Park Avenue South - Park Rapids MN 56470



website: www.AffinityRealEstate.com | email: info@affinityrealestate.com | office: 218-237-3333 | fax: 218-237-3377

Affinity
REAL ESTATE INC

\$328,800
MLS 7062312 Residential
5500 Timber Ridge Drive
Bemidji MN 56601



website: www.AffinityRealEstate.com | email: info@affinityrealestate.com | office: 218-237-3333 | fax: 218-237-3377

Affinity
REAL ESTATE INC

\$328,800
MLS 7062312 Residential
5500 Timber Ridge Drive
Bemidji MN 56601



website: www.AffinityRealEstate.com | email: info@affinityrealestate.com | office: 218-237-3333 | fax:218-237-3377

Affinity
REAL ESTATE INC

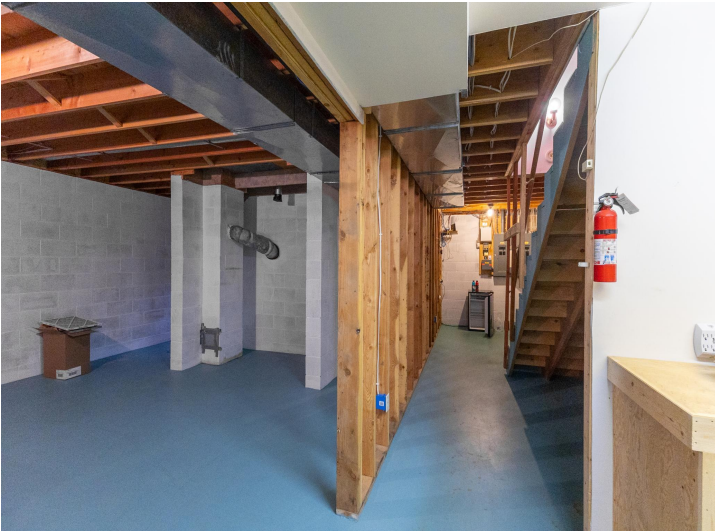
\$328,800
MLS 7062312 Residential
5500 Timber Ridge Drive
Bemidji MN 56601



website: www.AffinityRealEstate.com | email: info@affinityrealestate.com | office: 218-237-3333 | fax: 218-237-3377

Affinity
REAL ESTATE INC

\$328,800
MLS 7062312 Residential
5500 Timber Ridge Drive
Bemidji MN 56601



website: www.AffinityRealEstate.com | email: info@affinityrealestate.com | office: 218-237-3333 | fax:218-237-3377

Affinity
REAL ESTATE INC

\$328,800
MLS 7062312 Residential
5500 Timber Ridge Drive
Bemidji MN 56601



website: www.AffinityRealEstate.com | email: info@affinityrealestate.com | office: 218-237-3333 | fax:218-237-3377

Affinity
REAL ESTATE INC

\$328,800
MLS 7062312 Residential
5500 Timber Ridge Drive
Bemidji MN 56601



website: www.AffinityRealEstate.com | email: info@affinityrealestate.com | office: 218-237-3333 | fax: 218-237-3377



\$328,800
MLS 7062312 Residential
5500 Timber Ridge Drive
Bemidji MN 56601