

MLS 7062362 Land

**\$56,000**

2.52 Acres  
Subdivided

TBD. Bedow Road  
Fort Ripley MN 56449

Status: Active

**Description:**

Great building lot just outside of Brainerd, MN! This 2.52 acres provides a great level lot with a mix of trees, driveway access already in place, and ready for your building plans! Easy access to utilities and fiber optic!

**Additional Details:**

Lot Acres	2.52
Lot Dimensions	266x422
School District	181
Taxes	\$334
Taxes with Assessments	\$334
Tax Year	2026

**Additional Features:**

**Driving Directions:**

371 South of Brainerd to Bedow Rd. Follow Bedow Rd to property on right.



Listed By:  
Edina Realty, Inc.

Affinity Real Estate Inc. participates in the Regional Multiple Listing Service of Minnesota, Inc Broker Reciprocity (sm) program, allowing us to display other broker's listings on our website. All properties are subject to prior sale, change or withdrawal.



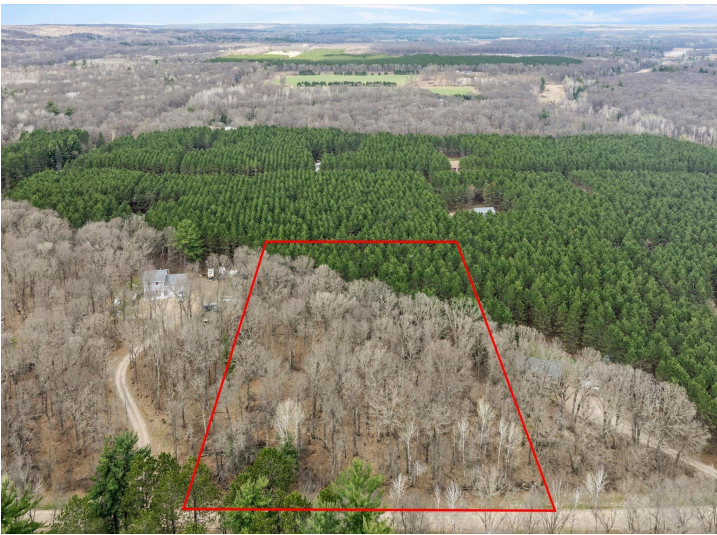
Call Affinity Real Estate

**218-237-3333**

[info@affinityrealestate.com](mailto:info@affinityrealestate.com)



Affinity Real Estate - 600 Park Avenue South - Park Rapids MN 56470



website: [www.AffinityRealEstate.com](http://www.AffinityRealEstate.com) | email: [info@affinityrealestate.com](mailto:info@affinityrealestate.com) | office: 218-237-3333 | fax: 218-237-3377



**\$56,000**  
MLS 7062362 Land  
TBD. Bedow Road  
Fort Ripley MN 56449



website: [www.AffinityRealEstate.com](http://www.AffinityRealEstate.com) | email: [info@affinityrealestate.com](mailto:info@affinityrealestate.com) | office: 218-237-3333 | fax:218-237-3377



**\$56,000**  
MLS 7062362 Land  
TBD. Bedow Road  
Fort Ripley MN 56449



website: [www.AffinityRealEstate.com](http://www.AffinityRealEstate.com) | email: [info@affinityrealestate.com](mailto:info@affinityrealestate.com) | office: 218-237-3333 | fax:218-237-3377



**\$56,000**  
MLS 7062362 Land  
TBD. Bedow Road  
Fort Ripley MN 56449