



MLS 7062428 Lake Home

\$634,900

1,456 sq ft
2 bedrooms
1 baths

26066 County Highway 4
Pelican Rapids MN 56572

Waterfront: Lida

Status: Active

Description:

Lida Lake lakefront retreat with stunning south-facing views, level lot, sandy beach, and 80' dock. This 2-bedroom, 1-bath home (with a guest house attached to the garage) features a sunken living room with large lake-facing windows, vaulted ceilings with beams, and a formal dining room with beautiful water views. Open kitchen offers ample storage and flows into an attached bright family room ideal for entertaining or housing guests. Updates include furnace (2 yrs) and shingles (1 yr). Exterior offers a 14'x17' maintenance-free deck with seating, guest house off garage, oversized 1-stall garage, storage shed, and enclosed storage. A rare opportunity for comfortable, well-equipped lake living.

Additional Details:

Year Built	1961
Lot Acres	0.279
Lot Dimensions	75 x 185
Garage Stalls	1
School District	548
Taxes	\$3,706
Taxes with Assessments	\$3,841
Tax Year	2025

Additional Features:

Basement: Crawl Space, Other **Fuel:** Propane **Garage:** 1 **Heat:** Fireplace(s) **Sewer:** Septic System Compliant - Yes, Tank with Drainage Field
Water: Sand Point **Air Conditioning:** Central Air

Driving Directions:

East on-29, Left on Hwy 34 to Detroit Lakes, on Hwy 34, Right on 215th Ave, Right on Hwy 59, Left on Cty 4, On right is your destination.



Listed By:
Park Co., REALTORS®

Affinity Real Estate Inc. participates in the Regional Multiple Listing Service of Minnesota, Inc Broker Reciprocity (sm) program, allowing us to display other broker's listings on our website. All properties are subject to prior sale, change or withdrawal.



Call Affinity Real Estate

218-237-3333

info@affinityrealestate.com



Affinity Real Estate - 600 Park Avenue South - Park Rapids MN 56470



website: www.AffinityRealEstate.com | email: info@affinityrealestate.com | office: 218-237-3333 | fax: 218-237-3377

Affinity
REAL ESTATE INC

\$634,900
MLS 7062428 Lake Home
26066 County Highway 4
Pelican Rapids MN 56572



website: www.AffinityRealEstate.com | email: info@affinityrealestate.com | office: 218-237-3333 | fax: 218-237-3377

Affinity
REAL ESTATE INC

\$634,900
MLS 7062428 Lake Home
26066 County Highway 4
Pelican Rapids MN 56572



website: www.AffinityRealEstate.com | email: info@affinityrealestate.com | office: 218-237-3333 | fax: 218-237-3377

Affinity
REAL ESTATE INC

\$634,900
MLS 7062428 Lake Home
26066 County Highway 4
Pelican Rapids MN 56572



website: www.AffinityRealEstate.com | email: info@affinityrealestate.com | office: 218-237-3333 | fax: 218-237-3377

Affinity
REAL ESTATE INC

\$634,900
MLS 7062428 Lake Home
26066 County Highway 4
Pelican Rapids MN 56572



website: www.AffinityRealEstate.com | email: info@affinityrealestate.com | office: 218-237-3333 | fax:218-237-3377

Affinity
REAL ESTATE INC

\$634,900
MLS 7062428 Lake Home
26066 County Highway 4
Pelican Rapids MN 56572



website: www.AffinityRealEstate.com | email: info@affinityrealestate.com | office: 218-237-3333 | fax: 218-237-3377



\$634,900
MLS 7062428 Lake Home
26066 County Highway 4
Pelican Rapids MN 56572



website: www.AffinityRealEstate.com | email: info@affinityrealestate.com | office: 218-237-3333 | fax:218-237-3377



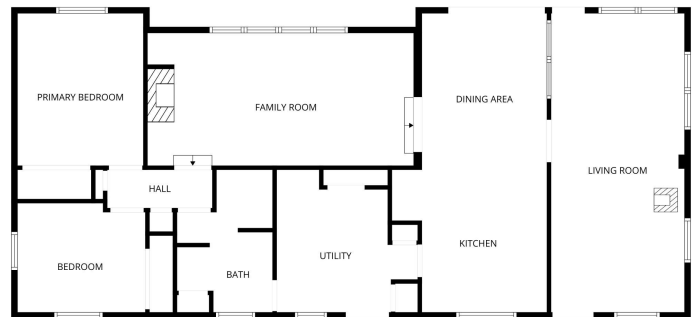
\$634,900
MLS 7062428 Lake Home
26066 County Highway 4
Pelican Rapids MN 56572



website: www.AffinityRealEstate.com | email: info@affinityrealestate.com | office: 218-237-3333 | fax:218-237-3377



\$634,900
MLS 7062428 Lake Home
26066 County Highway 4
Pelican Rapids MN 56572



FLOOR PLAN CREATED BY CUBICASA APP. MEASUREMENTS DEEMED HIGHLY RELIABLE BUT NOT GUARANTEED.

website: www.AffinityRealEstate.com | email: info@affinityrealestate.com | office: 218-237-3333 | fax:218-237-3377



\$634,900
MLS 7062428 Lake Home
26066 County Highway 4
Pelican Rapids MN 56572