



MLS 7062508 Residential

**\$265,000**

1,120 sq ft  
2 bedrooms  
1 baths

39161 County 39  
Laporte MN 56461

Status: Active

**Description:**

Set on over 7 beautiful acres between Bemidji and Walker, this charming country property offers the perfect blend of privacy, convenience, and that true Up North lifestyle. Located near Laporte with easy access to local amenities, including a grocery store and dining options, you'll enjoy the peaceful setting without sacrificing everyday essentials.

The home features a cozy and well-maintained 2-bedroom, 1-bath layout with everything conveniently located on the main level—including main floor laundry. The open kitchen has been updated with new flooring and features a large bay window that fills the space with natural light while showcasing views of the mature pine trees in the front yard.

Step outside and take in the serene surroundings from both the front and back decks—ideal for morning coffee or evening wildlife watching. The property includes a detached two-stall garage with a unique screened-in back area, creating a private, relaxing retreat. There are also multiple outbuildings for storage, hobbies, or future possibilities.

Enjoy evenings around the backyard fire pit, explore your own walking trails, or take advantage of the designated camper parking area complete with an exterior hookup. This move-in ready home offers space, comfort, and the opportunity to truly enjoy northern Minnesota living.

**Additional Details:**

Year Built	1993
Lot Acres	7.7
Lot Dimensions	300x1207
Garage Stalls	2
School District	306
Taxes	\$1,674
Taxes with Assessments	\$1,674
Tax Year	2025

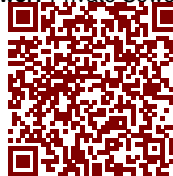
**Additional Features:**

**Basement:** Crawl Space **Fuel:** Propane **Garage:** 2 **Heat:** Forced Air **Sewer:** Private Sewer **Water:** Well **Air Conditioning:** Central Air



Listed By:  
Headwaters Realty Services LLC

Affinity Real Estate Inc. participates in the Regional Multiple Listing Service of Minnesota, Inc Broker Reciprocity (sm) program, allowing us to display other broker's listings on our website. All properties are subject to prior sale, change or withdrawal.



**Call Affinity Real Estate**

**218-237-3333**

**info@affinityrealestate.com**



**Affinity Real Estate - 600 Park Avenue South - Park Rapids MN 56470**



website: [www.AffinityRealEstate.com](http://www.AffinityRealEstate.com) | email: [info@affinityrealestate.com](mailto:info@affinityrealestate.com) | office: 218-237-3333 | fax:218-237-3377

**Affinity**  
REAL ESTATE INC

**\$265,000**  
MLS 7062508 Residential  
39161 County 39  
Laporte MN 56461



website: [www.AffinityRealEstate.com](http://www.AffinityRealEstate.com) | email: [info@affinityrealestate.com](mailto:info@affinityrealestate.com) | office: 218-237-3333 | fax:218-237-3377

**Affinity**  
REAL ESTATE INC

**\$265,000**  
MLS 7062508 Residential  
39161 County 39  
Laporte MN 56461



website: [www.AffinityRealEstate.com](http://www.AffinityRealEstate.com) | email: [info@affinityrealestate.com](mailto:info@affinityrealestate.com) | office: 218-237-3333 | fax:218-237-3377



**\$265,000**  
MLS 7062508 Residential  
39161 County 39  
Laporte MN 56461



website: [www.AffinityRealEstate.com](http://www.AffinityRealEstate.com) | email: [info@affinityrealestate.com](mailto:info@affinityrealestate.com) | office: 218-237-3333 | fax:218-237-3377

**Affinity**  
REAL ESTATE INC

**\$265,000**  
MLS 7062508 Residential  
39161 County 39  
Laporte MN 56461



website: [www.AffinityRealEstate.com](http://www.AffinityRealEstate.com) | email: [info@affinityrealestate.com](mailto:info@affinityrealestate.com) | office: 218-237-3333 | fax:218-237-3377

**Affinity**  
REAL ESTATE INC

**\$265,000**  
MLS 7062508 Residential  
39161 County 39  
Laporte MN 56461



website: [www.AffinityRealEstate.com](http://www.AffinityRealEstate.com) | email: [info@affinityrealestate.com](mailto:info@affinityrealestate.com) | office: 218-237-3333 | fax:218-237-3377



**\$265,000**  
MLS 7062508 Residential  
39161 County 39  
Laporte MN 56461



website: [www.AffinityRealEstate.com](http://www.AffinityRealEstate.com) | email: [info@affinityrealestate.com](mailto:info@affinityrealestate.com) | office: 218-237-3333 | fax:218-237-3377



**\$265,000**  
MLS 7062508 Residential  
39161 County 39  
Laporte MN 56461



website: [www.AffinityRealEstate.com](http://www.AffinityRealEstate.com) | email: [info@affinityrealestate.com](mailto:info@affinityrealestate.com) | office: 218-237-3333 | fax:218-237-3377



**\$265,000**  
MLS 7062508 Residential  
39161 County 39  
Laporte MN 56461



website: [www.AffinityRealEstate.com](http://www.AffinityRealEstate.com) | email: [info@affinityrealestate.com](mailto:info@affinityrealestate.com) | office: 218-237-3333 | fax:218-237-3377



**\$265,000**  
MLS 7062508 Residential  
39161 County 39  
Laporte MN 56461



website: [www.AffinityRealEstate.com](http://www.AffinityRealEstate.com) | email: [info@affinityrealestate.com](mailto:info@affinityrealestate.com) | office: 218-237-3333 | fax:218-237-3377

**Affinity**  
REAL ESTATE INC

**\$265,000**  
MLS 7062508 Residential  
39161 County 39  
Laporte MN 56461



website: [www.AffinityRealEstate.com](http://www.AffinityRealEstate.com) | email: [info@affinityrealestate.com](mailto:info@affinityrealestate.com) | office: 218-237-3333 | fax:218-237-3377

**Affinity**  
REAL ESTATE INC

**\$265,000**  
MLS 7062508 Residential  
39161 County 39  
Laporte MN 56461



website: [www.AffinityRealEstate.com](http://www.AffinityRealEstate.com) | email: [info@affinityrealestate.com](mailto:info@affinityrealestate.com) | office: 218-237-3333 | fax:218-237-3377

**Affinity**  
REAL ESTATE INC

**\$265,000**  
MLS 7062508 Residential  
39161 County 39  
Laporte MN 56461



website: [www.AffinityRealEstate.com](http://www.AffinityRealEstate.com) | email: [info@affinityrealestate.com](mailto:info@affinityrealestate.com) | office: 218-237-3333 | fax:218-237-3377

**Affinity**  
REAL ESTATE INC

**\$265,000**  
MLS 7062508 Residential  
39161 County 39  
Laporte MN 56461



website: [www.AffinityRealEstate.com](http://www.AffinityRealEstate.com) | email: [info@affinityrealestate.com](mailto:info@affinityrealestate.com) | office: 218-237-3333 | fax:218-237-3377

**Affinity**  
REAL ESTATE INC

**\$265,000**  
MLS 7062508 Residential  
39161 County 39  
Laporte MN 56461



website: [www.AffinityRealEstate.com](http://www.AffinityRealEstate.com) | email: [info@affinityrealestate.com](mailto:info@affinityrealestate.com) | office: 218-237-3333 | fax:218-237-3377



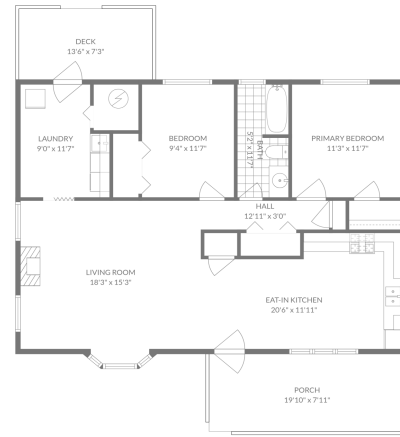
**\$265,000**  
MLS 7062508 Residential  
39161 County 39  
Laporte MN 56461



website: [www.AffinityRealEstate.com](http://www.AffinityRealEstate.com) | email: [info@affinityrealestate.com](mailto:info@affinityrealestate.com) | office: 218-237-3333 | fax:218-237-3377



**\$265,000**  
MLS 7062508 Residential  
39161 County 39  
Laporte MN 56461



TOTAL: 1052 sq. ft.  
1st floor: 1052 sq. ft.  
EXCLUDED AREAS: DECK: 98 sq. ft. PORCH: 158 sq. ft. BAY WINDOW: 9 sq. ft.  
WALLS: 67 sq. ft.

FLOOR PLAN CREATED BY CURENDA WITH MODEL RENDERINGS CREATED BY HENRY WELLES. NOT TO SCALE.

website: [www.AffinityRealEstate.com](http://www.AffinityRealEstate.com) | email: [info@affinityrealestate.com](mailto:info@affinityrealestate.com) | office: 218-237-3333 | fax: 218-237-3377



**\$265,000**  
MLS 7062508 Residential  
39161 County 39  
Laporte MN 56461