



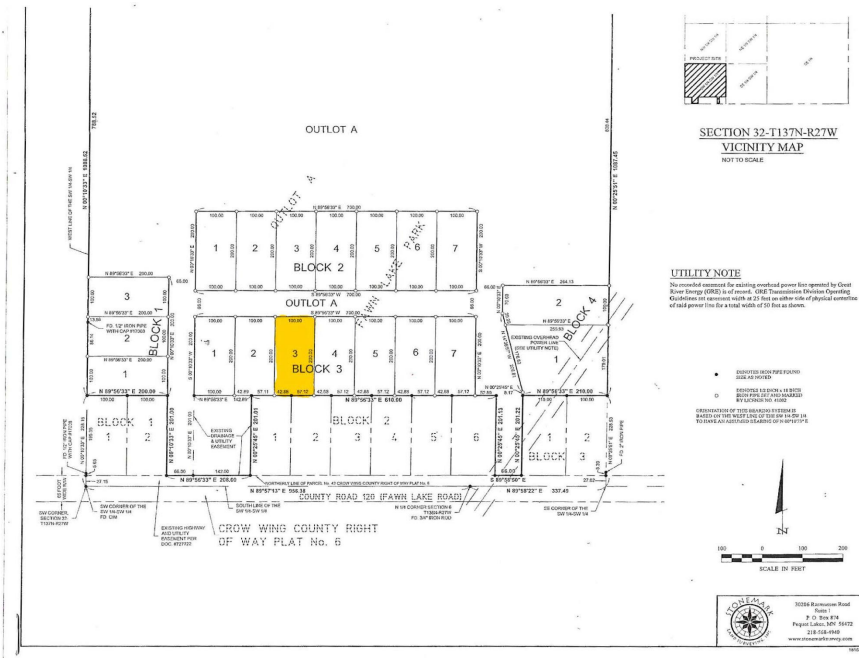
MLS 7062556 Land

\$60,000

0.46 Acres
Raw Land

12847 White Hawk Trail
Cross Lake MN 56442

Status: Active



Description:

This Fawn Lake Park First Addition development Lot 3 on Block 3 is the perfect place to build a pole building for your lake toys, car collect or other valuable items. Fawn Lake Park is close to the Crosslake, Mission Township and Breezy Point area as well as the Whitefish Chain, Ossie Chain, Pelican Lake and Horseshoe Lake.

Additional Details:

Lot Acres	0.46
Lot Dimensions	100x200
School District	186
Taxes	\$330
Taxes with Assessments	\$330
Tax Year	2026

Additional Features:

Driving Directions:

From the intersection of County Rd 3 and County Rd 66 in Crosslake take County Rd 3 South, go 2.9 miles, turn right onto Fawn Lake Rd, go 0.2 miles, turn right onto W Ravenwood Drive, turn right onto Whitehawk Trail and proceed to Lot 3 Block 3 to see sign.



Listed By:
Larson Group Real Estate/Kelle

Affinity Real Estate Inc. participates in the Regional Multiple Listing Service of Minnesota, Inc Broker Reciprocity (sm) program, allowing us to display other broker's listings on our website. All properties are subject to prior sale, change or withdrawal.



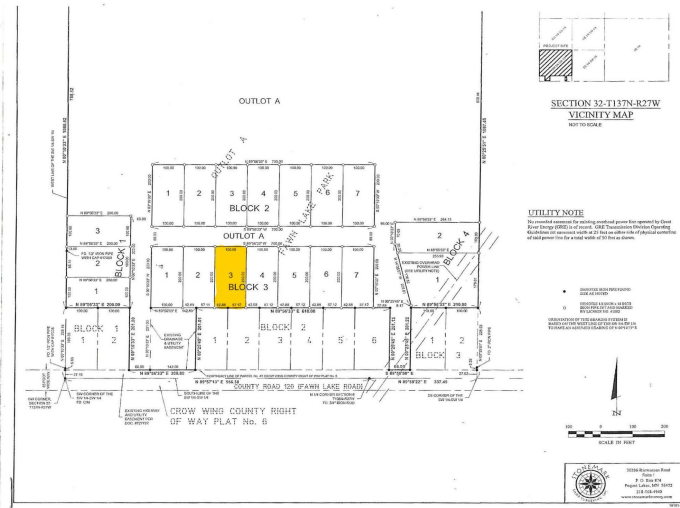
Call Affinity Real Estate

218-237-3333

info@affinityrealestate.com



Affinity Real Estate - 600 Park Avenue South - Park Rapids MN 56470



website: www.AffinityRealEstate.com | email: info@affinityrealestate.com | office: 218-237-3333 | fax:218-237-3377



\$60,000
 MLS 7062556 Land
 12847 White Hawk Trail
 Cross Lake MN 56442