



MLS 7062695 Commercial

\$165,000

35736 Allen Avenue
Crosslake MN 56442

Status: Active

Description:

Establish your presence in Crosslake Town Square. Purchase a prime end-cap building within a well-established retail center surrounded by a strong mix of thriving retail and professional office tenants, creating built-in traffic and year-round visibility. Centered around a lively public entertainment square, the property benefits from consistent foot traffic driven by community events, seasonal tourism, and local patronage. The dynamic setting fosters a walkable, engaging environment that naturally draws visitors. Whether you're looking to expand, relocate, or invest, this location delivers the perfect blend of exposure, accessibility, and synergy in a sought-after commercial hub. Join a growing business community and capitalize on the energy and momentum of Crosslake Town Square.

Additional Details:

Year Built	2003
Lot Acres	0.04
Lot Dimensions	25x67.53
School District	186
Taxes	\$1,390
Taxes with Assessments	\$1,390
Tax Year	2026

Additional Features:

Fuel: Natural Gas **Heat:** Forced Air **Sewer:** City Sewer/Connected **Water:** Shared System, Well **Air Conditioning:** Central Air

Driving Directions:

At the round-a-bout at CR 3 and CR 66 - North on CR 66 - East on Swann Dr - South on Allen Ave - Property is in the 2nd Retail Center



Listed By:
Close-Converse Commercial Prop

Affinity Real Estate Inc. participates in the Regional Multiple Listing Service of Minnesota, Inc Broker Reciprocity (sm) program, allowing us to display other broker's listings on our website. All properties are subject to prior sale, change or withdrawal.



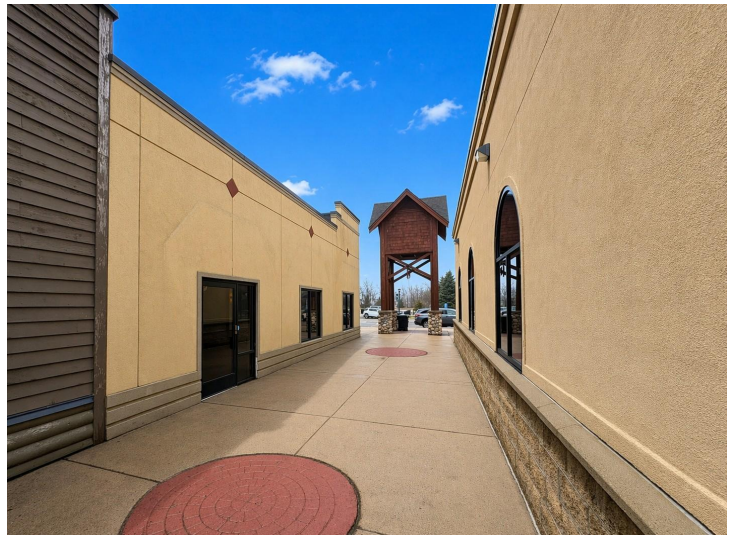
Call Affinity Real Estate

218-237-3333

info@affinityrealestate.com



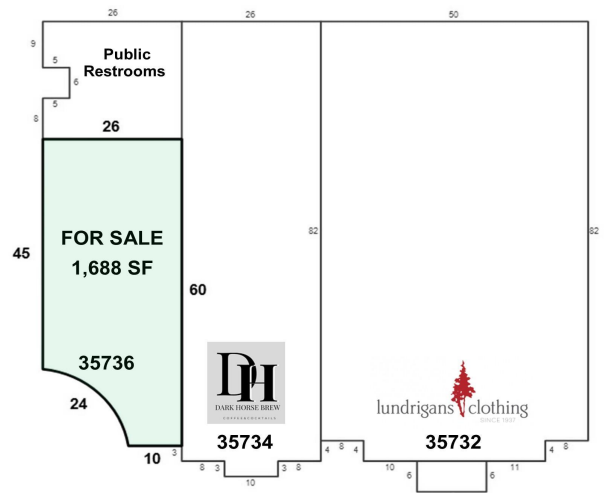
Affinity Real Estate - 600 Park Avenue South - Park Rapids MN 56470



website: www.AffinityRealEstate.com | email: info@affinityrealestate.com | office: 218-237-3333 | fax: 218-237-3377



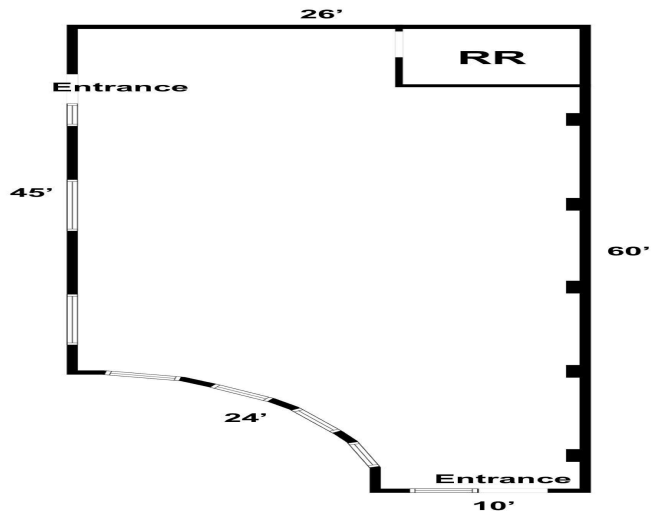
\$165,000
MLS 7062695 Commercial
35736 Allen Avenue
Crosslake MN 56442



website: www.AffinityRealEstate.com | email: info@affinityrealestate.com | office: 218-237-3333 | fax: 218-237-3377



\$165,000
 MLS 7062695 Commercial
 35736 Allen Avenue
 Crosslake MN 56442



website: www.AffinityRealEstate.com | email: info@affinityrealestate.com | office: 218-237-3333 | fax: 218-237-3377



\$165,000
MLS 7062695 Commercial
35736 Allen Avenue
Crosslake MN 56442