



MLS 7062891 Commercial

\$349,000

2594 Tilden Trail
Pine River MN 56474

Status: Active

Description:

Position your business for success along the highly traveled Hwy 371 corridor just south of Pine River. This well-located office building offers outstanding visibility, easy access, and strong exposure to both local and regional traffic. Inside, the property features an open reception area, numerous private offices, a flexible open workspace ideal for collaboration or cubicle layout, and three restrooms to comfortably support staff and clients alike. An upper-level area provides additional workspace or valuable storage, offering versatility for a variety of business needs. Whether you're looking to relocate, expand, or invest, this property delivers a functional layout in a prime location—perfect for office, service-based, or professional users seeking a presence along one of the area's most active commercial corridors.

Additional Details:

| | |
|------------------------|---------------------------------|
| Year Built | 1998 |
| Lot Acres | 0.56 |
| Lot Dimensions | 100' x 196.49' x 226.92' x 150' |
| School District | 2174 |
| Taxes | \$2,236 |
| Taxes with Assessments | \$2,236 |
| Tax Year | 2026 |

Additional Features:

Fuel: Natural Gas **Heat:** Forced Air

Driving Directions:

From the Hwy 371 and Barclay Ave stoplight intersection in Pine River - SE on Hwy 371 approx. 0.7 miles - North on Tilden Trail SW - Property is on the East



Listed By:
Close-Converse Commercial Prop

Affinity Real Estate Inc. participates in the Regional Multiple Listing Service of Minnesota, Inc Broker Reciprocity (sm) program, allowing us to display other broker's listings on our website. All properties are subject to prior sale, change or withdrawal.



Call Affinity Real Estate

218-237-3333

info@affinityrealestate.com



Affinity Real Estate - 600 Park Avenue South - Park Rapids MN 56470



website: www.AffinityRealEstate.com | email: info@affinityrealestate.com | office: 218-237-3333 | fax:218-237-3377

Affinity
REAL ESTATE INC

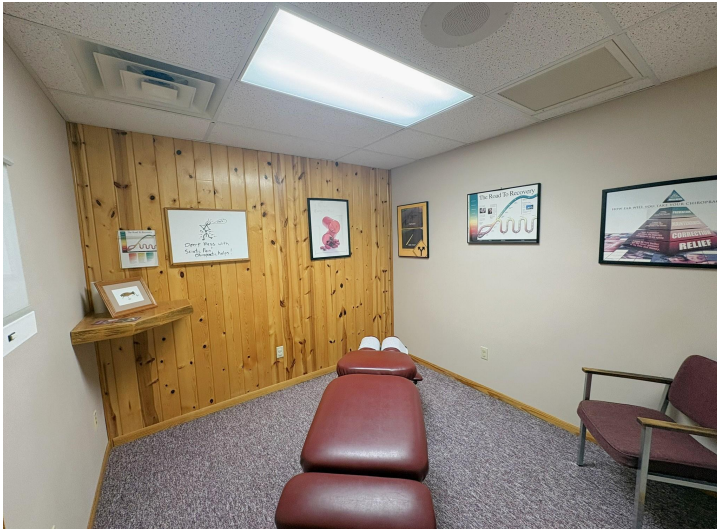
\$349,000
MLS 7062891 Commercial
2594 Tilden Trail
Pine River MN 56474



website: www.AffinityRealEstate.com | email: info@affinityrealestate.com | office: 218-237-3333 | fax:218-237-3377

Affinity
REAL ESTATE INC

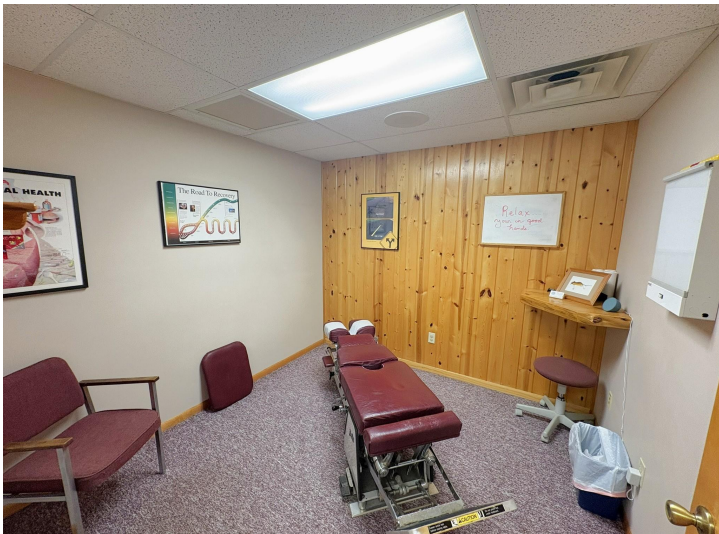
\$349,000
MLS 7062891 Commercial
2594 Tilden Trail
Pine River MN 56474



website: www.AffinityRealEstate.com | email: info@affinityrealestate.com | office: 218-237-3333 | fax:218-237-3377



\$349,000
MLS 7062891 Commercial
2594 Tilden Trail
Pine River MN 56474



website: www.AffinityRealEstate.com | email: info@affinityrealestate.com | office: 218-237-3333 | fax:218-237-3377



\$349,000
MLS 7062891 Commercial
2594 Tilden Trail
Pine River MN 56474



website: www.AffinityRealEstate.com | email: info@affinityrealestate.com | office: 218-237-3333 | fax:218-237-3377



\$349,000
MLS 7062891 Commercial
2594 Tilden Trail
Pine River MN 56474