



MLS 7062949 Land

\$130,000

4.67 Acres
Raw Land

TBD Edna Lake Rd
Nisswa MN 56468

Status: Active



Description:

Look no further for your building spot in the heart of the Brainerd Lakes area. 4.67 acres with endless possibilities. Surrounded by lakes and close to St Hwy 371.....come and walk this property and see what it has to offer.

Additional Details:

| | |
|------------------------|-------------------------|
| Lot Acres | 4.67 |
| Lot Dimensions | 459x417x770x288x340x190 |
| School District | 181 |
| Taxes | \$444 |
| Taxes with Assessments | \$584 |
| Tax Year | 2026 |

Additional Features:

Driving Directions:

From State Hwy 371 North of Nisswa, go West on Edna Lake Rd to property on the North.



Listed By:
NextHome Horizons

Affinity Real Estate Inc. participates in the Regional Multiple Listing Service of Minnesota, Inc Broker Reciprocity (sm) program, allowing us to display other broker's listings on our website. All properties are subject to prior sale, change or withdrawal.



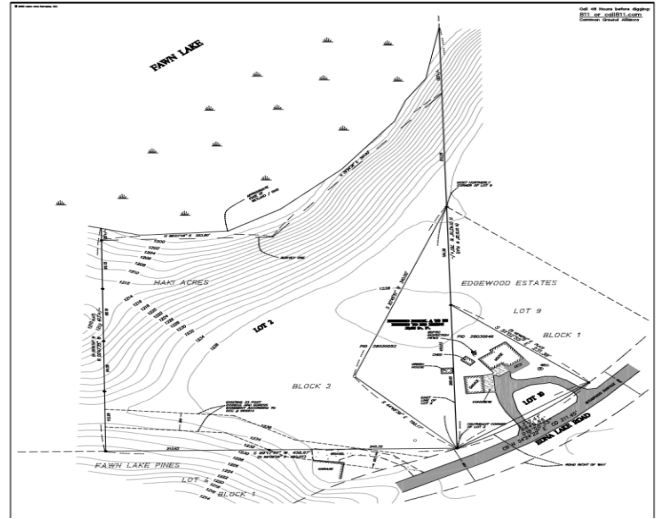
Call Affinity Real Estate

218-237-3333

info@affinityrealestate.com



Affinity Real Estate - 600 Park Avenue South - Park Rapids MN 56470



website: www.AffinityRealEstate.com | email: info@affinityrealestate.com | office: 218-237-3333 | fax:218-237-3377



\$130,000
MLS 7062949 Land
TBD Edna Lake Rd
Nisswa MN 56468