



MLS 7063088 Land

\$74,000

2.5 Acres
Finished Lot(s)

TBD Townline Road
Pelican Rapids MN 56572

Status: Active

Description:

This LEVEL 2.5-acre CORNER lot in a quiet neighborhood, offers both space and privacy while being located just one mile from Cormorant Village. Surrounded by lakes, golf courses and dining options, the location blends peaceful country life with convenience. Bring your dreams of a custom home, shop, storage building, or shouse to reality. Lakes country is waiting for you!

Additional Details:

Lot Acres	2.5
Lot Dimensions	306x350
School District	2889
Taxes	\$222
Taxes with Assessments	\$222
Tax Year	2025

Additional Features:

Driving Directions:

From Cormorant Village, take hwy 11 approximately 1 mile. Turn right onto Townline Rd.



Listed By:
HomeSmart Adventure Realty

Affinity Real Estate Inc. participates in the Regional Multiple Listing Service of Minnesota, Inc Broker Reciprocity (sm) program, allowing us to display other broker's listings on our website. All properties are subject to prior sale, change or withdrawal.



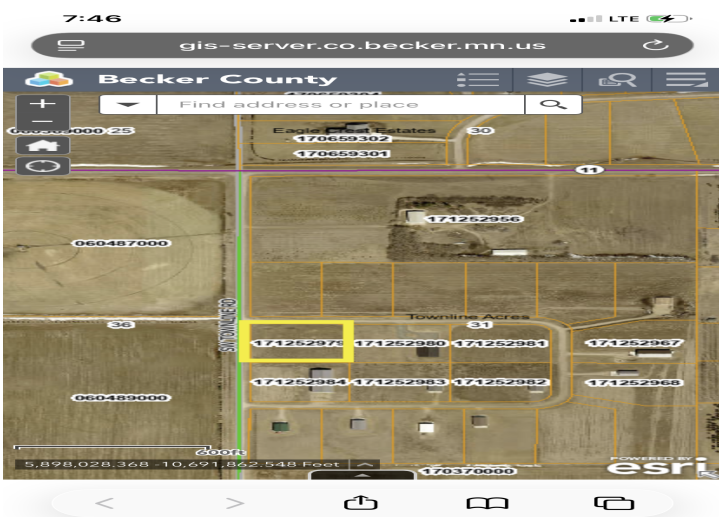
Call Affinity Real Estate

218-237-3333

info@affinityrealestate.com



Affinity Real Estate - 600 Park Avenue South - Park Rapids MN 56470



website: www.AffinityRealEstate.com | email: info@affinityrealestate.com | office: 218-237-3333 | fax:218-237-3377



\$74,000
MLS 7063088 Land
TBD Townline Road
Pelican Rapids MN 56572