



MLS 7063114 Land

**\$149,000**

10.4 Acres  
Raw Land

Lot C Sandbar Lane  
Merrifield MN 56465

Status: Active

**Description:**

Enjoy the peace and privacy of this beautiful 10-acre wooded parcel near Horseshoe and Pelican Lakes. Tucked away on a quiet dead-end road, this property offers the perfect setting for your future home or cabin retreat. A natural mix of trees and open space gives you room to spread out while still feeling connected to the outdoors. Additional parcels are available if you are looking for even more space.

**Additional Details:**

Lot Acres	10.4
Lot Dimensions	337x1341x337x1341
School District	182
Taxes	\$144
Taxes with Assessments	\$132
Tax Year	2026

**Additional Features:**

**Driving Directions:**

South on County Rd 3 at Cty rd 3 and County Rd 11 round about to left on North Horseshoe Lake Rd to just past 13884 N Horseshoe Lake Road or property on left



Listed By:  
Dane Arthur Real Estate Agency-Crosslake

Affinity Real Estate Inc. participates in the Regional Multiple Listing Service of Minnesota, Inc Broker Reciprocity (sm) program, allowing us to display other broker's listings on our website. All properties are subject to prior sale, change or withdrawal.



Call Affinity Real Estate

**218-237-3333**

[info@affinityrealestate.com](mailto:info@affinityrealestate.com)



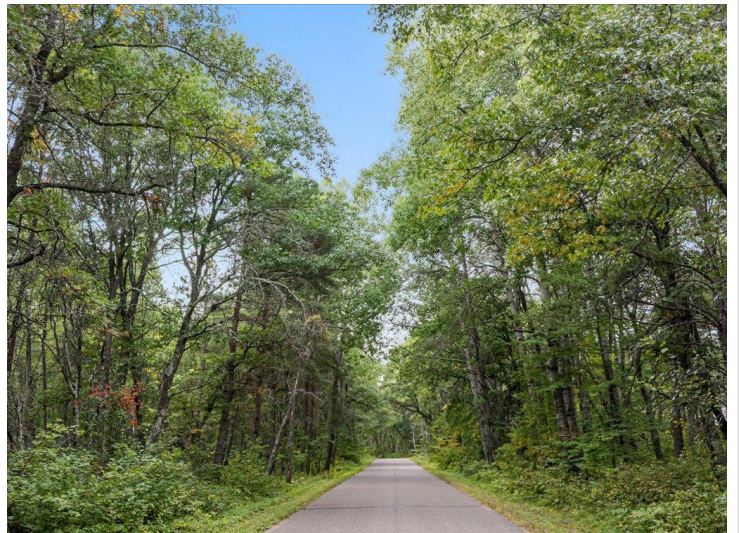
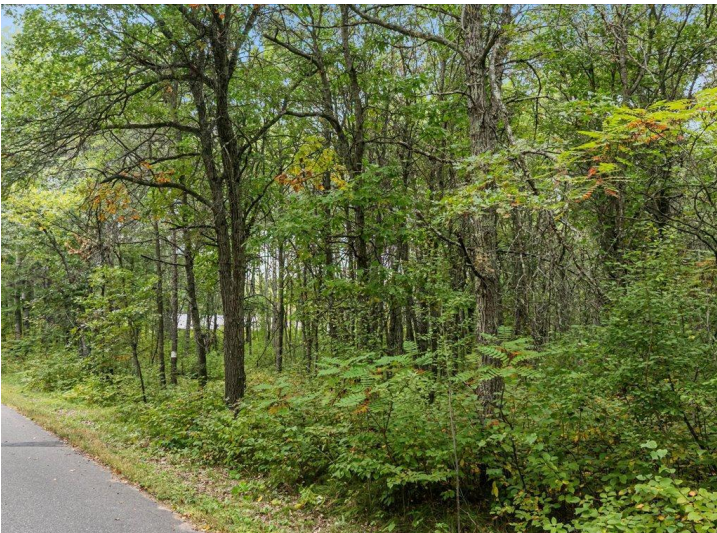
Affinity Real Estate - 600 Park Avenue South - Park Rapids MN 56470



website: [www.AffinityRealEstate.com](http://www.AffinityRealEstate.com) | email: [info@affinityrealestate.com](mailto:info@affinityrealestate.com) | office: 218-237-3333 | fax:218-237-3377



**\$149,000**  
MLS 7063114 Land  
Lot C Sandbar Lane  
Merrifield MN 56465



website: [www.AffinityRealEstate.com](http://www.AffinityRealEstate.com) | email: [info@affinityrealestate.com](mailto:info@affinityrealestate.com) | office: 218-237-3333 | fax:218-237-3377



**\$149,000**  
MLS 7063114 Land  
Lot C Sandbar Lane  
Merrifield MN 56465



website: [www.AffinityRealEstate.com](http://www.AffinityRealEstate.com) | email: [info@affinityrealestate.com](mailto:info@affinityrealestate.com) | office: 218-237-3333 | fax:218-237-3377



**\$149,000**  
MLS 7063114 Land  
Lot C Sandbar Lane  
Merrifield MN 56465



website: [www.AffinityRealEstate.com](http://www.AffinityRealEstate.com) | email: [info@affinityrealestate.com](mailto:info@affinityrealestate.com) | office: 218-237-3333 | fax:218-237-3377



**\$149,000**  
MLS 7063114 Land  
Lot C Sandbar Lane  
Merrifield MN 56465