



MLS 7063137 Land

\$149,000

10.3 Acres
Raw Land

Lot E Sandbar Lane
Merrifield MN 56465

Status: Active

Description:

Surrounded by nature and just minutes from Horseshoe Lake, this 10-acre parcel offers a quiet and private location to build your dream home or getaway. Set on a low-traffic dead-end road, it provides a peaceful setting with plenty of space to enjoy the beauty of the Northwoods. Additional land is available nearby for those looking to expand.

Additional Details:

Lot Acres	10.3
Lot Dimensions	334.50x1342x334.50x1343
School District	182
Taxes	\$144
Taxes with Assessments	\$132
Tax Year	2026

Additional Features:

Driving Directions:

South on County Rd 3 at Cty rd 3 and County Rd 11 round about to left on North Horseshoe Lake Rd to just past 13884 N Horseshoe Lake Road or property on left



Listed By:
Dane Arthur Real Estate Agency-Crosslake

Affinity Real Estate Inc. participates in the Regional Multiple Listing Service of Minnesota, Inc Broker Reciprocity (sm) program, allowing us to display other broker's listings on our website. All properties are subject to prior sale, change or withdrawal.



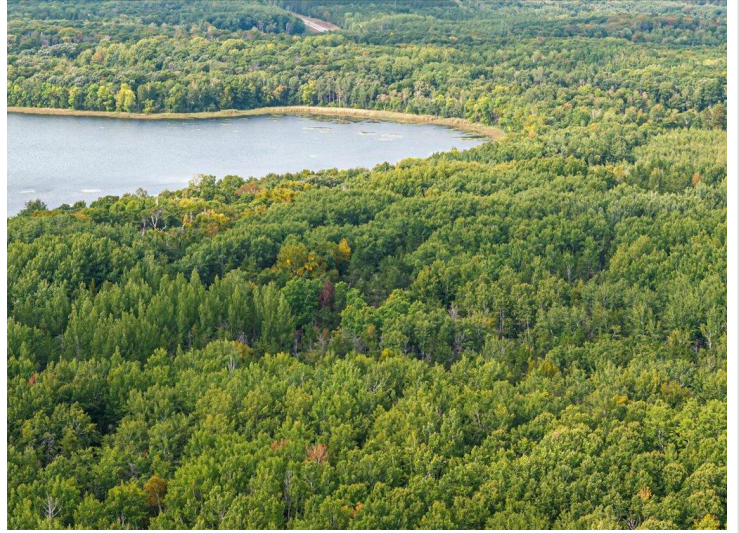
Call Affinity Real Estate

218-237-3333

info@affinityrealestate.com



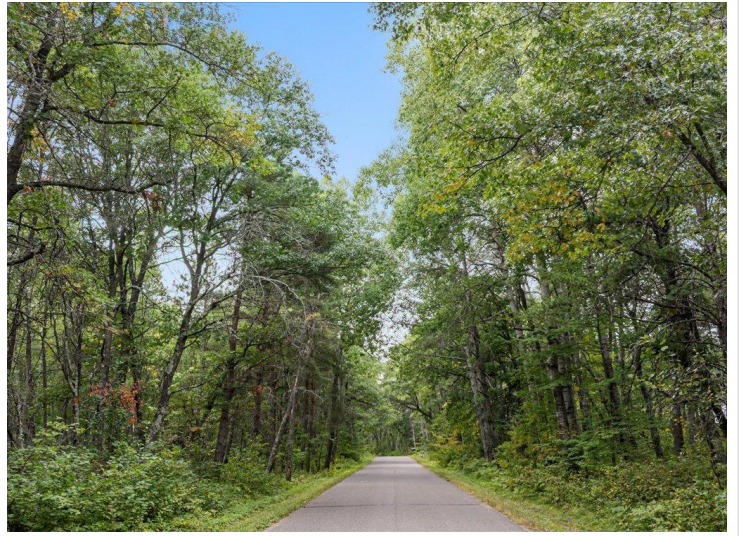
Affinity Real Estate - 600 Park Avenue South - Park Rapids MN 56470



website: www.AffinityRealEstate.com | email: info@affinityrealestate.com | office: 218-237-3333 | fax:218-237-3377



\$149,000
MLS 7063137 Land
Lot E Sandbar Lane
Merrifield MN 56465



website: www.AffinityRealEstate.com | email: info@affinityrealestate.com | office: 218-237-3333 | fax:218-237-3377



\$149,000
MLS 7063137 Land
Lot E Sandbar Lane
Merrifield MN 56465



website: www.AffinityRealEstate.com | email: info@affinityrealestate.com | office: 218-237-3333 | fax:218-237-3377



\$149,000
MLS 7063137 Land
Lot E Sandbar Lane
Merrifield MN 56465



website: www.AffinityRealEstate.com | email: info@affinityrealestate.com | office: 218-237-3333 | fax:218-237-3377



\$149,000
MLS 7063137 Land
Lot E Sandbar Lane
Merrifield MN 56465