



MLS 7063316 Residential

\$349,000

2,312 sq ft
4 bedrooms
2 baths

728 Woodland Drive
Fergus Falls MN 56537

Status: Active

Description:

Completely reimaged in timeless Craftsman style, this 4-bedroom, 2-bath home offers the feel of new construction in a private Woodland Heights setting. Situated on 1.44 acres on a quiet no-outlet road, the property features seasonal views of Opperman Lake along with frequent sightings of wild turkeys and whitetail deer.

The home has been extensively renovated and is virtually brand new inside featuring all new flooring, trim, interior and exterior doors, fixtures, and fresh paint, creating a cohesive and move-in ready space. The kitchen showcases granite countertops, all new appliances, with a brand new refrigerator on the way. Both bathrooms will be fully renovated with modern finishes.

Originally electric, the home has been converted to forced air natural gas and includes two gas fireplaces for added comfort. Additional improvements include doubled exterior walls and enhanced attic insulation for increased energy efficiency.

The main floor offers two bedrooms along with convenient laundry, while the lower level features a spacious family room, two additional bedrooms, and a 3/4 bath. A Kinetico water system is also in place.

A rare opportunity to own a thoughtfully updated home with space, privacy, and quality finishes in a desirable location.

Additional Details:

| | |
|------------------------|---------|
| Year Built | 1968 |
| Lot Acres | 1.445 |
| Lot Dimensions | 175x360 |
| Garage Stalls | 2 |
| School District | 544 |
| Taxes | \$2,608 |
| Taxes with Assessments | \$2,608 |
| Tax Year | 2025 |

Listed By: **RE/MAX** Natural Gas Garage: 2 Heat: Forced Air
 Affinity Real Estate Inc. participates in the Regional Multiple Listing Service of Minnesota, Inc Broker Reciprocity (sm) program, allowing us to display other broker's listings on our website. All properties are subject to prior sale, change of withdrawal.



Call Affinity Real Estate

218-237-3333

info@affinityrealestate.com



Affinity Real Estate - 600 Park Avenue South - Park Rapids MN 56470



website: www.AffinityRealEstate.com | email: info@affinityrealestate.com | office: 218-237-3333 | fax:218-237-3377



\$349,000
MLS 7063316 Residential
728 Woodland Drive
Fergus Falls MN 56537



website: www.AffinityRealEstate.com | email: info@affinityrealestate.com | office: 218-237-3333 | fax:218-237-3377



\$349,000
MLS 7063316 Residential
728 Woodland Drive
Fergus Falls MN 56537



website: www.AffinityRealEstate.com | email: info@affinityrealestate.com | office: 218-237-3333 | fax:218-237-3377



\$349,000
MLS 7063316 Residential
728 Woodland Drive
Fergus Falls MN 56537



website: www.AffinityRealEstate.com | email: info@affinityrealestate.com | office: 218-237-3333 | fax: 218-237-3377

Affinity
REAL ESTATE INC

\$349,000
MLS 7063316 Residential
728 Woodland Drive
Fergus Falls MN 56537



website: www.AffinityRealEstate.com | email: info@affinityrealestate.com | office: 218-237-3333 | fax: 218-237-3377



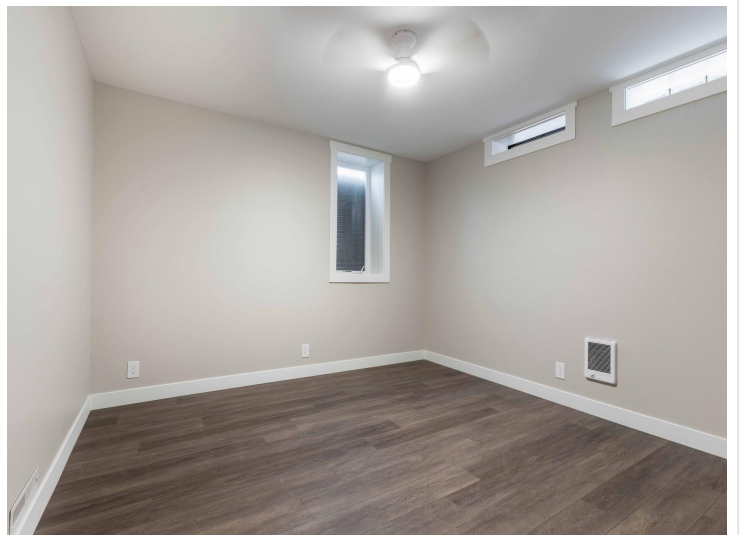
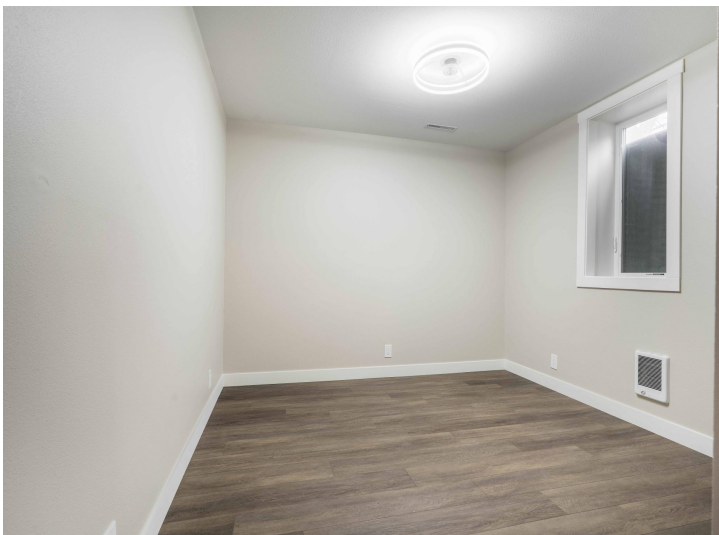
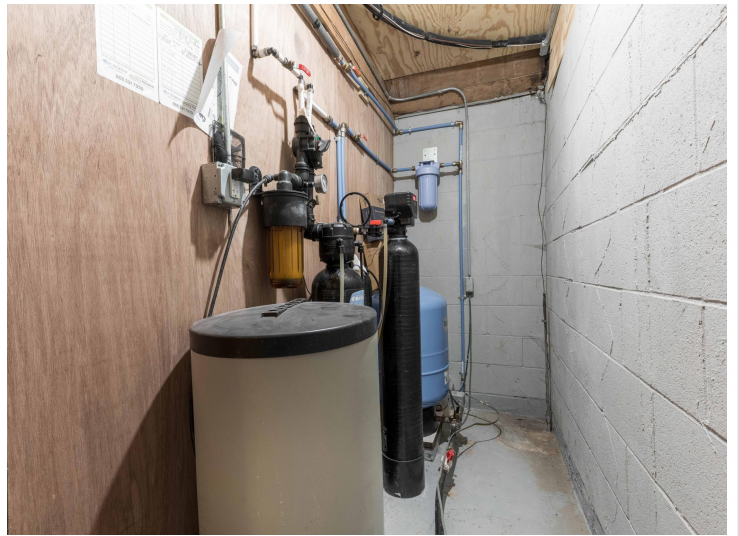
\$349,000
MLS 7063316 Residential
728 Woodland Drive
Fergus Falls MN 56537



website: www.AffinityRealEstate.com | email: info@affinityrealestate.com | office: 218-237-3333 | fax: 218-237-3377

Affinity
REAL ESTATE INC

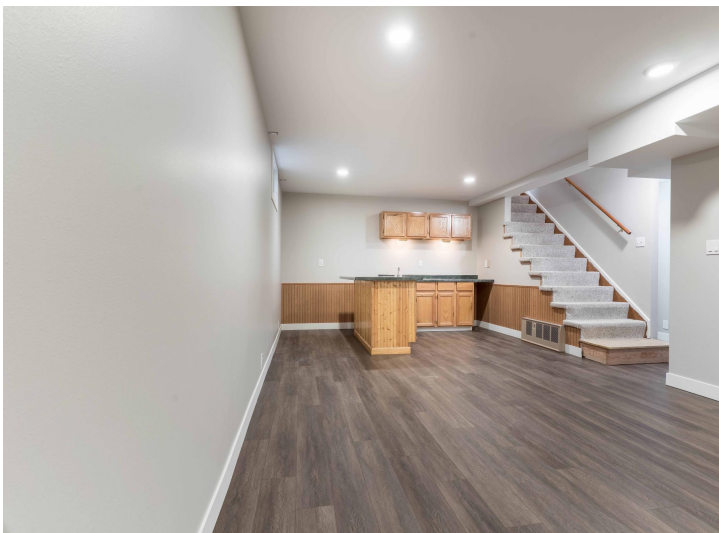
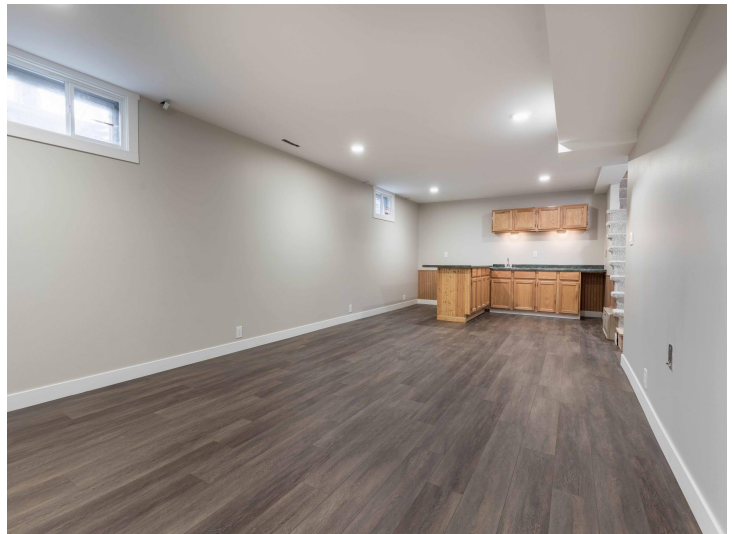
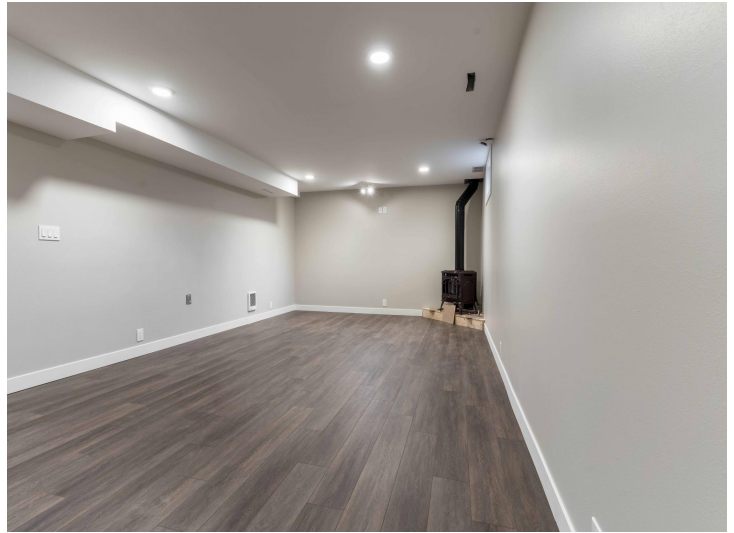
\$349,000
MLS 7063316 Residential
728 Woodland Drive
Fergus Falls MN 56537



website: www.AffinityRealEstate.com | email: info@affinityrealestate.com | office: 218-237-3333 | fax:218-237-3377



\$349,000
MLS 7063316 Residential
728 Woodland Drive
Fergus Falls MN 56537



website: www.AffinityRealEstate.com | email: info@affinityrealestate.com | office: 218-237-3333 | fax:218-237-3377



\$349,000
MLS 7063316 Residential
728 Woodland Drive
Fergus Falls MN 56537



website: www.AffinityRealEstate.com | email: info@affinityrealestate.com | office: 218-237-3333 | fax: 218-237-3377



\$349,000
MLS 7063316 Residential
728 Woodland Drive
Fergus Falls MN 56537



website: www.AffinityRealEstate.com | email: info@affinityrealestate.com | office: 218-237-3333 | fax:218-237-3377

Affinity
REAL ESTATE INC

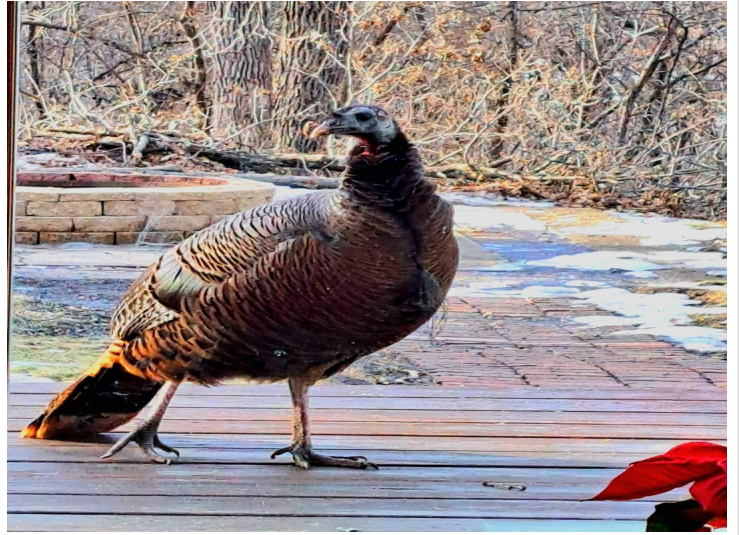
\$349,000
MLS 7063316 Residential
728 Woodland Drive
Fergus Falls MN 56537



website: www.AffinityRealEstate.com | email: info@affinityrealestate.com | office: 218-237-3333 | fax:218-237-3377



\$349,000
MLS 7063316 Residential
728 Woodland Drive
Fergus Falls MN 56537



website: www.AffinityRealEstate.com | email: info@affinityrealestate.com | office: 218-237-3333 | fax:218-237-3377



\$349,000
MLS 7063316 Residential
728 Woodland Drive
Fergus Falls MN 56537