



MLS 7063357 Residential

\$159,000

828 sq ft
2 bedrooms
1 baths

414 Scott Avenue
Bemidji MN 56601

Status: Active

Description:

Cute, affordable, and move-in ready 2 bedroom home in a convenient location on the south side of town! Steel siding and gas fireplace to keep you cozy. Detached 2 car garage. Schedule your showing today!

Additional Details:

Year Built	1940
Lot Acres	0.12
Lot Dimensions	40x140
Garage Stalls	2
School District	31
Taxes	\$1,216
Taxes with Assessments	\$1,216
Tax Year	2026

Additional Features:

Basement: None **Fuel:** Electric, Natural Gas **Garage:** 2 **Heat:** Baseboard **Sewer:** City Sewer/Connected **Water:** City Water/Connected **Air Conditioning:** Window Unit(s)

Driving Directions:

From downtown Bemidji, South on Paul Bunyan Dr to left (East) on 4th St. Continue for 4 blocks to right (South) on Scott Avenue, to #414 on left.



Listed By:
Century 21 Dickinson

Affinity Real Estate Inc. participates in the Regional Multiple Listing Service of Minnesota, Inc Broker Reciprocity (sm) program, allowing us to display other broker's listings on our website. All properties are subject to prior sale, change or withdrawal.



Call Affinity Real Estate

218-237-3333

info@affinityrealestate.com



Affinity Real Estate - 600 Park Avenue South - Park Rapids MN 56470



website: www.AffinityRealEstate.com | email: info@affinityrealestate.com | office: 218-237-3333 | fax:218-237-3377

Affinity
REAL ESTATE INC

\$159,000
MLS 7063357 Residential
414 Scott Avenue
Bemidji MN 56601



website: www.AffinityRealEstate.com | email: info@affinityrealestate.com | office: 218-237-3333 | fax: 218-237-3377

Affinity
REAL ESTATE INC

\$159,000
MLS 7063357 Residential
414 Scott Avenue
Bemidji MN 56601



website: www.AffinityRealEstate.com | email: info@affinityrealestate.com | office: 218-237-3333 | fax: 218-237-3377

Affinity
REAL ESTATE INC

\$159,000
MLS 7063357 Residential
414 Scott Avenue
Bemidji MN 56601



website: www.AffinityRealEstate.com | email: info@affinityrealestate.com | office: 218-237-3333 | fax:218-237-3377



\$159,000
MLS 7063357 Residential
414 Scott Avenue
Bemidji MN 56601



website: www.AffinityRealEstate.com | email: info@affinityrealestate.com | office: 218-237-3333 | fax:218-237-3377

Affinity
REAL ESTATE INC

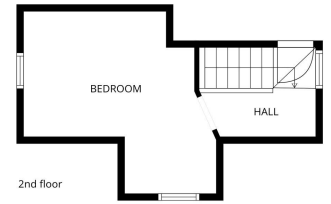
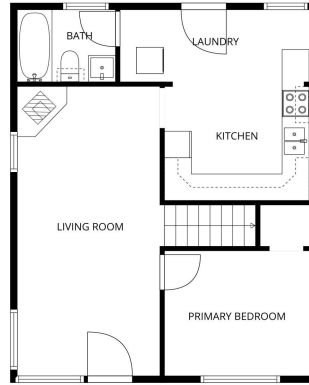
\$159,000
MLS 7063357 Residential
414 Scott Avenue
Bemidji MN 56601



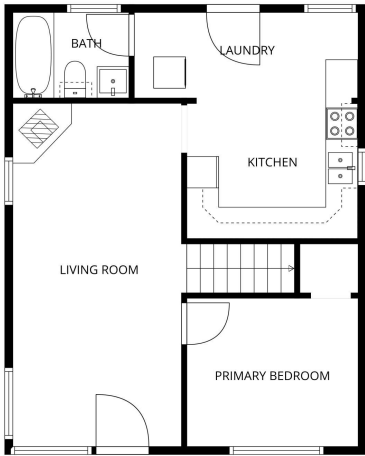
website: www.AffinityRealEstate.com | email: info@affinityrealestate.com | office: 218-237-3333 | fax:218-237-3377

Affinity
REAL ESTATE INC

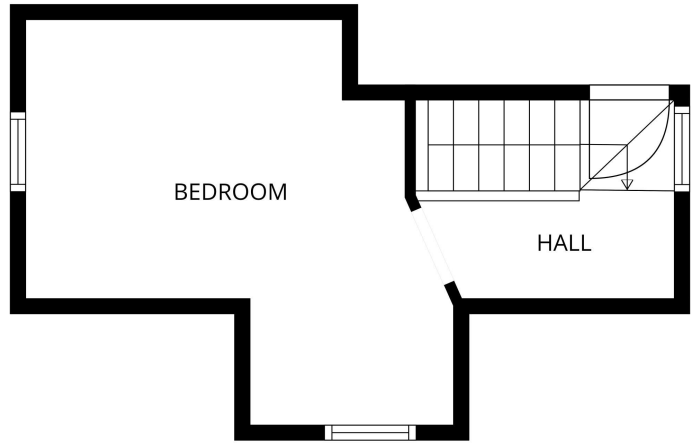
\$159,000
MLS 7063357 Residential
414 Scott Avenue
Bemidji MN 56601



FLOOR PLAN CREATED BY CUBICASA APP. MEASUREMENTS DEEMED HIGHLY RELIABLE BUT NOT GUARANTEED.



FLOOR PLAN CREATED BY CUBICASA APP. MEASUREMENTS DEEMED HIGHLY RELIABLE BUT NOT GUARANTEED.



FLOOR PLAN CREATED BY CUBICASA APP. MEASUREMENTS DEEMED HIGHLY RELIABLE BUT NOT GUARANTEED.

website: www.AffinityRealEstate.com | email: info@affinityrealestate.com | office: 218-237-3333 | fax: 218-237-3377



\$159,000
 MLS 7063357 Residential
 414 Scott Avenue
 Bemidji MN 56601