



MLS 7063358 Residential

**\$472,900**

2,571 sq ft  
4 bedrooms  
3 baths

8618 Sugarberry Creek  
Brainerd MN 56401

Status: Active

**Description:**

Prepare to be impressed by this stunning property, where style, meticulous attention to detail, and exceptional functionality come together seamlessly. This beautifully designed home offers four bedrooms and 3 full bathrooms, including three on the upper level—one featuring a spacious primary en-suite with a private bathroom. Offering 2,500+ finished square footage finished with every detail. The fully finished lower level is truly a standout, showcasing craftsmanship and design rarely seen, complete with a large, functional family room with gas fireplace and a finished laundry space that elevates everyday living. Professionally completed throughout with exceptional attention to detail—no element was overlooked. Versatile flex space in the 3-stall garage—perfect for a home office, warm storage, workout area, or hobby room, with the option to easily convert back into a third stall as needed. Ideally located just minutes from Brainerd and Baxter and the Paul Bunyan walking trail, this home perfectly blends comfort, convenience, and elevated design.

**Additional Details:**

Year Built	2020
Lot Acres	0.52
Lot Dimensions	127x180x177x80
Garage Stalls	3
School District	181
Taxes	\$3,355
Taxes with Assessments	\$3,380
Tax Year	2026

**Additional Features:**

**Basement:** Egress Window(s), Finished, Full, Sump Pump **Fuel:** Natural Gas **Garage:** 3 **Heat:** Forced Air **Sewer:** City Sewer/Connected  
**Water:** City Water/Connected **Air Conditioning:** Central Air

**Driving Directions:**

Take County Road 49/Wise Road, Right on Sugarberry, House on Left.



Listed By:  
Edina Realty, Inc.

Affinity Real Estate Inc. participates in the Regional Multiple Listing Service of Minnesota, Inc Broker Reciprocity (sm) program, allowing us to display other broker's listings on our website. All properties are subject to prior sale, change or withdrawal.



Call Affinity Real Estate

**218-237-3333**

[info@affinityrealestate.com](mailto:info@affinityrealestate.com)



Affinity Real Estate - 600 Park Avenue South - Park Rapids MN 56470



website: [www.AffinityRealEstate.com](http://www.AffinityRealEstate.com) | email: [info@affinityrealestate.com](mailto:info@affinityrealestate.com) | office: 218-237-3333 | fax:218-237-3377

**Affinity**  
REAL ESTATE INC

**\$472,900**  
MLS 7063358 Residential  
8618 Sugarberry Creek  
Brainerd MN 56401



website: [www.AffinityRealEstate.com](http://www.AffinityRealEstate.com) | email: [info@affinityrealestate.com](mailto:info@affinityrealestate.com) | office: 218-237-3333 | fax:218-237-3377

**Affinity**  
REAL ESTATE INC

**\$472,900**  
MLS 7063358 Residential  
8618 Sugarberry Creek  
Brainerd MN 56401



website: [www.AffinityRealEstate.com](http://www.AffinityRealEstate.com) | email: [info@affinityrealestate.com](mailto:info@affinityrealestate.com) | office: 218-237-3333 | fax: 218-237-3377

**Affinity**  
REAL ESTATE INC

**\$472,900**  
MLS 7063358 Residential  
8618 Sugarberry Creek  
Brainerd MN 56401



website: [www.AffinityRealEstate.com](http://www.AffinityRealEstate.com) | email: [info@affinityrealestate.com](mailto:info@affinityrealestate.com) | office: 218-237-3333 | fax: 218-237-3377

**Affinity**  
REAL ESTATE INC

**\$472,900**  
MLS 7063358 Residential  
8618 Sugarberry Creek  
Brainerd MN 56401



website: [www.AffinityRealEstate.com](http://www.AffinityRealEstate.com) | email: [info@affinityrealestate.com](mailto:info@affinityrealestate.com) | office: 218-237-3333 | fax:218-237-3377

**Affinity**  
REAL ESTATE INC

**\$472,900**  
MLS 7063358 Residential  
8618 Sugarberry Creek  
Brainerd MN 56401



website: [www.AffinityRealEstate.com](http://www.AffinityRealEstate.com) | email: [info@affinityrealestate.com](mailto:info@affinityrealestate.com) | office: 218-237-3333 | fax:218-237-3377

**Affinity**  
REAL ESTATE INC

**\$472,900**  
MLS 7063358 Residential  
8618 Sugarberry Creek  
Brainerd MN 56401



website: [www.AffinityRealEstate.com](http://www.AffinityRealEstate.com) | email: [info@affinityrealestate.com](mailto:info@affinityrealestate.com) | office: 218-237-3333 | fax:218-237-3377

**Affinity**  
REAL ESTATE INC

**\$472,900**  
MLS 7063358 Residential  
8618 Sugarberry Creek  
Brainerd MN 56401



website: [www.AffinityRealEstate.com](http://www.AffinityRealEstate.com) | email: [info@affinityrealestate.com](mailto:info@affinityrealestate.com) | office: 218-237-3333 | fax:218-237-3377

**Affinity**  
REAL ESTATE INC

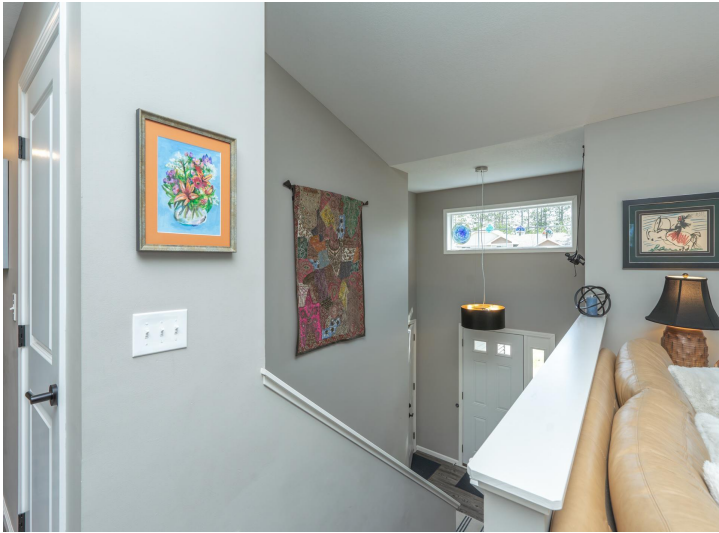
**\$472,900**  
MLS 7063358 Residential  
8618 Sugarberry Creek  
Brainerd MN 56401



website: [www.AffinityRealEstate.com](http://www.AffinityRealEstate.com) | email: [info@affinityrealestate.com](mailto:info@affinityrealestate.com) | office: 218-237-3333 | fax:218-237-3377

**Affinity**  
REAL ESTATE INC

**\$472,900**  
MLS 7063358 Residential  
8618 Sugarberry Creek  
Brainerd MN 56401



website: [www.AffinityRealEstate.com](http://www.AffinityRealEstate.com) | email: [info@affinityrealestate.com](mailto:info@affinityrealestate.com) | office: 218-237-3333 | fax:218-237-3377



**\$472,900**  
MLS 7063358 Residential  
8618 Sugarberry Creek  
Brainerd MN 56401



website: [www.AffinityRealEstate.com](http://www.AffinityRealEstate.com) | email: [info@affinityrealestate.com](mailto:info@affinityrealestate.com) | office: 218-237-3333 | fax: 218-237-3377

**Affinity**  
REAL ESTATE INC

**\$472,900**  
MLS 7063358 Residential  
8618 Sugarberry Creek  
Brainerd MN 56401



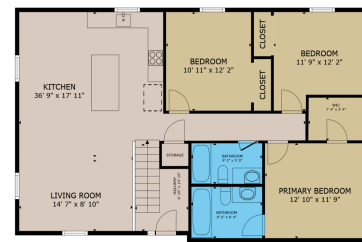
website: [www.AffinityRealEstate.com](http://www.AffinityRealEstate.com) | email: [info@affinityrealestate.com](mailto:info@affinityrealestate.com) | office: 218-237-3333 | fax:218-237-3377



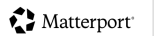
**\$472,900**  
MLS 7063358 Residential  
8618 Sugarberry Creek  
Brainerd MN 56401



GROSS INTERNAL AREA  
 FLOOR 1 1,371 sq.ft. FLOOR 2 1,219 sq.ft.  
 EXCLUDED AREAS : GARAGE 451 sq.ft.  
 TOTAL : 2,590 sq.ft.  
 SIZES AND DIMENSIONS ARE APPROXIMATE, ACTUAL MAY VARY.



GROSS INTERNAL AREA  
 FLOOR 1 1,371 sq.ft. FLOOR 2 1,219 sq.ft.  
 EXCLUDED AREAS : GARAGE 451 sq.ft.  
 TOTAL : 2,590 sq.ft.  
 SIZES AND DIMENSIONS ARE APPROXIMATE, ACTUAL MAY VARY.



website: [www.AffinityRealEstate.com](http://www.AffinityRealEstate.com) | email: [info@affinityrealestate.com](mailto:info@affinityrealestate.com) | office: 218-237-3333 | fax:218-237-3377



**\$472,900**  
 MLS 7063358 Residential  
 8618 Sugarberry Creek  
 Brainerd MN 56401