



MLS 7063403 Residential

\$624,900

2,944 sq ft
3 bedrooms
3 baths

8160 Golf View Trail
Pequot Lakes MN 56472

Status: Active

Description:

Immaculate home on the Whitefish Golf Course ready for the new owner! 3-bedroom 3-bathroom one level home with fully finished lower level. This custom-built home has gorgeous hardwood throughout- cabinets, flooring, trim. The welcoming open concept easily flows between living room, dining room, kitchen, and the spacious back deck; perfect for entertaining or family gatherings. The main floor primary bedroom en suite overlooks the golf course for serene views. The lower level is fully finished and equipped with your very own golf green for extra practice on rainy days! Few homes are as well built and show as well as this property. If you are looking for a quality home, with minimal maintenance, located on the golf course and close to a handful of the best lakes in the state this is the one for you!

Additional Details:

Year Built	2003
Lot Acres	0.48
Lot Dimensions	106x206x88x227
Garage Stalls	3
School District	186
Taxes	\$2,024
Taxes with Assessments	\$2,024
Tax Year	2025

Additional Features:

Basement: Daylight/Lookout Windows, Egress Window(s), Finished, Full, Storage Space **Fuel:** Natural Gas **Garage:** 3 **Heat:** Forced Air, Fireplace(s) **Sewer:** Septic System Compliant - Yes, Shared Septic **Water:** Shared System, Well **Air Conditioning:** Central Air

Driving Directions:

Hwy 371 North of Pequot Lakes to Co Rd 16 East 4.7 miles to Forest Knolls Rd to Golf View Trail



Listed By:
Northland Sotheby's International Realty

Affinity Real Estate Inc. participates in the Regional Multiple Listing Service of Minnesota, Inc Broker Reciprocity (sm) program, allowing us to display other broker's listings on our website. All properties are subject to prior sale, change or withdrawal.



Call Affinity Real Estate

218-237-3333

info@affinityrealestate.com



Affinity Real Estate - 600 Park Avenue South - Park Rapids MN 56470



website: www.AffinityRealEstate.com | email: info@affinityrealestate.com | office: 218-237-3333 | fax: 218-237-3377

Affinity
REAL ESTATE INC

\$624,900
MLS 7063403 Residential
8160 Golf View Trail
Pequot Lakes MN 56472



website: www.AffinityRealEstate.com | email: info@affinityrealestate.com | office: 218-237-3333 | fax: 218-237-3377

Affinity
REAL ESTATE INC

\$624,900
MLS 7063403 Residential
8160 Golf View Trail
Pequot Lakes MN 56472



website: www.AffinityRealEstate.com | email: info@affinityrealestate.com | office: 218-237-3333 | fax:218-237-3377

Affinity
REAL ESTATE INC

\$624,900
MLS 7063403 Residential
8160 Golf View Trail
Pequot Lakes MN 56472



website: www.AffinityRealEstate.com | email: info@affinityrealestate.com | office: 218-237-3333 | fax:218-237-3377

Affinity
REAL ESTATE INC

\$624,900
MLS 7063403 Residential
8160 Golf View Trail
Pequot Lakes MN 56472



website: www.AffinityRealEstate.com | email: info@affinityrealestate.com | office: 218-237-3333 | fax:218-237-3377



\$624,900
MLS 7063403 Residential
8160 Golf View Trail
Pequot Lakes MN 56472



website: www.AffinityRealEstate.com | email: info@affinityrealestate.com | office: 218-237-3333 | fax: 218-237-3377

Affinity
REAL ESTATE INC

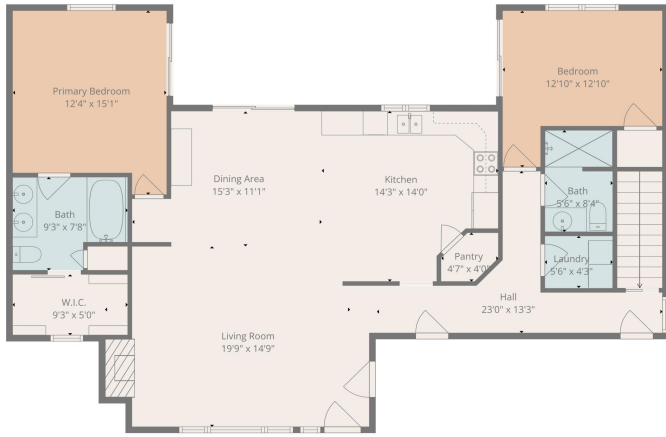
\$624,900
MLS 7063403 Residential
8160 Golf View Trail
Pequot Lakes MN 56472



website: www.AffinityRealEstate.com | email: info@affinityrealestate.com | office: 218-237-3333 | fax:218-237-3377

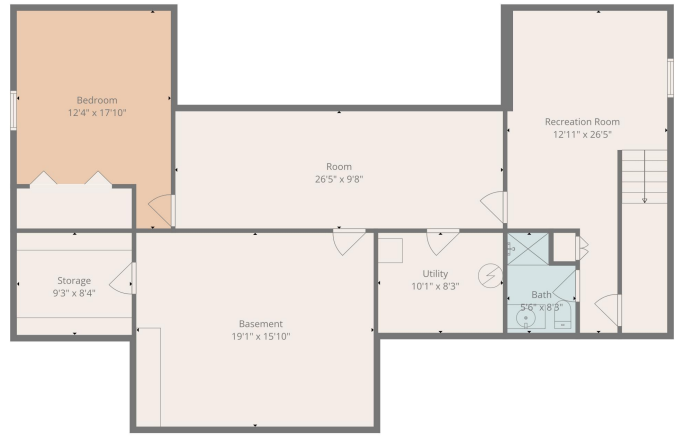
Affinity
REAL ESTATE INC

\$624,900
MLS 7063403 Residential
8160 Golf View Trail
Pequot Lakes MN 56472



TOTAL: 2159 sq. ft.
 Basement: 839 sq. ft., 1st floor: 1320 sq. ft.
 EXCLUDED AREAS: STORAGE: 81 sq. ft., UTILITY: 85 sq. ft., BASEMENT: 304 sq. ft.,
 WALLS: 193 sq. ft.

Floor Plan Created By Cadvision Inc. Measurements Determined By On-Site And Aerial Measurements.



TOTAL: 2159 sq. ft.
 Basement: 839 sq. ft., 1st floor: 1320 sq. ft.
 EXCLUDED AREAS: STORAGE: 81 sq. ft., UTILITY: 85 sq. ft., BASEMENT: 304 sq. ft.,
 WALLS: 193 sq. ft.

Floor Plan Created By Cadvision Inc. Measurements Determined By On-Site And Aerial Measurements.



website: www.AffinityRealEstate.com | email: info@affinityrealestate.com | office: 218-237-3333 | fax: 218-237-3377



\$624,900
 MLS 7063403 Residential
 8160 Golf View Trail
 Pequot Lakes MN 56472