



MLS 7063407 Residential

\$409,900

2,556 sq ft
3 bedrooms
3 baths

13109 Kingwood Drive
Baxter MN 56425

Status: Coming Soon

Description:

Meticulously maintained and move-in ready, this beautiful 3 bedroom, 3 bathroom home sits on a spacious corner lot in one of Baxter's most desirable locations. From the moment you arrive, you'll appreciate the pride of ownership throughout, with thoughtful updates and well-kept spaces both inside and out. The home offers a functional and inviting layout with comfortable living areas, ideal for both everyday living and entertaining. The kitchen and dining spaces flow seamlessly, while large windows bring in plenty of natural light, creating a warm and welcoming atmosphere. Step outside and enjoy the lovely backyard, complete with a patio, deck, and a charming 3-season porch—perfect for relaxing, hosting gatherings, or taking in Minnesota's beautiful seasons. The outdoor space provides both privacy and room to play, garden, or unwind. Additional features include a convenient 2-stall attached garage, a pull-through driveway for easy access and extra parking, and a storage shed for all your tools and outdoor equipment. Every detail has been cared for, making this home truly move-in ready. You'll be just minutes from schools, parks, trails, shopping, dining, and everything the area has to offer. Whether you're looking for comfort, convenience, or space to grow, this property checks all the boxes. Don't miss your chance to own this well-maintained home in a prime location—schedule your showing today!

Additional Details:

Year Built	1989
Lot Acres	0.86
Lot Dimensions	249.48x164.62x255x133.59
Garage Stalls	2
School District	181
Taxes	\$3,730
Taxes with Assessments	\$3,730
Tax Year	2025

Additional Features:

Basement: Block **Fuel:** Natural Gas **Garage:** 2 **Heat:** Forced Air **Sewer:** City Sewer/Connected **Water:** City Water/Connected **Air Conditioning:**

Listed By:
Edina Realty, Inc.

Edina Realty, Inc. is a member of the Equal Housing Opportunity Service of Minnesota, Inc Broker Reciprocity (sm) program, allowing us to display other broker's listings on our website. All properties are subject to prior sale, change or withdrawal.



Call Affinity Real Estate
218-237-3333
info@affinityrealestate.com



Affinity Real Estate - 600 Park Avenue South - Park Rapids MN 56470



website: www.AffinityRealEstate.com | email: info@affinityrealestate.com | office: 218-237-3333 | fax: 218-237-3377

Affinity
REAL ESTATE INC

\$409,900
MLS 7063407 Residential
13109 Kingwood Drive
Baxter MN 56425



website: www.AffinityRealEstate.com | email: info@affinityrealestate.com | office: 218-237-3333 | fax:218-237-3377

Affinity
REAL ESTATE INC

\$409,900
MLS 7063407 Residential
13109 Kingwood Drive
Baxter MN 56425



website: www.AffinityRealEstate.com | email: info@affinityrealestate.com | office: 218-237-3333 | fax: 218-237-3377

Affinity
REAL ESTATE INC

\$409,900
MLS 7063407 Residential
13109 Kingwood Drive
Baxter MN 56425



website: www.AffinityRealEstate.com | email: info@affinityrealestate.com | office: 218-237-3333 | fax:218-237-3377

Affinity
REAL ESTATE INC

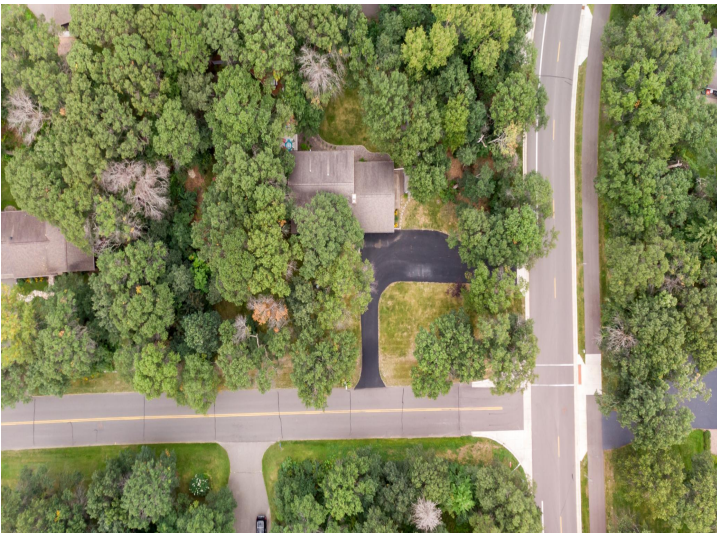
\$409,900
MLS 7063407 Residential
13109 Kingwood Drive
Baxter MN 56425



website: www.AffinityRealEstate.com | email: info@affinityrealestate.com | office: 218-237-3333 | fax:218-237-3377



\$409,900
MLS 7063407 Residential
13109 Kingwood Drive
Baxter MN 56425



website: www.AffinityRealEstate.com | email: info@affinityrealestate.com | office: 218-237-3333 | fax:218-237-3377



\$409,900
MLS 7063407 Residential
13109 Kingwood Drive
Baxter MN 56425