



MLS 7063503 Residential

**\$699,600**

1,806 sq ft  
3 bedrooms  
2 baths

TBD Wilderness Parkway  
Crosslake MN 56442

Status: Active

**Description:**

Welcome to your dream up-north retreat in Crosslake, set on a beautiful 1.18-acre wooded lot that offers both privacy and convenience. This thoughtfully designed home features a spacious open layout with a large kitchen complete with alder cabinetry, quartz countertops, stainless steel appliances, a large pantry, and plenty of prep and storage space—perfect for entertaining or everyday living. The home’s curb appeal stands out with LP SmartSide siding and cedar accents, blending modern durability with classic Northwoods charm. Inside, the great room showcases a stunning stone gas fireplace, vaulted ceilings, and wood beams that bring warmth and character to the space.

The primary suite offers a generous layout with a walk-in closet and a luxurious ensuite bathroom featuring a walk-in tile shower and soaking tub. Two additional bedrooms and a well-appointed second bathroom provide comfortable space for family or guests. The oversized 4-car insulated garage with 8' doors offers abundant room for vehicles, tools, and all your up-north toys. Located just a short walk to the Crosslake Parks & Recreation Area—featuring pickleball, tennis, basketball, baseball fields, bags, and a playground—and only 5 minutes from the heart of Crosslake with shopping and restaurants. Modern comfort, Northwoods charm, and an unbeatable location—your Crosslake dream home awaits.

**Additional Details:**

Year Built	2026
Lot Acres	1.18
Lot Dimensions	281-117-392-186
Garage Stalls	4
School District	186
Taxes	\$94
Taxes with Assessments	\$34
Tax Year	2025

**Additional Features:**

**Fuel:** Propane **Heat:** Ductless Mini-Split, Fireplace(s), Hot Water, In-Floor Heating

**Driving Directions:**

From the intersection of County Rd 3 & County Rd 66 in Crosslake, take County Rd 66 for 1.9 miles. Turn right onto Daggett Pine Rd and go 1.1 miles, turn left onto Wilderness Trl. Go for 0.4 miles, and turn right onto Daggett Pine Trail. Lot 5 E Wilderness Parkway.



Counselor Realty Brainerd Lakes

Affinity Real Estate Inc. participates in the Regional Multiple Listing Service of Minnesota, Inc Broker Reciprocity (sm) program, allowing us to display other broker’s listings on our website. All properties are subject to prior sale, change or withdrawal.



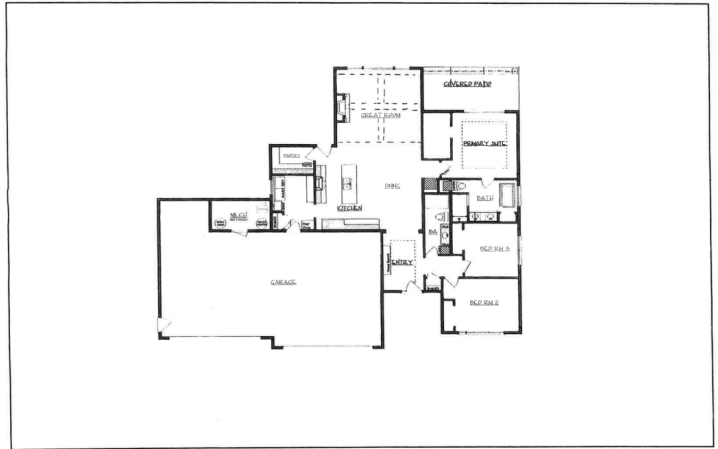
Call Affinity Real Estate

**218-237-3333**

[info@affinityrealestate.com](mailto:info@affinityrealestate.com)



Affinity Real Estate - 600 Park Avenue South - Park Rapids MN 56470



website: [www.AffinityRealEstate.com](http://www.AffinityRealEstate.com) | email: [info@affinityrealestate.com](mailto:info@affinityrealestate.com) | office: 218-237-3333 | fax: 218-237-3377



**\$699,600**  
MLS 7063503 Residential  
TBD Wilderness Parkway  
Crosslake MN 56442



website: [www.AffinityRealEstate.com](http://www.AffinityRealEstate.com) | email: [info@affinityrealestate.com](mailto:info@affinityrealestate.com) | office: 218-237-3333 | fax:218-237-3377



**\$699,600**  
MLS 7063503 Residential  
TBD Wilderness Parkway  
Crosslake MN 56442



website: [www.AffinityRealEstate.com](http://www.AffinityRealEstate.com) | email: [info@affinityrealestate.com](mailto:info@affinityrealestate.com) | office: 218-237-3333 | fax:218-237-3377



**\$699,600**  
MLS 7063503 Residential  
TBD Wilderness Parkway  
Crosslake MN 56442