



MLS 7063635 Residential

\$650,000

3,578 sq ft
4 bedrooms
3 baths

23600 335th Avenue
Swanville MN 56382

Status: Active

Description:

Secluded Acreage Dream!! Nearly 30 Acres of pure privacy. Opportunities like this do not come around often. Tucked away on nearly 30 acres, this one-owner, never-before listed property offers a level of privacy and peace that's hard to find. No neighbors in sight, just nature in every direction. This spacious 4 bedroom, 3 bath home was designed for comfort & convenience with 3 beds & 2 baths on the main level including the primary suite & laundry. The layout flows beautifully into open living spaces. Downstairs, the home truly wows with a walkout lower level featuring expansive living space, abundant storage, and a dedicated wet bar area, making it ideal for hosting, relaxing or creating the ultimate recreation space. Step outside onto the wrap-around deck and porch area to take in the peaceful, private setting. The asphalt driveway adds to the home's strong curb appeal. Bring your hobbies, toys, and big ideas, there's room for it all with TWO 50x30 sheds and a 30x38 Detached Garage . Fiber Optic Internet on site. Tons of storage options throughout this property. Pride of ownership shines throughout, now ready for the next owner to love it as much as the current ones! This is the perfect blend of privacy, space and modern convenience, truly a RARE find. Schedule your private showing today, this one is a must-see in person!

Additional Details:

Year Built	2001
Lot Acres	29.7
Lot Dimensions	1125x1150
Garage Stalls	4
School District	486
Taxes	\$7,834
Taxes with Assessments	\$7,834
Tax Year	2026

Additional Features:

Basement: Block, Finished, Full, Storage Space, Walkout **Fuel:** Electric, Other **Garage:** 4 **Heat:** Baseboard, Dual Fuel/Off Peak, Forced Air **Sewer:** Septic System Compliant - Yes **Water:** Drilled, Well **Air Conditioning:** Central Air

Driving Directions:

From STATE 27 take 335th Ave, property on the left.



Listed By:
MOVE IT REAL ESTATE
GROUP/LAKEHOMES.COM
Affinity Real Estate Inc. participates in the Regional Multiple Listing Service of Minnesota, Inc Broker Reciprocity (sm) program, allowing us to display other broker's listings on our website. All properties are subject to prior sale, change or withdrawal.



Call Affinity Real Estate
218-237-3333
info@affinityrealestate.com



Affinity Real Estate - 600 Park Avenue South - Park Rapids MN 56470



website: www.AffinityRealEstate.com | email: info@affinityrealestate.com | office: 218-237-3333 | fax:218-237-3377



\$650,000
MLS 7063635 Residential
23600 335th Avenue
Swanville MN 56382



website: www.AffinityRealEstate.com | email: info@affinityrealestate.com | office: 218-237-3333 | fax:218-237-3377



\$650,000
MLS 7063635 Residential
23600 335th Avenue
Swanville MN 56382



website: www.AffinityRealEstate.com | email: info@affinityrealestate.com | office: 218-237-3333 | fax:218-237-3377

Affinity
REAL ESTATE INC

\$650,000
MLS 7063635 Residential
23600 335th Avenue
Swanville MN 56382



website: www.AffinityRealEstate.com | email: info@affinityrealestate.com | office: 218-237-3333 | fax: 218-237-3377

Affinity
REAL ESTATE INC

\$650,000
MLS 7063635 Residential
23600 335th Avenue
Swanville MN 56382



website: www.AffinityRealEstate.com | email: info@affinityrealestate.com | office: 218-237-3333 | fax:218-237-3377

Affinity
REAL ESTATE INC

\$650,000
MLS 7063635 Residential
23600 335th Avenue
Swanville MN 56382



website: www.AffinityRealEstate.com | email: info@affinityrealestate.com | office: 218-237-3333 | fax:218-237-3377

Affinity
REAL ESTATE INC

\$650,000
MLS 7063635 Residential
23600 335th Avenue
Swanville MN 56382



website: www.AffinityRealEstate.com | email: info@affinityrealestate.com | office: 218-237-3333 | fax:218-237-3377

Affinity
REAL ESTATE INC

\$650,000
MLS 7063635 Residential
23600 335th Avenue
Swanville MN 56382



website: www.AffinityRealEstate.com | email: info@affinityrealestate.com | office: 218-237-3333 | fax:218-237-3377

Affinity
REAL ESTATE INC

\$650,000
MLS 7063635 Residential
23600 335th Avenue
Swanville MN 56382



website: www.AffinityRealEstate.com | email: info@affinityrealestate.com | office: 218-237-3333 | fax:218-237-3377

Affinity
REAL ESTATE INC

\$650,000
MLS 7063635 Residential
23600 335th Avenue
Swanville MN 56382



website: www.AffinityRealEstate.com | email: info@affinityrealestate.com | office: 218-237-3333 | fax:218-237-3377

Affinity
REAL ESTATE INC

\$650,000
MLS 7063635 Residential
23600 335th Avenue
Swanville MN 56382



website: www.AffinityRealEstate.com | email: info@affinityrealestate.com | office: 218-237-3333 | fax: 218-237-3377

Affinity
REAL ESTATE INC

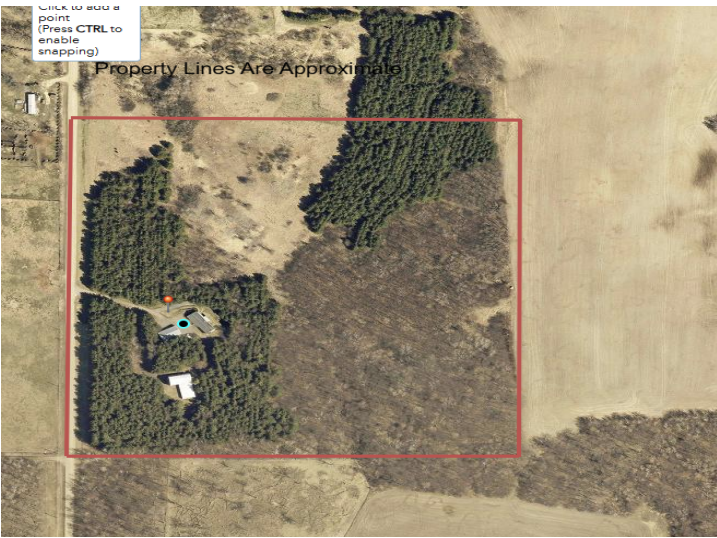
\$650,000
MLS 7063635 Residential
23600 335th Avenue
Swanville MN 56382



website: www.AffinityRealEstate.com | email: info@affinityrealestate.com | office: 218-237-3333 | fax:218-237-3377



\$650,000
MLS 7063635 Residential
23600 335th Avenue
Swanville MN 56382



website: www.AffinityRealEstate.com | email: info@affinityrealestate.com | office: 218-237-3333 | fax:218-237-3377



\$650,000
MLS 7063635 Residential
23600 335th Avenue
Swanville MN 56382