

MLS 7063671 Land

\$40,000

1.219 Acres
Raw Land

TBD Telemark Trail
Cushing MN 56443

Status: Active

Description:

(description unavailable)

Additional Details:

Lot Acres	1.219
Lot Dimensions	132x260x149x363x104
School District	2170
Taxes	\$374
Taxes with Assessments	\$374
Tax Year	2025

Additional Features:

Driving Directions:

From Ten Exit on to county road 3, travel down 3 for 2.8 Miles, take a left on to Telemark Trail, the property will be 200 feet down on your right



Listed By:
Edina Realty, Inc.

Affinity Real Estate Inc. participates in the Regional Multiple Listing Service of Minnesota, Inc Broker Reciprocity (sm) program, allowing us to display other broker's listings on our website. All properties are subject to prior sale, change or withdrawal.



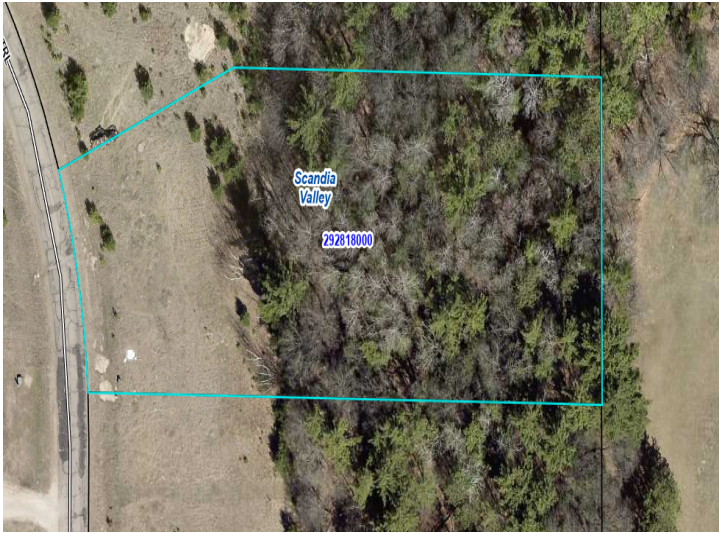
Call Affinity Real Estate

218-237-3333

info@affinityrealestate.com



Affinity Real Estate - 600 Park Avenue South - Park Rapids MN 56470



website: www.AffinityRealEstate.com | email: info@affinityrealestate.com | office: 218-237-3333 | fax:218-237-3377



\$40,000
MLS 7063671 Land
TBD Telemark Trail
Cushing MN 56443