



MLS 7063701 Lake Home

**\$289,000**

1,300 sq ft  
3 bedrooms  
2 baths

1707 Crosby Court  
Bemidji MN 56601

Waterfront: Andrusia

Status: Active

**Description:**

Easy year round lake living on the Cass Chain of Lakes! This large modern double wide is in excellent move in condition. Crosby Court is your affordable gateway to Andrusia and the more than 27,000 acre Cass Lake Chain. Accessible swimming beach - great sand, marina slip, fish cleaning house, workshop and community room! Unit has oversized single car garage and raised garden beds. Ramp and wide hallways and no interior steps makes an easily accessible unit. Private back lot is desirable and quiet.

**Additional Details:**

Year Built	2015
Lot Acres	0.29
Lot Dimensions	140'x90'
Garage Stalls	1
School District	31
Taxes	\$191
Taxes with Assessments	\$191
Tax Year	2026

**Additional Features:**

**Basement:** None **Fuel:** Propane **Garage:** 1 **Heat:** Forced Air **Sewer:** Private Sewer, Septic System Compliant - Yes, Shared Septic **Water:** Drilled, Private, Shared System **Air Conditioning:** Central Air

**Driving Directions:**

East on Roosevelt Rd, East on Finn n Feather Blvd, North on Joe's Lodge Dr, West on Crosby Ct.



Listed By:  
Century 21 Dickinson

Affinity Real Estate Inc. participates in the Regional Multiple Listing Service of Minnesota, Inc Broker Reciprocity (sm) program, allowing us to display other broker's listings on our website. All properties are subject to prior sale, change or withdrawal.



**Call Affinity Real Estate**

**218-237-3333**

**info@affinityrealestate.com**



**Affinity Real Estate - 600 Park Avenue South - Park Rapids MN 56470**



website: [www.AffinityRealEstate.com](http://www.AffinityRealEstate.com) | email: [info@affinityrealestate.com](mailto:info@affinityrealestate.com) | office: 218-237-3333 | fax: 218-237-3377

**Affinity**  
REAL ESTATE INC

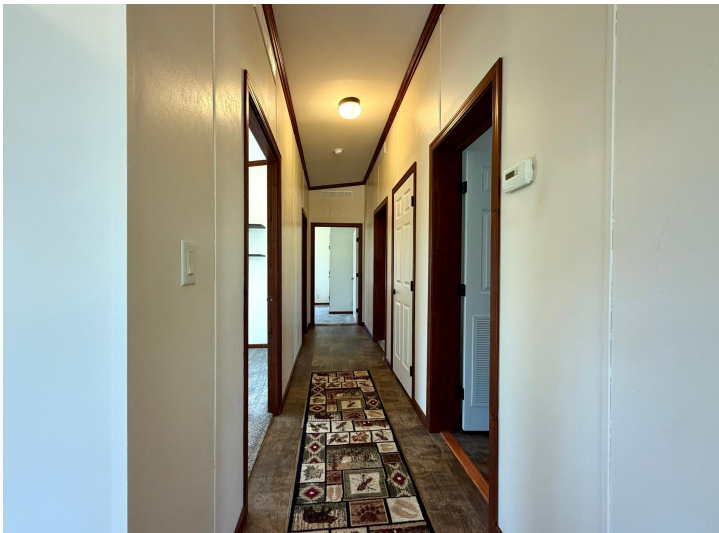
**\$289,000**  
MLS 7063701 Lake Home  
1707 Crosby Court  
Bemidji MN 56601



website: [www.AffinityRealEstate.com](http://www.AffinityRealEstate.com) | email: [info@affinityrealestate.com](mailto:info@affinityrealestate.com) | office: 218-237-3333 | fax:218-237-3377

**Affinity**  
REAL ESTATE INC

**\$289,000**  
MLS 7063701 Lake Home  
1707 Crosby Court  
Bemidji MN 56601



website: [www.AffinityRealEstate.com](http://www.AffinityRealEstate.com) | email: [info@affinityrealestate.com](mailto:info@affinityrealestate.com) | office: 218-237-3333 | fax: 218-237-3377

**Affinity**  
REAL ESTATE INC

**\$289,000**  
MLS 7063701 Lake Home  
1707 Crosby Court  
Bemidji MN 56601



website: [www.AffinityRealEstate.com](http://www.AffinityRealEstate.com) | email: [info@affinityrealestate.com](mailto:info@affinityrealestate.com) | office: 218-237-3333 | fax:218-237-3377



**\$289,000**  
MLS 7063701 Lake Home  
1707 Crosby Court  
Bemidji MN 56601



website: [www.AffinityRealEstate.com](http://www.AffinityRealEstate.com) | email: [info@affinityrealestate.com](mailto:info@affinityrealestate.com) | office: 218-237-3333 | fax:218-237-3377



**\$289,000**  
MLS 7063701 Lake Home  
1707 Crosby Court  
Bemidji MN 56601