



MLS 7063800 Land

\$44,900

2.27 Acres
Raw Land

2.27 AC Gary Drive
Park Rapids MN 56470

Status: Active

Description:

Nestled among mature trees, this 2.27 acre building lot offers the natural setting that is increasingly hard to find. A great location just North of Dorset for dining and shopping. Also located close to trails for biking or snowmobiling.

Additional Details:

Lot Acres	2.27
Lot Dimensions	470x161x402x245
School District	309
Taxes	\$178
Taxes with Assessments	\$178
Tax Year	2026

Additional Features:

Driving Directions:

From Hwys 71/34 in Park Rapids. East on Hwy 34. Left on 226 (becomes #7). Follow to a left onto Gary Drive. The lot is between #7 and Gary Drive.



Listed By:
Coldwell Banker Crown Realtors

Affinity Real Estate Inc. participates in the Regional Multiple Listing Service of Minnesota, Inc Broker Reciprocity (sm) program, allowing us to display other broker's listings on our website. All properties are subject to prior sale, change or withdrawal.



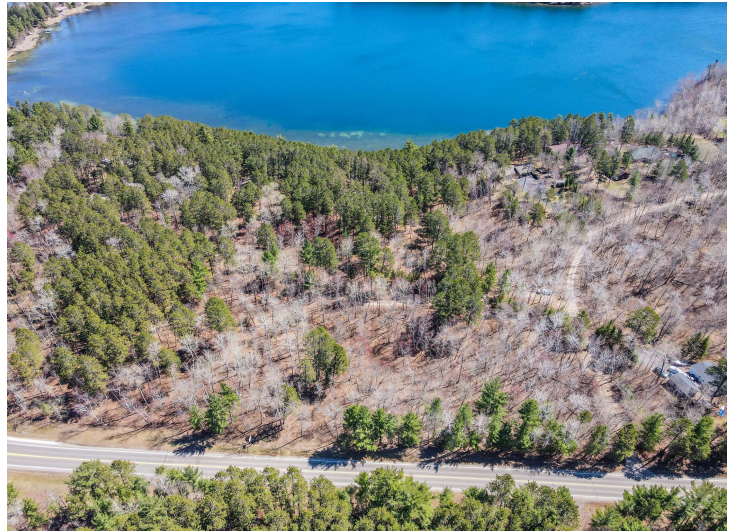
Call Affinity Real Estate

218-237-3333

info@affinityrealestate.com



Affinity Real Estate - 600 Park Avenue South - Park Rapids MN 56470



website: www.AffinityRealEstate.com | email: info@affinityrealestate.com | office: 218-237-3333 | fax:218-237-3377



\$44,900
MLS 7063800 Land
2.27 AC Gary Drive
Park Rapids MN 56470