



MLS 7064002 Residential

**\$274,900**

1,192 sq ft  
3 bedrooms  
2 baths

16848 Grove Street  
Little Falls MN 56345

Status: Active

**Description:**

This lovely 3 bedroom/2 bathroom three-level split home is located in a highly sought-after neighborhood less than a block from the soccer fields and baseball complex! Enjoy the convenience of being just a short drive, bike ride, or walk to Taylor Twitchell Park and the new splash pad expected to open soon. The Mississippi River is also nearby, offering even more opportunities for outdoor recreation.

Inside, the beautiful dining room features vaulted ceilings and an abundance of natural light, creating a warm and inviting atmosphere. The oversized 2 stall attached garage provides abundant storage, while the spacious backyard includes an additional garage - perfect for extra storage, hobbies, or all of your outdoor toys. Enjoy spending summer evenings entertaining on the deck and patio areas while relaxing in the peaceful and private setting.

Come take a look today!

**Additional Details:**


Year Built	1993
Lot Acres	0.39
Lot Dimensions	100x170
Garage Stalls	3
School District	482
Taxes	\$2,578
Taxes with Assessments	\$2,578
Tax Year	2026

**Additional Features:**

**Basement:** Wood **Fuel:** Electric **Garage:** 3 **Heat:** Baseboard **Sewer:** City Sewer - In Street, Private Sewer **Water:** City Water - In Street, Well **Air Conditioning:** Window Unit(s)

**Driving Directions:**

From Haven Road go North to Pine Ave on left. Turn right on Grove Street. The property is the second home on the right.

 Listed By:  
Central MN Realty LLC

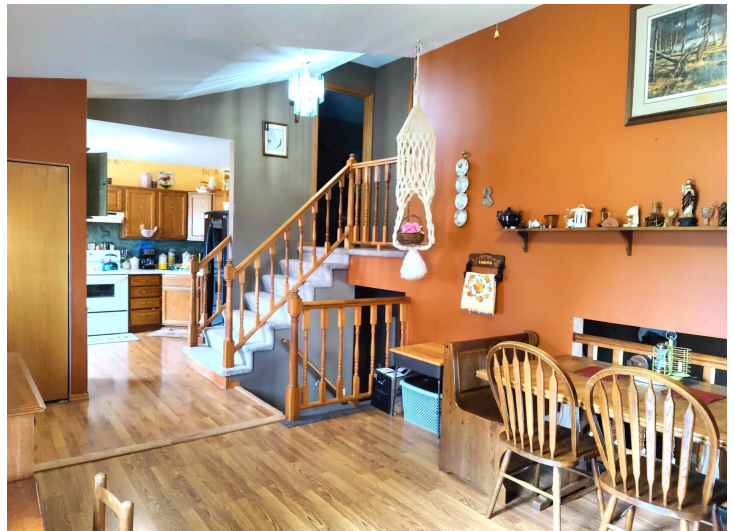
Affinity Real Estate Inc. participates in the Regional Multiple Listing Service of Minnesota, Inc Broker Reciprocity (sm) program, allowing us to display other broker's listings on our website. All properties are subject to prior sale, change or withdrawal.



**Call Affinity Real Estate**  
**218-237-3333**  
**info@affinityrealestate.com**



**Affinity Real Estate - 600 Park Avenue South - Park Rapids MN 56470**



website: [www.AffinityRealEstate.com](http://www.AffinityRealEstate.com) | email: [info@affinityrealestate.com](mailto:info@affinityrealestate.com) | office: 218-237-3333 | fax: 218-237-3377

**Affinity**  
REAL ESTATE INC

**\$274,900**  
MLS 7064002 Residential  
16848 Grove Street  
Little Falls MN 56345



website: [www.AffinityRealEstate.com](http://www.AffinityRealEstate.com) | email: [info@affinityrealestate.com](mailto:info@affinityrealestate.com) | office: 218-237-3333 | fax:218-237-3377

**Affinity**  
REAL ESTATE INC

**\$274,900**  
MLS 7064002 Residential  
16848 Grove Street  
Little Falls MN 56345



website: [www.AffinityRealEstate.com](http://www.AffinityRealEstate.com) | email: [info@affinityrealestate.com](mailto:info@affinityrealestate.com) | office: 218-237-3333 | fax: 218-237-3377

**Affinity**  
REAL ESTATE INC

**\$274,900**  
MLS 7064002 Residential  
16848 Grove Street  
Little Falls MN 56345



website: [www.AffinityRealEstate.com](http://www.AffinityRealEstate.com) | email: [info@affinityrealestate.com](mailto:info@affinityrealestate.com) | office: 218-237-3333 | fax:218-237-3377



**\$274,900**  
MLS 7064002 Residential  
16848 Grove Street  
Little Falls MN 56345